



Connells

Aneurin Bevan Place
Rugeley



Property Description

Offered to the market with no onward chain, this well-presented three-bedroom end-of-terrace family home is ideally situated in a popular residential location, close to local schools, shops, and amenities.

The property features a spacious lounge/dining room, providing an excellent space for both everyday living and entertaining. The accommodation also includes a fitted kitchen and a family bathroom.

Outside, the home benefits from both front and rear gardens, offering plenty of outdoor space for families to enjoy. To the rear, there is off-road parking and a large storage area, providing added convenience and practicality.

This property is perfectly suited to first-time buyers, young families, or investors looking for a home in a sought-after location with excellent local facilities nearby.

Early viewing is highly recommended.



Entrance Hall

Lounge/Diner

20' 4" x 10' 8" (6.20m x 3.25m)

Kitchen

13' 3" x 8' 2" (4.04m x 2.49m)

Outside Storage Room

First Floor Landing

Bedroom One

11' 5" x 10' 8" (3.48m x 3.25m)

Bedroom Two

9' 9" x 8' 4" (2.97m x 2.54m)

Bedroom Three

9' 4" x 8' 8" (2.84m x 2.64m)

Bathroom

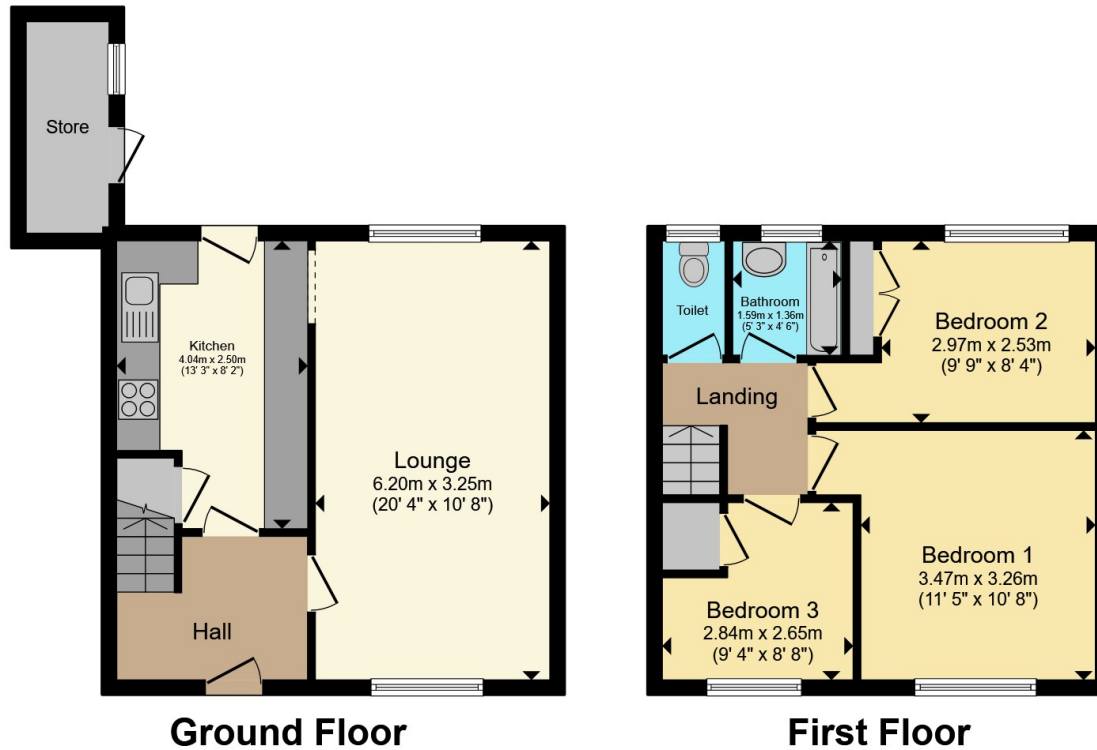
Separate W/C

Front And Rear Garden









Total floor area 76.7 m² (826 sq.ft.) approx

This floor plan is for illustrative purposes only. It is not drawn to scale. Any measurements, floor areas (including any total floor area), openings and orientation are approximate. No details are guaranteed, they cannot be relied upon for any purpose and they do not form part of any agreement. No liability is taken for any error, omission or misstatement. A party must rely upon its own inspection(s). Powered by www.propertybox.io



To view this property please contact Connells on

T 01543 262 376
E lichfield@connells.co.uk

11-13 Bore Street
 LICHFIELD WS13 6LZ

EPC Rating: Council Tax
 Awaited Band: A

Tenure: Freehold

view this property online connells.co.uk/Property/LFD312268



1. MONEY LAUNDERING REGULATIONS Intending purchasers will be asked to produce identification documentation at a later stage and we would ask for your co-operation in order that there will be no delay in agreeing the sale. 2. These particulars do not constitute part or all of an offer or contract. 3. The measurements indicated are supplied for guidance only and as such must be considered incorrect. Potential buyers are advised to recheck measurements before committing to any expense. 4. We have not tested any apparatus, equipment, fixtures, fittings or services and it is in the buyers interest to check the working condition of any appliances.

Connells Residential is registered in England and Wales under company number 1489613, Registered Office is Cumbria House, 16-20 Hockliffe Street, Leighton Buzzard, Bedfordshire, LU7 1GN. VAT Registration Number is 500 2481 05.

See all our properties at www.connells.co.uk | www.rightmove.co.uk | www.zoopla.co.uk

Property Ref: LFD312268 - 0002