

for sale

£500,000



## Mountbatten Park, Hoe Lane, North Baddesley, Southampton, SO52 9NH

HOME 38 A Stylish detached home with Cottage design appeal, open-plan kitchen/diner with French doors onto a private rear garden. Principle bedroom with en-suite, Single garage and EV charging and premium energy-efficient specification.

# Mountbatten Park, Hoe Lane, North Baddesley, Southampton, SO52 9NH

## Kitchen

- o Stone worktops with matching upstands
- o Soft-close cupboards and drawers
- o Stainless steel undermount sink with chrome mixer tap
- o Integrated fridge/freezer and dishwasher
- o Single fan-assisted oven, induction hob with extractor

## Bathrooms & En-Suite

- o Contemporary white sanitaryware with chrome fittings
- o Porcelanosa wall tiling
- o Dual fuel heated towel rails
- o Shaver points

## Interior Finishes

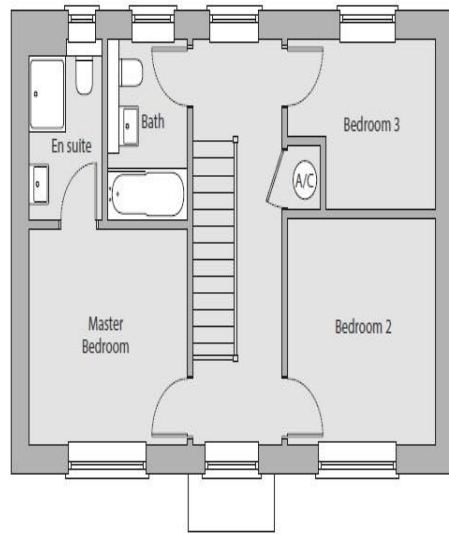
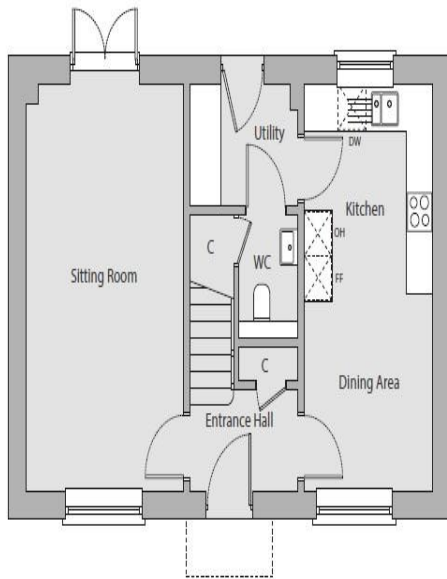
- o Oak handrails and newel posts with hand-painted spindles
- o USB charging points to kitchen and bedrooms
- o TV points to living room and principal bedroom

## Heating & Energy

- o Air source heat pump
- o Underfloor heating to ground floor
- o STELRAD radiators to first floor
- o Room thermostats







Morrish Floor Plans  
 Mountbatten Park Phase 2  
 Type J

To view this property please contact Connells on

**T 01794 830 833**  
**E romsey@connells.co.uk**

13a The Hundred  
 ROMSEY SO51 8GD

Property Ref: ROM307053 - 0004

Tenure:Freehold EPC Rating: Exempt

**view this property online**  
**connells.co.uk/Property/ROM307053**



1. MONEY LAUNDERING REGULATIONS Intending purchasers will be asked to produce identification documentation at a later stage and we would ask for your co-operation in order that there will be no delay in agreeing the sale. 2. These particulars do not constitute part or all of an offer or contract. 3. The measurements indicated are supplied for guidance only and as such must be considered incorrect. Potential buyers are advised to recheck measurements before committing to any expense. 4. We have not tested any apparatus, equipment, fixtures, fittings or services and it is in the buyers interest to check the working condition of any appliances.

Connells Residential is registered in England and Wales under company number 1489613, Registered Office is Cumbria House, 16-20 Hockliffe Street, Leighton Buzzard, Bedfordshire, LU7 1GN. VAT Registration Number is 500 2481 05.

see all our properties at [www.connells.co.uk](http://www.connells.co.uk) | [www.rightmove.co.uk](http://www.rightmove.co.uk) | [www.zoopla.co.uk](http://www.zoopla.co.uk)