



Connells

Sandringham Crescent
Harrow



Property Description

Connells are delighted to present this well-proportioned four-bedroom end-of-terrace family home, ideally situated on the popular Sandringham Crescent in Harrow. Offering generous living space throughout, this property is perfect for growing families seeking a comfortable and conveniently located home.

The ground floor comprises a welcoming entrance hallway leading into two spacious reception rooms, both offering versatile accommodation for living and dining. To the rear, you will find a large, modern kitchen/diner providing ample space for family meals and entertaining, with direct access to the rear garden. A convenient downstairs WC completes the ground floor.

Upstairs, the property benefits from four bedrooms, including a spacious master bedroom featuring its own ensuite shower room. The remaining bedrooms are served by a contemporary family bathroom.

Externally, the home boasts a private rear garden, ideal for outdoor entertaining, relaxation, or family activities. As an end-of-terrace, the property also benefits from additional privacy and natural light.

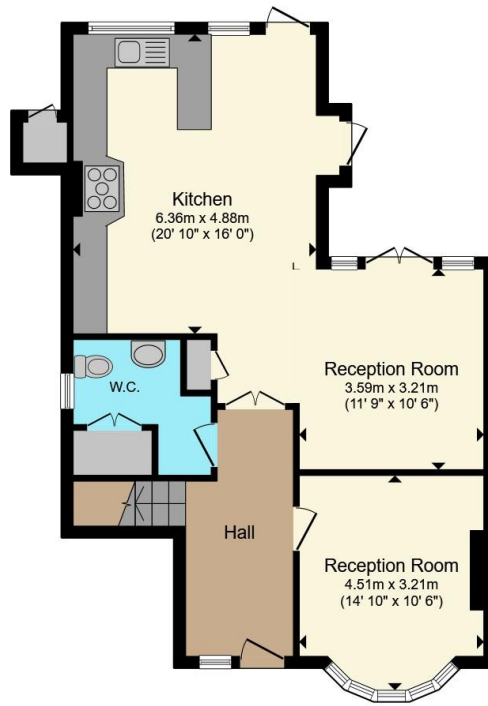
Located within easy reach of local amenities, reputable schools, and excellent transport links into Central London, this property offers both comfort and convenience.

Early viewing is highly recommended to fully appreciate all that this fantastic home has to offer.

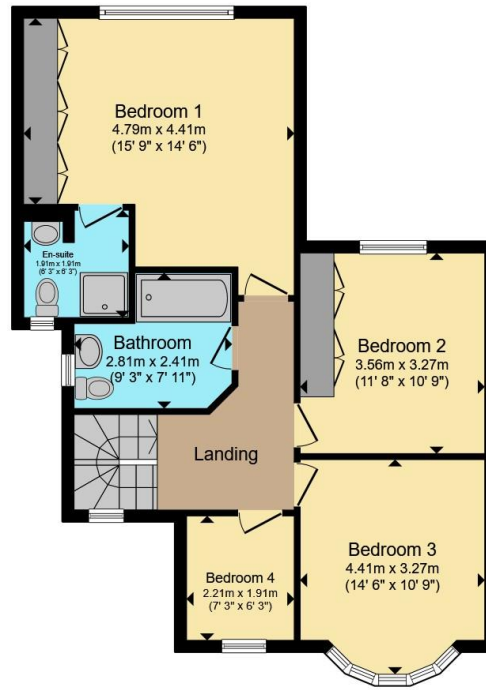
Agents Note:

Please be advised that these details are produced to the best of our knowledge from a visual inspection of the property, and due to the nature of the sale have not been confirmed as correct. We advise you to satisfy yourself in relation to the boundaries, condition and services prior to proceeding.





Ground Floor



First Floor

Total floor area 132.5 m² (1,427 sq.ft.) approx

This floor plan is for illustrative purposes only. It is not drawn to scale. Any measurements, floor areas (including any total floor area), openings and orientation are approximate. No details are guaranteed, they cannot be relied upon for any purpose and they do not form part of any agreement. No liability is taken for any error, omission or misstatement. A party must rely upon its own inspection(s). Powered by www.propertybox.io



To view this property please contact Connells on

T 020 8427 4321
E harrow@connells.co.uk

182 Station Road
 HARROW HA1 2RH

EPC Rating: Council Tax
 Awaited Band: D

view this property online connells.co.uk/Property/HRW313084

Tenure: Freehold



1. MONEY LAUNDERING REGULATIONS Intending purchasers will be asked to produce identification documentation at a later stage and we would ask for your co-operation in order that there will be no delay in agreeing the sale. 2. These particulars do not constitute part or all of an offer or contract. 3. The measurements indicated are supplied for guidance only and as such must be considered incorrect. Potential buyers are advised to recheck measurements before committing to any expense. 4. We have not tested any apparatus, equipment, fixtures, fittings or services and it is in the buyers interest to check the working condition of any appliances.

Connells Residential is registered in England and Wales under company number 1489613, Registered Office is Cumbria House, 16-20 Hockliffe Street, Leighton Buzzard, Bedfordshire, LU7 1GN. VAT Registration Number is 500 2481 05.

See all our properties at www.connells.co.uk | www.rightmove.co.uk | www.zoopla.co.uk

Property Ref: HRW313084 - 0002