



Connells

Queensway Court Queensway Place
Yeovil



Property Description

Offered to the market with no onward chain, this fantastic opportunity has arisen to acquire a spacious and well-presented two-bedroom upper floor apartment, ideally positioned in the heart of Yeovil. Perfectly suited to a range of buyers, the property combines convenient town centre living with comfortable and modern accommodation.

The apartment boasts two generously sized bedrooms, offering ample space for both relaxation and practicality. The standout feature of the home is the bright and airy open plan living area, which seamlessly incorporates a modern fitted kitchen, making it an ideal setting for both everyday living and entertaining.

Further benefits include an allocated parking space, adding to the convenience of this centrally located property. With its desirable location, excellent layout, and strong rental potential, this apartment presents an ideal investment opportunity, as well as a perfect first-time purchase for individuals or couples looking to step onto the property ladder.

Early viewing is highly recommended to fully appreciate the space and potential on offer. Contact Connells today for further information or to arrange your viewing appointment.



Entrance Hall

Entrance Hall: Fitted with an intercom entry system providing secure access to the communal entrance. The hallway includes a radiator for heating comfort and a mounted smoke alarm for safety.

Communal Area: The shared area benefits from a designated storage room, which houses the property's fuse box, offering practical space and convenient access for electrical controls.

Open Plan Kitchen / Lounge

A bright and spacious living area featuring double glazed French doors opening onto a Juliet balcony, along with two additional double glazed windows to the front aspect, allowing for an abundance of natural light. The room is warmed by two radiators and benefits from a well-appointed fitted kitchen with a range of wall and base units complemented by worktops over. Integrated appliances include an electric oven with gas hob, and a washing machine. A stainless-steel sink with drainer and an extractor fan complete this practical and modern space.

Bedroom One

A well-proportioned double bedroom featuring two double glazed windows to the side aspect, allowing for natural light. The room benefits from a radiator for comfort and a dedicated TV point, providing a practical and versatile space.

Bedroom Two

A well-presented room featuring two double glazed windows to the side aspect, allowing for good natural light. The room is further enhanced by a radiator, providing a comfortable and practical space.

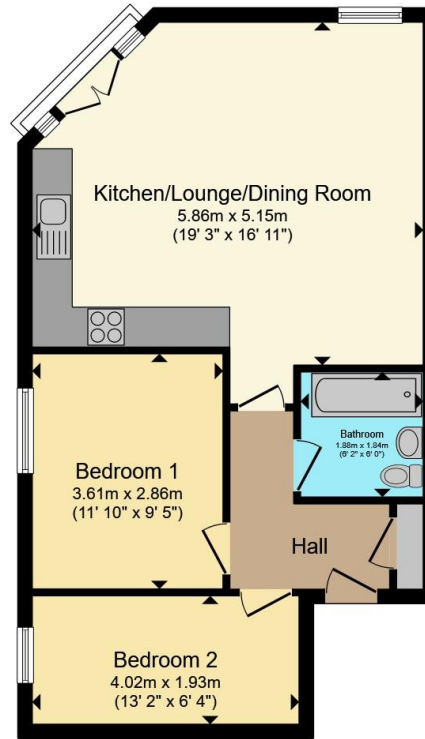
Bathroom

Fitted with a suite comprising a bath with overhead shower and part tiled walls extending from floor to mid-height. The room also features a wash hand basin, low-level WC, and a heated towel rail. Additional benefits include a shaver point and an extractor fan, ensuring both convenience and ventilation.









Total floor area 56.2 m² (605 sq.ft.) approx

This floor plan is for illustrative purposes only. It is not drawn to scale. Any measurements, floor areas (including any total floor area), openings and orientation are approximate. No details are guaranteed, they cannot be relied upon for any purpose and they do not form part of any agreement. No liability is taken for any error, omission or misstatement. A party must rely upon its own inspection(s). Powered by www.propertybox.io



To view this property please contact Connells on

T 01935 431 129
E yeovil@connells.co.uk

1-3 Princes Street
 YEOVIL BA20 1EW

EPC Rating: C Council Tax Band: B

Service Charge: 2880.00

Ground Rent: 302.00

Tenure: Leasehold

view this property online connells.co.uk/Property/YOV314276

This is a Leasehold property with details as follows; Term of Lease 125 years from 01 Jan 2010. Should you require further information please contact the branch. Please Note additional fees could be incurred for items such as



1. MONEY LAUNDERING REGULATIONS Intending purchasers will be asked to produce identification documentation at a later stage and we would ask for your co-operation in order that there will be no delay in agreeing the sale. 2. These particulars do not constitute part or all of an offer or contract. 3. The measurements indicated are supplied for guidance only and as such must be considered incorrect. Potential buyers are advised to recheck measurements before committing to any expense. 4. We have not tested any apparatus, equipment, fixtures, fittings or services and it is in the buyers interest to check the working condition of any appliances.

Connells Residential is registered in England and Wales under company number 1489613, Registered Office is Cumbria House, 16-20 Hockliffe Street, Leighton Buzzard, Bedfordshire, LU7 1GN. VAT Registration Number is 500 2481 05.

See all our properties at www.connells.co.uk | www.rightmove.co.uk | www.zoopla.co.uk

Property Ref: YOV314276 - 0002