



Connells

Hardy Crescent
Wimborne



Property Description

Situated in the sought-after market town of Wimborne, this well-presented three-bedroom mid-terrace home offers a fantastic blend of modern living and practical space, making it an ideal choice for families, first-time buyers or investors alike.

The property benefits from off-road parking to the front, providing convenient day-to-day access. Upon entering, you are welcomed into a bright and inviting layout, with a fitted kitchen positioned to the left of the property with dual aspect window and door, offering a range of storage units, work surfaces and space for appliances.

To the right the property opens into a spacious and comfortable lounge, also with dual aspect window and double doors leading into the conservatory, which enjoys pleasant views over the garden.

Upstairs, the property comprises three well-proportioned bedrooms, including a generous main bedroom, alongside a modern family bathroom finished to a contemporary standard.

Externally the home boasts an enclosed rear garden, offering a safe and private outdoor space. A particular highlight is the gated rear access, adding practicality and ease of use.

The garden also features a workshop with power and lighting.

Further benefits include gas central heating, double glazing and a convenient location within easy reach of local amenities, schools and transport links.

Entrance Hall

Lounge

Carpeted with front aspect double glazed window and rear aspect double glazed doors to conservatory, feature fireplace with log burner and mantle over, TV point and radiator.

Kitchen/Diner

Tiled flooring and part tiled walls, range of wall and base units, stainless steel sink with mixer tap and drainer, space for cooker with extractor fan and hood over, space for dishwasher and fridge/freezer and rear aspect double glazed window.

Wc

Tiled flooring and fully tiled walls, low level wc, hand wash basin with mixer tap and radiator.

Conservatory

Wooden effect flooring with double glazed side and rear aspect windows and double doors to rear garden and radiator.

Bedroom 1

Carpeted with double glazed front aspect window and radiator.

Bedroom 2

Carpeted with double glazed front aspect window and radiator.

Bedroom 3

Carpeted with double glazed rear aspect window and radiator.

Bathroom

Tiled flooring and part tiled walls, double glazed rear aspect window, low level WC, hand wash basin with mixer tap and vanity unit below, heated light up mirror over, panel bath with shower over and glass shower screen and heated towel rail.

Workshop

Workshop with power and light.

Front Garden

Enclosed front garden with mature bushes and flowers and driveway parking for multiple vehicles.

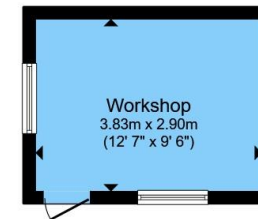
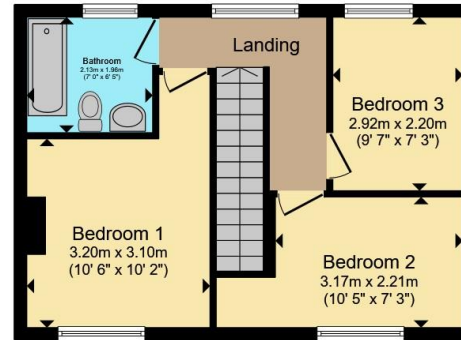
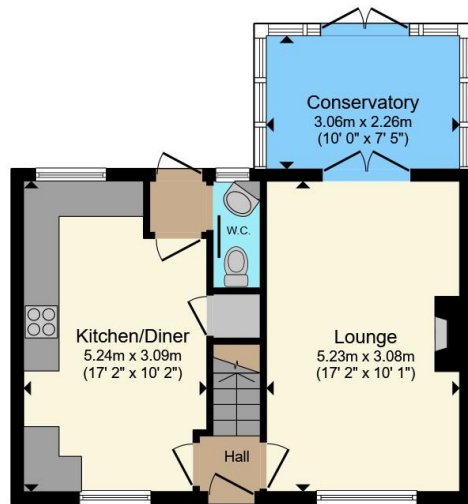
Rear Garden

Enclosed rear garden, part patio and part laid to lawn with workshop and rear gates access.









Ground Floor

First Floor

Outbuilding

Total floor area 96.8 m² (1,042 sq.ft.) approx

This floor plan is for illustrative purposes only. It is not drawn to scale. Any measurements, floor areas (including any total floor area), openings and orientation are approximate. No details are guaranteed, they cannot be relied upon for any purpose and they do not form part of any agreement. No liability is taken for any error, omission or misstatement. A party must rely upon its own inspection(s). Powered by www.propertybox.io

Connells

To view this property please contact Connells on

T 01202 861 677
E ferndown@connells.co.uk

37 Victoria Road
FERNDOWN BH22 9HT

EPC Rating: C Council Tax
Band: B

Tenure: Freehold

view this property online connells.co.uk/Property/FDN306561



1. MONEY LAUNDERING REGULATIONS Intending purchasers will be asked to produce identification documentation at a later stage and we would ask for your co-operation in order that there will be no delay in agreeing the sale. 2. These particulars do not constitute part or all of an offer or contract. 3. The measurements indicated are supplied for guidance only and as such must be considered incorrect. Potential buyers are advised to recheck measurements before committing to any expense. 4. We have not tested any apparatus, equipment, fixtures, fittings or services and it is in the buyers interest to check the working condition of any appliances.

Connells Residential is registered in England and Wales under company number 1489613, Registered Office is Cumbria House, 16-20 Hockliffe Street, Leighton Buzzard, Bedfordshire, LU7 1GN. VAT Registration Number is 500 2481 05.

See all our properties at www.connells.co.uk | www.rightmove.co.uk | www.zoopla.co.uk

Property Ref: FDN306561 - 0002