



Connells

Whitebeam Way
North Baddesley Southampton

Whitebeam Way North Baddesley Southampton SO52 9FZ

for sale
£330,000



Property Description

A well-presented modern terraced house situated in a popular cul-de-sac, within walking distance of local shops and schools in North Baddesley. The property is also conveniently located for the wider amenities of Romsey and Southampton, offering a variety of shopping, dining, and leisure facilities.

The home benefits from gas central heating, double glazing and solar panels, offering improved energy efficiency and potential savings on energy bills, and falls within the sought-after Mountbatten School catchment area. Excellent transport links are nearby, including the M27, providing access across the South Coast, along with mainline railway stations offering services to London Waterloo.

Entrance Hall And Porch

Double glazed front door, stairs to first floor.

Living Room

14' 3" x 13' 7" (4.34m x 4.14m)

Front aspect double glazed window, under-stairs storage cupboard, radiator, feature fireplace with gas fire.

Kitchen Diner

16' 6" x 8' 7" (5.03m x 2.62m)

Rear aspect with two double glazed windows and door to garden. Fitted with a range of base units, work surfaces, stainless steel sink unit, tiled splashbacks and space/plumbing for appliances. Radiator.

Conservatory

14' 11" x 8' 10" (4.55m x 2.69m)

Tiled flooring, double glazed windows and doors opening onto the rear garden, radiator.

Landing

Airing cupboard, access to loft.

Bedroom One

11' 4" x 9' 11" (3.45m x 3.02m)

Front aspect window, radiator, built-in wardrobe.

Bedroom Two

10' 1" x 9' 7" (3.07m x 2.92m)

Rear aspect window, radiator.

Bedroom Three

8' 4" x 6' 3" (2.54m x 1.91m)

Front aspect window, radiator.

Bathroom

Rear aspect window, fitted with a panel bath with shower over, wash hand basin, WC, and tiled surrounds.

Front Garden

Laid to lawn with pathway to entrance.

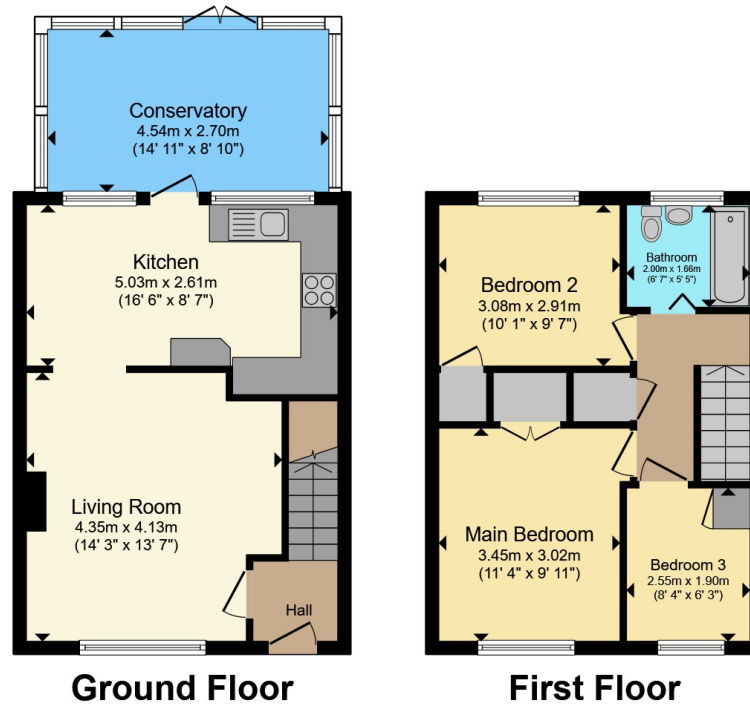
Rear Garden

Patio area with lawn and rear access to garage located in a nearby block.









Total floor area 83.9 m² (903 sq.ft.) approx

This floor plan is for illustrative purposes only. It is not drawn to scale. Any measurements, floor areas (including any total floor area), openings and orientation are approximate. No details are guaranteed, they cannot be relied upon for any purpose and they do not form part of any agreement. No liability is taken for any error, omission or misstatement. A party must rely upon its own inspection(s). Powered by www.propertybox.io



To view this property please contact Connells on

T 01794 830 833
E romsey@connells.co.uk

13a The Hundred
 ROMSEY SO51 8GD

EPC Rating: Awaiting
 Council Tax Band: C

Tenure: Freehold

view this property online connells.co.uk/Property/ROM307091



1. MONEY LAUNDERING REGULATIONS Intending purchasers will be asked to produce identification documentation at a later stage and we would ask for your co-operation in order that there will be no delay in agreeing the sale. 2. These particulars do not constitute part or all of an offer or contract. 3. The measurements indicated are supplied for guidance only and as such must be considered incorrect. Potential buyers are advised to recheck measurements before committing to any expense. 4. We have not tested any apparatus, equipment, fixtures, fittings or services and it is in the buyers interest to check the working condition of any appliances.

Connells Residential is registered in England and Wales under company number 1489613, Registered Office is Cumbria House, 16-20 Hockliffe Street, Leighton Buzzard, Bedfordshire, LU7 1GN. VAT Registration Number is 500 2481 05.

See all our properties at www.connells.co.uk | www.rightmove.co.uk | www.zoopla.co.uk

Property Ref: ROM307091 - 0003