

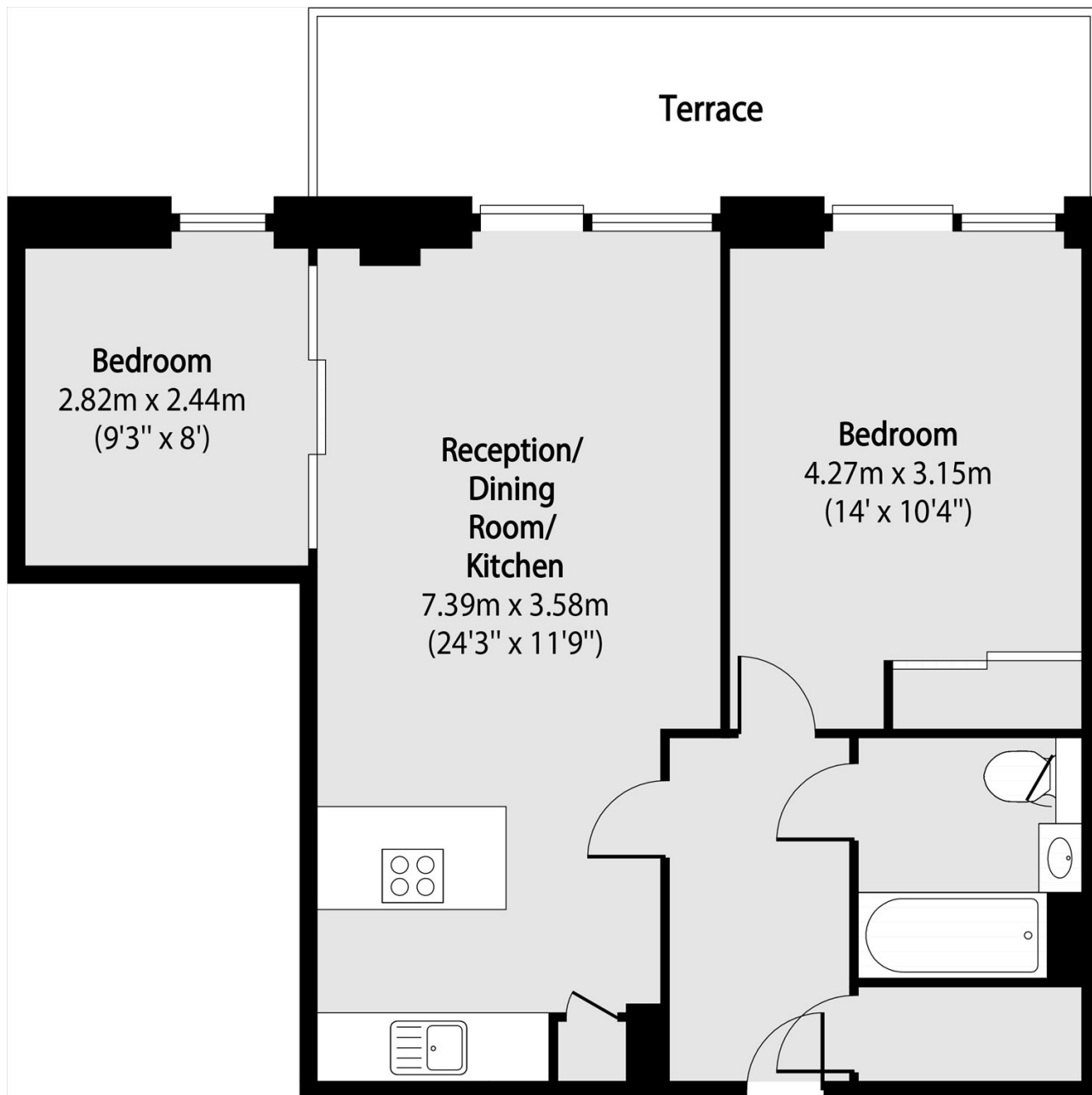


Commercial Street, E1

£3,450 Per month

 2  1  1  B

- Two Double Bedrooms
- 24 Hour Concierge
- Communal Roof Terrace
- Private Balcony
- Residents Gym
- Aldgate Station



Total area (approx): 58.62 sq m (631 sq. ft)

Terrace total area (approx): 11.61 sq m (125 sq. ft)

35A Wapping High Street,
London, E1W 1NR
020 7702 3456
ea2group.com