



**Connells**

Wheatsheaf Road  
Tividale Oldbury



## Property Description

This elegantly presented mid-terraced home in Tividale has undergone extensive renovations to a high standard, resulting in move-in ready living spaces. The property features a modern gloss kitchen equipped with appliances, three spacious bedrooms, and a generously landscaped rear garden. Its prime location offers easy access to amenities, local schools, and transport links, making it an excellent choice for families and first-time buyers alike.

## Entrance Hall

Double glazed door to the front elevation, double glazed window to the front, stairs to first floor accommodation.

## Lounge

12' 11" x 12' 3" ( 3.94m x 3.73m )

Double glazed window to the front elevation, central heating radiator.

## Kitchen / Diner

19' x 9' 10" ( 5.79m x 3.00m )

A fitted gloss kitchen to include a range of wall and base units with work surfaces over, porcelain sink with mixer tap over, double electric oven & gas hob with extractor hood over, integrated fridge freezer, integrated microwave, dishwasher, double glazed window to the rear, double glazed french doors to the rear leading to garden.



## First Floor

### Landing

Loft access.

### Bedroom One

12' 4" x 10' 9" ( 3.76m x 3.28m )

Double glazed window to the front elevation, fitted wardrobes.

### Bedroom Two

9' 5" x 8' 9" ( 2.87m x 2.67m )

Double glazed window to the front elevation, central heating radiator, built-in storage cupboard.

### Bedroom Three

9' 10" x 9' 8" ( 3.00m x 2.95m )

Double glazed window to the rear, central heating radiator.

### Bathroom

Suite to comprise bath, shower shower cubicle, wash hand basin, low level w.c., tiling, storage cupboard housing boiler, double glazed window to the rear.

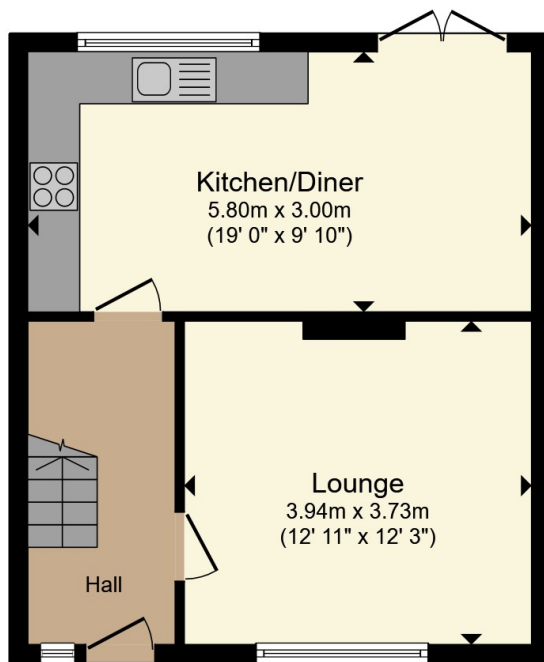
### Outside

To the front of the property tarmac driveway giving off road parking, shared side access to rear garden. Landscaped rear garden having slabbed paved patio area, lawned area, bark details and further patio area, brick built stores ( one being w.c., one with power & plumbing for washing machine).

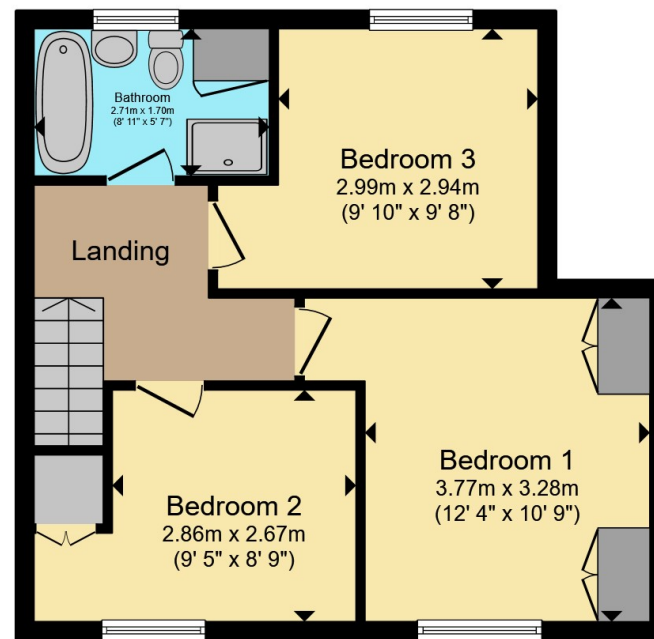








**Ground Floor**



**First Floor**

Total floor area 84.0 m<sup>2</sup> (904 sq.ft.) approx

This floor plan is for illustrative purposes only. It is not drawn to scale. Any measurements, floor areas (including any total floor area), openings and orientation are approximate. No details are guaranteed, they cannot be relied upon for any purpose and they do not form part of any agreement. No liability is taken for any error, omission or misstatement. A party must rely upon its own inspection(s). Powered by [www.propertybox.io](http://www.propertybox.io)



To view this property please contact Connells on

**T 01384 214 770**  
**E [dudley@connells.co.uk](mailto:dudley@connells.co.uk)**

4 & 5 Stone Street  
 DUDLEY DY1 1NS

EPC Rating: C Council Tax  
 Band: B

Tenure: Freehold

**view this property online [connells.co.uk/Property/DUD314819](http://connells.co.uk/Property/DUD314819)**



1. MONEY LAUNDERING REGULATIONS Intending purchasers will be asked to produce identification documentation at a later stage and we would ask for your co-operation in order that there will be no delay in agreeing the sale. 2. These particulars do not constitute part or all of an offer or contract. 3. The measurements indicated are supplied for guidance only and as such must be considered incorrect. Potential buyers are advised to recheck measurements before committing to any expense. 4. We have not tested any apparatus, equipment, fixtures, fittings or services and it is in the buyers interest to check the working condition of any appliances.

Connells Residential is registered in England and Wales under company number 1489613, Registered Office is Cumbria House, 16-20 Hockliffe Street, Leighton Buzzard, Bedfordshire, LU7 1GN. VAT Registration Number is 500 2481 05.

**See all our properties at [www.connells.co.uk](http://www.connells.co.uk) | [www.rightmove.co.uk](http://www.rightmove.co.uk) | [www.zoopla.co.uk](http://www.zoopla.co.uk)**

Property Ref: DUD314819 - 0003