



**Kew Close, Birmingham B37 6NY**

**welcome to**

**Kew Close, Birmingham**

**\*\*THREE BEDROOM END OF TERRACE\*\*LOUNGE\*\*FITTED KITCHEN\*\*DOWNSTAIRS WC\*\*UPSTAIRS SHOWER ROOM\*\*FRONT AND REAR GARDENS\*\*SEPARATE GARAGE\*\*WELL MAINTAINED\*\*VIEWING RECOMMENDED\*\***



### Entrance Porch

Double-glazed window to front and side, tiled floor and wall light.

### Entrance Hall

Radiator, ceiling light point and built in cupboard.

### Cloakroom

Double-glazed window to front, low level w.c., ceiling light point and tiled floor.

### Lounge

Double-glazed window and door to rear, two radiators and feature fireplace.

### Kitchen

Double-glazed window to front, radiator, ceiling light point, cupboards, drawers and base units, roll top work surface, hob, oven, cooker hood, one and a half bowl sink and drainer, plumbing for washing machine.

### Landing

Loft access, ceiling light point and built in cupboard.

### Bedroom One

Double-glazed window to front, radiator, ceiling light point and fitted wardrobes.

### Bedroom Two

Double-glazed window to rear, radiator and ceiling light point.

### Bedroom Three

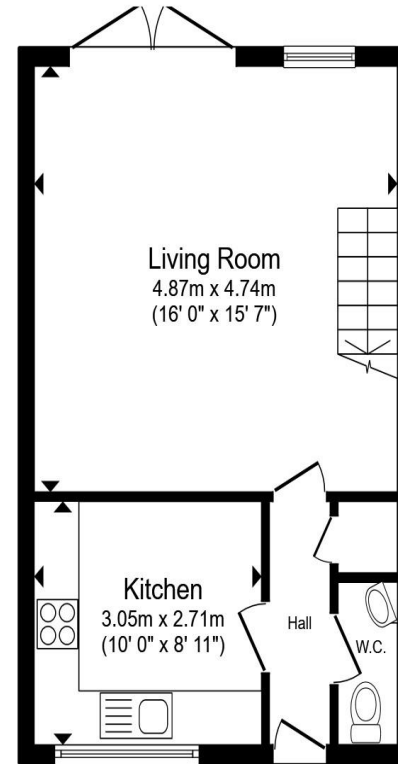
Double-glazed window to rear, radiator and ceiling light point.

### Shower Room

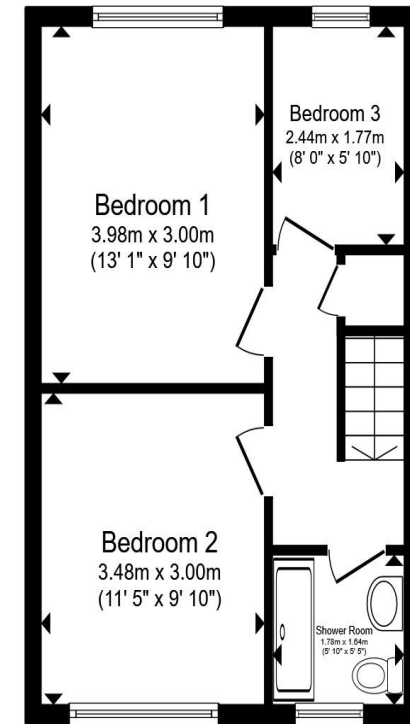
Double-glazed window to front, heated towel radiator, walk in shower, vanity sink, low level w.c., tiled walls and floors.

### Rear Garden

Decked patio area, artificial lawn, gravelled area, enclosed by fencing and gate for side access.



Ground Floor



First Floor

Total floor area 73.5 m<sup>2</sup> (792 sq.ft.) approx

This floor plan is for illustrative purposes only. It is not drawn to scale. Any measurements, floor areas (including any total floor area), openings and orientation are approximate. No details are guaranteed, they cannot be relied upon for any purpose and they do not form part of any agreement. No liability is taken for any error, omission or misstatement. A party must rely upon its own inspection(s). Powered by [www.propertybox.io](http://www.propertybox.io)



**view this property online** [shipways.co.uk/Property/CAB110333](http://shipways.co.uk/Property/CAB110333)



welcome to

## Kew Close, Birmingham

- END TERRACE PROPERTY
- WELL MAINTAINED
- THREE BEDROOMS
- SEPARATE GARAGE
- LOUNGE FITTED KITCHEN

Tenure: Freehold EPC Rating: C  
Council Tax Band: B

offers over  
**£210,000**



Please note the marker reflects the  
postcode not the actual property

view this property online [shipways.co.uk/Property/CAB110333](https://shipways.co.uk/Property/CAB110333)



Property Ref:  
CAB110333 - 0004

1. MONEY LAUNDERING REGULATIONS Intending purchasers will be asked to produce identification documentation at a later stage and we would ask for your co-operation in order that there is no delay in agreeing the sale. 2. These particulars do not constitute part or all of an offer or contract. 3. The measurements indicated are supplied for guidance only and as such must be considered incorrect. Potential buyers are advised to recheck measurements before committing to any expense. 4. We have not tested any apparatus, equipment, fixtures or services and it is in the buyers interest to check the working condition of any appliances. 5. Where an EPC, or a Home Report (Scotland only) is held for this property, it is available for inspection at the branch by appointment. If you require a printed version of a Home Report, you will need to pay a reasonable production charge reflecting printing and other costs. 6. We are not able to offer an opinion either written or verbal on the content of these reports and this must be obtained from your legal representative. 7. Whilst we take care in preparing these reports, a buyer should ensure that his/her legal representative confirms as soon as possible all matters relating to title including the extent and boundaries of the property and other important matters before exchange of contracts.

Shipways is a trading name of Sequence (UK) Limited which is registered in England and Wales under company number 4268443, Registered Office is Cumbria House, 16-20 Hockliffe Street, Leighton Buzzard, Bedfordshire, LU7 1GN. VAT Registration Number is 500 2481 05.

  
shipways



**0121 747 4722**



[castlebromwich@shipways.co.uk](mailto:castlebromwich@shipways.co.uk)



258 Chester Road, Castle Bromwich,  
BIRMINGHAM, West Midlands, B36 0JE



[shipways.co.uk](https://shipways.co.uk)