



PER MONTH

£2,000 Per Month

Ellerdine Road

Hounslow, TW3 2PZ

PROPERTY SUMMARY

This exceptional 2 Bedroom ground floor maisonette offers a rare combination of luxury, style & practicality. Recently refurbished to an impeccable standard, The property feels brand new throughout boasting high-end finishes and a sleek open plan layout that's both functional and beautifully designed. The property further benefits from private rear garden and is available now.

2



1



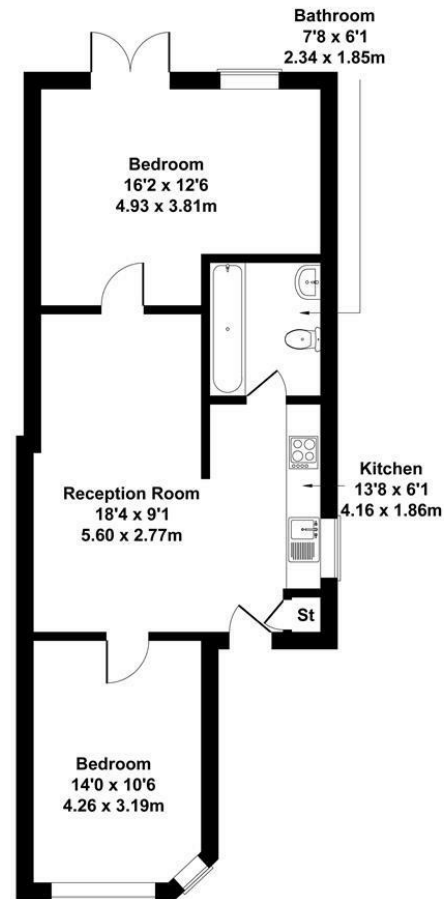
1





Ellerdine Road Hounslow

Approximate Gross Internal Area
646 sq ft - 60 sq m



GROUND FLOOR

Not to Scale. Produced by The Plan Portal 2025
For Illustrative Purposes Only.



LOCAL AUTHORITY

Hounslow

TENURE

COUNCIL TAX BAND

D

VIEWINGS

By prior appointment only

Energy Efficiency Rating		Current	Potential
Very energy efficient - lower running costs			
(92 plus) A			
(81-91) B			
(69-80) C			
(55-68) D			
(39-54) E			
(21-38) F			
(1-20) G			
Not energy efficient - higher running costs			
England & Wales	EU Directive 2002/91/EC		



Agents Note: Whilst every care has been taken to prepare these particulars, they are for guidance purposes only. All measurements are approximate and are for general guidance purposes only and whilst every care has been taken to ensure their accuracy, they should not be relied upon and potential buyers/tenants are advised to recheck the measurements

**Shaw
& Co**
ESTATE
AGENTS

OFFICE ADDRESS
10 Central Parade
New Heston Road
Heston
Middlesex
TW5 0LJ

OFFICE DETAILS
0208 570 7258
heston@shawandcoestates.com