



Swan Close, STOWMARKET, IP14 1UT

welcome to

Swan Close, STOWMARKET

This delightful semi-detached family home offers a lounge, integrated kitchen, 3 bedrooms, en-suite, family bathroom, large driveway, garage, and an enclosed rear garden with garden office. Conveniently located near amenities and schools, it's an ideal choice for modern living.

Swan Close

This delightful semi-detached family home offers a perfect blend of comfort, convenience, and modern living. With its spacious interiors and well-designed exterior, it is an ideal choice for families seeking a welcoming and functional space.

The heart of the home is undoubtedly the expansive lounge area. Bathed in natural light, this space provides a warm and inviting atmosphere, perfect for family gatherings or relaxing evenings. Its generous size allows for versatile furniture arrangements, ensuring every corner is both cozy and practical.

The partial integrated kitchen, boasting sleek countertops, appliances, and ample storage. Its thoughtful design ensures efficiency and ease, whether you're preparing a weekday meal or entertaining guests. The kitchen seamlessly connects to the rest of the living area, promoting an open and inclusive environment.

Upstairs, the home offers three well-appointed bedrooms, each designed for comfort and tranquillity. The master bedroom features an elegant en-suite, providing a private retreat after a long day. Additionally, a family bathroom caters to the needs of the entire household, equipped with modern fixtures and a soothing ambiance.

Externally, the property is equally impressive. A large driveway offers ample parking space for multiple vehicles, while the adjoining garage provides additional storage or parking options. This setup ensures convenience and security for all residents.

The enclosed rear garden is a standout feature, offering a safe and serene space for outdoor activities. Accessible via side entrance, it includes a well-maintained patio area, perfect for al fresco dining or simply enjoying the outdoors.

Adding to the property's charm is a versatile garden office located within the garden. Equipped with power and lighting, this space can be tailored to meet various needs, whether as a home office, gym, or creative studio.

Stowmarket

Stowmarket is a charming market town located in Suffolk, England. Housed in the heart of East Anglia, it boasts a rich history, picturesque landscapes, and a vibrant community.

Stowmarket offers a variety of attractions and activities for both residents and visitors. The Food Museum is one of the town's most popular attractions, providing insight into the rural and agricultural heritage of the region. It features historic buildings, exhibitions, and beautiful gardens. St. Peter and St. Mary Church is a stunning example of medieval architecture, standing as a testament to the town's historical and cultural heritage. The Regal Theatre, a beloved local institution, hosts a variety of performances, including films, live music, and theatre productions.

Stowmarket is known for its tight-knit community and welcoming atmosphere. The town hosts several annual events and festivals that bring people together, such as the Stowfiesta music festival and the Christmas Tree Festival. These events highlight the town's lively spirit and offer an opportunity for both residents and visitors to engage with the local culture.

As a traditional market town, Stowmarket maintains a strong local economy supported by various industries, including agriculture, retail, and manufacturing. The town's market days, held twice a week, continue to draw shoppers and vendors, maintaining a vibrant local trade.

Stowmarket is well-connected by road and rail, with the A14 providing easy access to nearby towns and cities. The Stowmarket railway station offers regular services to London, Norwich, and Cambridge, making it a convenient location for commuters. The town offers a range of educational facilities, from primary schools to a high school, ensuring that families have access to quality education options. Additionally, the town is equipped with essential services, including healthcare facilities, libraries, and recreational centres, contributing to a high quality of life for its residents.





Accommodation Entrance

Part glazed front door, coved ceiling, radiator and carpeted flooring.

Cloakroom

Frosted window to side, low level WC, wall mounted sink, coved ceiling, radiator and ceramic tiled flooring.

Lounge

Window to front, stairs to first floor, under stairs cupboard, coved ceiling, radiator and carpeted flooring.

Kitchen/Diner

Window and door to rear, wall and base units with roll top work surfaces, stainless steel single sink with drainer and mixer tap, electric oven with hob and extractor over, integral fridge, spaces for appliances, coved ceiling, radiator and ceramic tiled flooring.

Landing

Access to boarded loft with ladder, coved ceiling and carpeted flooring.

Bedroom One

Two windows to rear, built in wardrobe and over bed storage, coved ceiling, radiator and carpeted flooring.

En-Suite

Shower cubicle, wall mounted sink, low level WC, extractor fan, coved ceiling, part tiled walls and ceramic tiled flooring.

Bedroom Two

Window to front, fitted wardrobes, coved ceiling, radiator and carpeted flooring.

Bedroom Three

Window to front, fitted office furniture, coved ceiling, radiator and carpeted flooring.

Family Bathroom

Panelled bath with shower over and screen, low level WC, pedestal hand wash basin, extractor fan, coved ceiling, part tiled walls, radiator and ceramic tiled flooring.

Garage

17' 6" x 8' 3" (5.33m x 2.51m)

Up and over door with window and door to rear and power & lighting.

Rear Garden

Fence enclosed rear garden with side access gate, laid to lawn with path.

Garden Office

10' 5" x 21' (3.17m x 6.40m)

Windows to front and side, door to front, power and lighting and vinyl flooring.



view this property online williamhbrown.co.uk/Property/SMK105270



welcome to

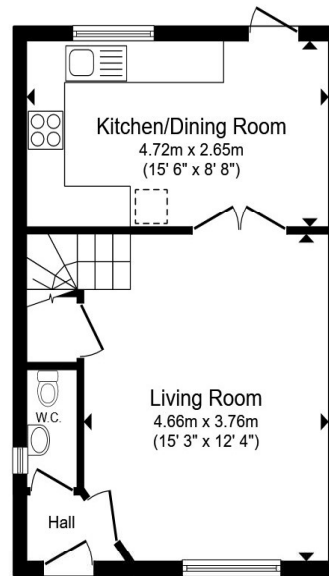
Swan Close, STOWMARKET

- Semi Detached Home
- Three Bedrooms
- Cloakroom, En-Suite & Family Bathroom
- Enclosed Rear Garden With Versatile Garden Office
- Garage & Ample Off Road Parking

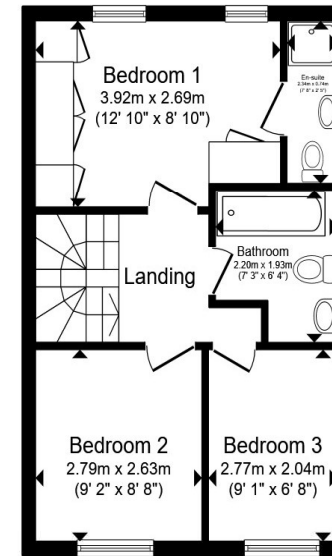
Tenure: Freehold EPC Rating: C
Council Tax Band: C

offers in excess of

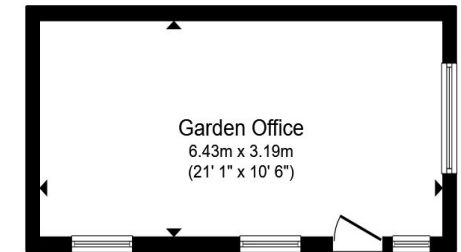
£300,000



Ground Floor



First Floor



Outbuilding

Total floor area 91.6 m² (986 sq.ft.) approx

This floor plan is for illustrative purposes only. It is not drawn to scale. Any measurements, floor areas (including any total floor area), openings and orientation are approximate. No details are guaranteed, they cannot be relied upon for any purpose and they do not form part of any agreement. No liability is taken for any error, omission or misstatement. A party must rely upon its own inspection(s). Powered by www.propertybox.io



view this property online williamhbrown.co.uk/Property/SMK105270



Property Ref:
SMK105270 - 0009

1. MONEY LAUNDERING REGULATIONS Intending purchasers will be asked to produce identification documentation at a later stage and we would ask for your co-operation in order that there is no delay in agreeing the sale. 2. These particulars do not constitute part or all of an offer or contract. 3. The measurements indicated are supplied for guidance only and as such must be considered incorrect. Potential buyers are advised to recheck measurements before committing to any expense. 4. We have not tested any apparatus, equipment, fixtures or services and it is in the buyers interest to check the working condition of any appliances. 5. Where an EPC, or a Home Report (Scotland only) is held for this property, it is available for inspection at the branch by appointment. If you require a printed version of a Home Report, you will need to pay a reasonable production charge reflecting printing and other costs. 6. We are not able to offer an opinion either written or verbal on the content of these reports and this must be obtained from your legal representative. 7. Whilst we take care in preparing these reports, a buyer should ensure that his/her legal representative confirms as soon as possible all matters relating to title including the extent and boundaries of the property and other important matters before exchange of contracts.

William H Brown is a trading name of Sequence (UK) Limited which is registered in England and Wales under company number 4268443. Registered Office is Cumbria House, 16-20 Hockliffe Street, Leighton Buzzard, Bedfordshire, LU7 1GN. VAT Registration Number is 500 2481 05.

william h brown



01449 614459



stowmarket@williamhbrown.co.uk



10 Wilkes Way, STOWMARKET, Suffolk, IP14 1DE



williamhbrown.co.uk