



Lone Valley, Waterlooville PO7 5EB

welcome to

Lone Valley, Waterloo

Beautifully presented and extended three bed semi-detached chalet bungalow with stunning open-plan living, bi-fold doors, landscaped private garden, driveway, garage, and versatile upstairs space. Chain complete.

Entrance Hall

Stairs leading to first floor. Storage cupboard.
Doors to:

Kitchen/Lounge/Diner

Open plan with tiled floor and spotlights. Fireplace to lounge area with hearth and mantel over. To the dining area is space for table and chairs, bi-fold doors to rear garden and two vertical radiators. To the kitchen area is a skylight, stable door to rear garden, range of wall and base unit with work surface over. Range style oven and hob with extractor hood over, built-in dishwasher, space for American style fridge/freezer. Kitchen island with inset Butler sink and mixer tap. Ample cupboard space.

Utility Room

Storage space. Space for washing machine and tumble dryer.

Bathroom

Double glazed windows to rear and side aspects. Fully tiled with panel enclosed bath with shower over, low level WC and pedestal wash hand basin. Radiator.

Bedroom Two

Double glazed window to front aspect. Carpet flooring, radiator, built-in wardrobes.

Bedroom Three

Currently being used as a further lounge. Double glazed bay window to front aspect. Carpet flooring, radiator, fireplace with hearth and mantel over.

First Floor Landing

Door to eaves storage space. Door to bedroom.

Bedroom One

Double glazed window to front aspect, double glazed skylight window to rear aspect. Built-in cupboard. Door to en-suite.

En-Suite

Double glazed skylight window. Shower cubicle, low level WC, wash hand basin set over vanity unit. Heated towel rail, tiled walls.

Outside Front

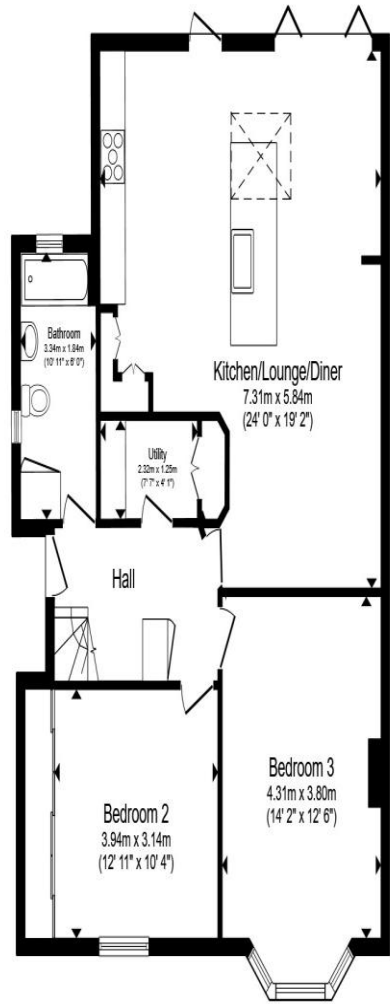
Block paved driveway and frontage, providing off road parking. Leading to garage. Pedestrian gate to rear garden.

Garage

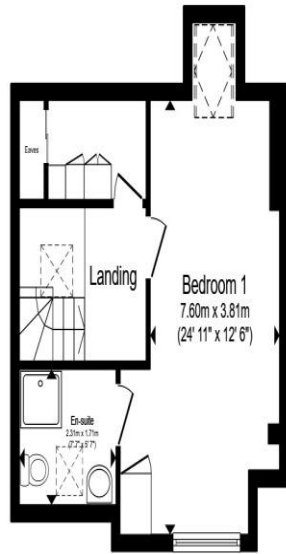
Up and over door, power and light. Personal door to garden.

Rear Garden

Laid to patio with steps up to lawned garden. Pond with railings around. Enclosed by panel fencing with mature shrubs.



Ground Floor



First Floor



Garage

Total floor area 140.4 m² (1,511 sq.ft.) approx

This floor plan is for illustrative purposes only. It is not drawn to scale. Any measurements, floor areas (including any total floor area), openings and orientation are approximate. No details are guaranteed, they cannot be relied upon for any purpose and they do not form part of any agreement. No liability is taken for any error, omission or misstatement. A party must rely upon its own inspection(s). Powered by www.propertybox.io



welcome to
Lone Valley,
Waterlooville

- Three Bed Extended Chalet Bungalow
- Chain Complete
- Open Plan Living Space
- Bi-Fold Doors
- Landscaped Private Garden

Tenure: Freehold EPC Rating: D
Council Tax Band: C

guide price
£485,000



view this property online fox-and-sons.co.uk/Property/WLV109795



Property Ref:
WLV109795 - 0003

1. MONEY LAUNDERING REGULATIONS Intending purchasers will be asked to produce identification documentation at a later stage and we would ask for your co-operation in order that there is no delay in agreeing the sale. 2. These particulars do not constitute part or all of an offer or contract. 3. The measurements indicated are supplied for guidance only and as such must be considered incorrect. Potential buyers are advised to recheck measurements before committing to any expense. 4. We have not tested any apparatus, equipment, fixtures or services and it is in the buyers interest to check the working condition of any appliances. 5. Where an EPC, or a Home Report (Scotland only) is held for this property, it is available for inspection at the branch by appointment. If you require a printed version of a Home Report, you will need to pay a reasonable production charge reflecting printing and other costs. 6. We are not able to offer an opinion either written or verbal on the content of these reports and this must be obtained from your legal representative. 7. Whilst we take care in preparing these reports, a buyer should ensure that his/her legal representative confirms as soon as possible all matters relating to title including the extent and boundaries of the property and other important matters before exchange of contracts.

Fox & Sons is a trading name of Sequence (UK) Limited which is registered in England and Wales under company number 4268443, Registered Office is Cumbria House, 16-20 Hockliffe Street, Leighton Buzzard, Bedfordshire, LU7 1GN. VAT Registration Number is 500 2481 05.


fox & sons



023 9226 2447



Waterlooville@fox-and-sons.co.uk



81B London Road, WATERLOOVILLE,
Hampshire, PO7 7ES



fox-and-sons.co.uk