



Chaffinch Drive, Shepshed

welcome to

Chaffinch Drive, Shepshed

We are pleased to offer to the market this three-bedroom detached home overlooking green space and situated on the Kings Gate Development, located off Hathern Road in the charming market town of Shepshed! Built in 2021, this home still has the benefit of the remainder of the 10 year NHBC warranty!

Entrance

Entrance to the property is via a upvc front door into the entrance hallway. The entrance hallway has doors to the living room and kitchen/diner.

Lounge

13' x 12' 3" (3.96m x 3.73m)

The lounge has carpeted flooring, a upvc double glazed window to the front elevation, storage cupboard fitted into the wall and a radiator.

Kitchen

18' x 9' 2" (5.49m x 2.79m)

The kitchen is fitted with a range of base and wall mounted units, tiled flooring, space for a dining table and chairs, integrated fridge freezer, integrated dishwasher, stainless steel sink with drainer, oven and hob, double doors out to the rear garden and access through to the utility.

Utility Room

7' 6" x 5' 4" (2.29m x 1.63m)

The utility room has a radiator, door to the rear, tiled flooring and space and plumbing for a washing machine.

Wc

The ground floor wc offers a low flush wc, pedestal hand wash basin with tiled splash back, radiator and extractor fan.

First Floor Landing

The first-floor landing has stairs rising from the ground floor, an airing cupboard, a loft hatch leading to an insulated loft and doors to all first-floor rooms.

Bedroom One

13' x 10' 9" (3.96m x 3.28m)

Bedroom one has carpeted flooring, a radiator, a upvc double glazed window to the front elevation and a door to the ensuite.

Ensuite

The ensuite is fitted with a three-piece suite including low level wc, shower cubicle with shower over and a hand wash basin, heated towel rail, vinyl flooring, an extractor fan and a upvc double glazed window to the front elevation.

Bedroom Two

9' 5" x 9' 4" (2.87m x 2.84m)

Bedroom two has carpeted flooring, a radiator and a upvc double glazed window to the rear elevation.

Bedroom Three

8' 4" x 9' 7" (2.54m x 2.92m)

Bedroom three has carpeted flooring, a radiator and a upvc double glazed window to the rear elevation.



Family Bathroom

The bathroom has a three-piece suite comprising of panel bath with shower over, low level wc and hand wash basin, tiled walls, vinyl flooring, a heated towel rail and a upvc double glazed window to the side elevation.

Outside

To the front of the property there is front garden with a pathway to the front door. To the rear of the property there is a levelled garden, with patio seating area and astro turf lawn. an electric point, a water point and access out to the garage and off-road parking. The garage has electrics and a pull-down loft ladder with access to a boarded sectioned perfect for additional storage.



view this property online williamhbrown.co.uk/Property/LBH115700



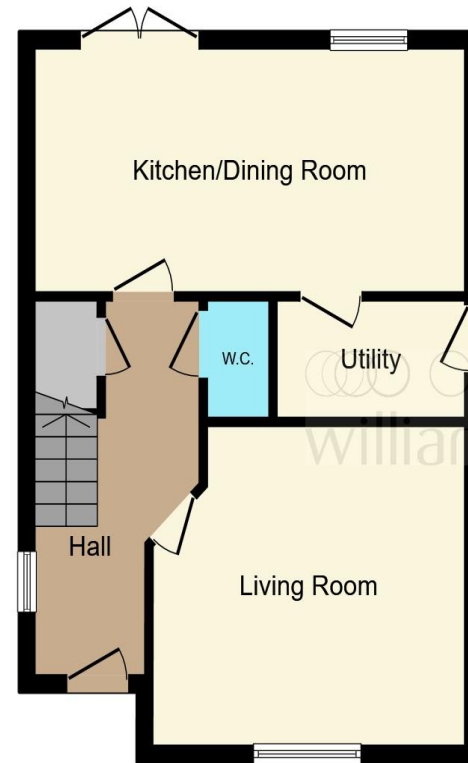
welcome to

Chaffinch Drive, Shepshed

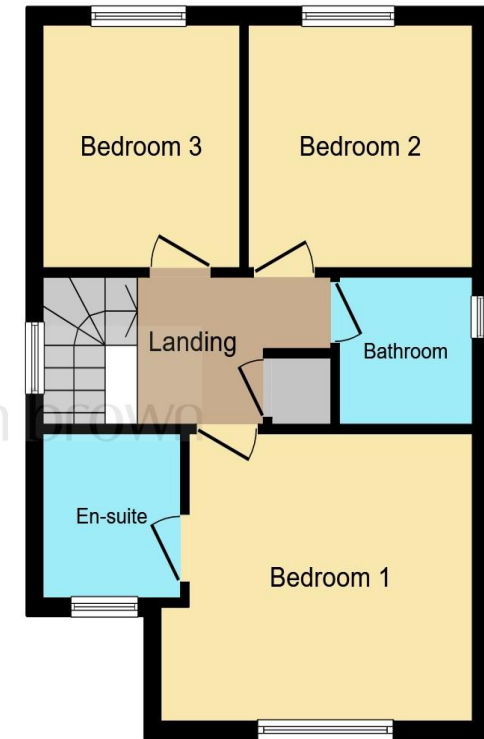
- NHBC Warranty Remaining
- Kings Gate Development
- UPVC Double Glazing and Gas Central Heating
- Three Well-Proportioned Bedrooms
- Ensuite to Master Bedroom

Tenure: Freehold EPC Rating: B
Council Tax Band: D

£270,000



Ground Floor



First Floor

This floor plan is for illustrative purposes only. It is not drawn to scale. Any measurements, floor areas (including any total floor area), openings and orientation are approximate. No details are guaranteed, they cannot be relied upon for any purpose and they do not form part of any agreement. No liability is taken for any error, omission or misstatement. A party must rely upon its own inspection(s). Powered by www.focalagent.com

view this property online williamhbrown.co.uk/Property/LBH115700



Property Ref:
LBH115700 - 0005

1. MONEY LAUNDERING REGULATIONS Intending purchasers will be asked to produce identification documentation at a later stage and we would ask for your co-operation in order that there is no delay in agreeing the sale. 2. These particulars do not constitute part or all of an offer or contract. 3. The measurements indicated are supplied for guidance only and as such must be considered incorrect. Potential buyers are advised to recheck measurements before committing to any expense. 4. We have not tested any apparatus, equipment, fixtures or services and it is in the buyers interest to check the working condition of any appliances. 5. Where an EPC, or a Home Report (Scotland only) is held for this property, it is available for inspection at the branch by appointment. If you require a printed version of a Home Report, you will need to pay a reasonable production charge reflecting printing and other costs. 6. We are not able to offer an opinion either written or verbal on the content of these reports and this must be obtained from your legal representative. 7. Whilst we take care in preparing these reports, a buyer should ensure that his/her legal representative confirms as soon as possible all matters relating to title including the extent and boundaries of the property and other important matters before exchange of contracts.

William H Brown is a trading name of Sequence (UK) Limited which is registered in England and Wales under company number 4268443, Registered Office is Cumbria House, 16-20 Hockliffe Street, Leighton Buzzard, Bedfordshire, LU7 1GN. VAT Registration Number is 500 2481 05.

 **william h brown**



01509 214686



loughborough@williamhbrown.co.uk



22-23 Swan Street, LOUGHBOROUGH,
Leicestershire, LE11 5BL



williamhbrown.co.uk