



Connells
01452 350 350
FOR SALE

Connells

Longs Drive
Yate BRISTOL



Property Description

This one-bedroom semi-detached house offers a fantastic opportunity for first time buyers, downsizers, or investors looking for a low-maintenance, secure home. Combining the affordability of a small home, this residence boasts a modern layout designed to maximize space.

Entrance

A UPVC double glazed front door leading into an entrance porch, which has got a storage cupboard and there is a further door leading into the living room.

Lounge

12' 2" x 11' (3.71m x 3.35m)
UPVC double glazed window to the front aspect, central heating radiator, laminate flooring, stairs rising up to the first floor, doors off to kitchen.

Kitchen

9' 1" x 7' 2" (2.77m x 2.18m)
UPVC double glazed window to the front aspect, understairs storage cupboard, a range of base units and drawers with matching wall units and rolled edge worktops, freestanding oven and grill with inset of four rings electric hob, a single bowl stainless steel sink and drainer with a mixer taps and tiled splashback, space for washing machine, laminate flooring, a small window to the side.

First Floor Landing

Doors off to bathroom and bedroom, UPVC double glazed window to the side.

Bedroom

12' 3" max x 8' 6" max (3.73m max x 2.59m max)
UPVC double glazed window to the front, central heating radiator, fitted double wardrobes.

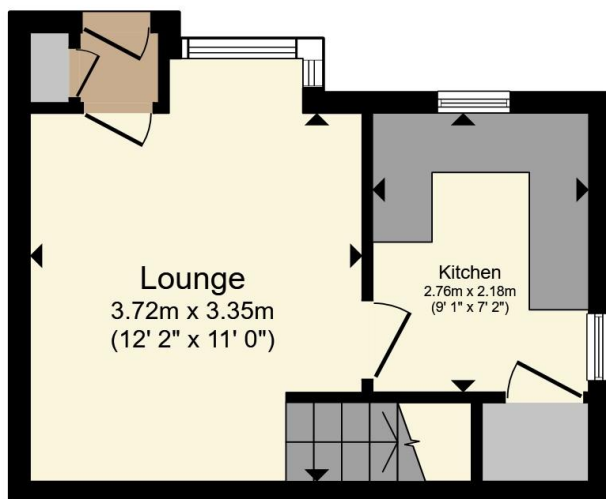
Bathroom

7' 2" x 5' 9" (2.18m x 1.75m)
UPVC double glazed obscured glass window, a hand wash basin, low level flush wc, a panelled bathtub with taps, shower screen and main shower above, chrome heated towel radiator, tiled around and tiled flooring.

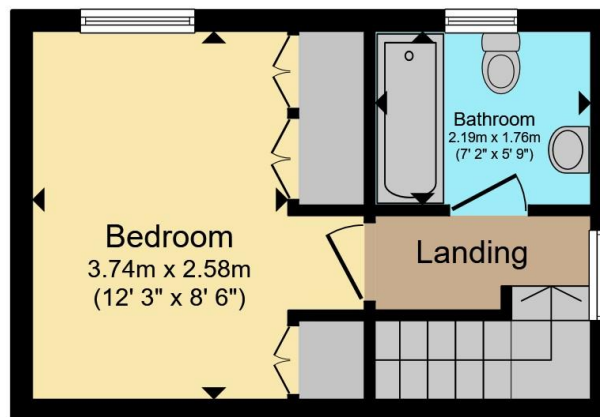
Outside

To The Front
A paved path leading to the front door.





Ground Floor



First Floor

Total floor area 43.7 m² (471 sq.ft.) approx

This floor plan is for illustrative purposes only. It is not drawn to scale. Any measurements, floor areas (including any total floor area), openings and orientation are approximate. No details are guaranteed, they cannot be relied upon for any purpose and they do not form part of any agreement. No liability is taken for any error, omission or misstatement. A party must rely upon its own inspection(s). Powered by www.propertybox.io



To view this property please contact Connells on

T 01454 320 555
E yate@connells.co.uk

72-74 Station Road Yate
 BRISTOL BS37 4PH

EPC Rating: C Council Tax
 Band: A

view this property online connells.co.uk/Property/YAT308393

Tenure: Freehold



1. MONEY LAUNDERING REGULATIONS Intending purchasers will be asked to produce identification documentation at a later stage and we would ask for your co-operation in order that there will be no delay in agreeing the sale. 2. These particulars do not constitute part or all of an offer or contract. 3. The measurements indicated are supplied for guidance only and as such must be considered incorrect. Potential buyers are advised to recheck measurements before committing to any expense. 4. We have not tested any apparatus, equipment, fixtures, fittings or services and it is in the buyers interest to check the working condition of any appliances.

Connells Residential is registered in England and Wales under company number 1489613, Registered Office is Cumbria House, 16-20 Hockliffe Street, Leighton Buzzard, Bedfordshire, LU7 1GN. VAT Registration Number is 500 2481 05.

See all our properties at www.connells.co.uk | www.rightmove.co.uk | www.zoopla.co.uk

Property Ref: YAT308393 - 0008