



**Castlecombe Drive, London SW19 6RN**

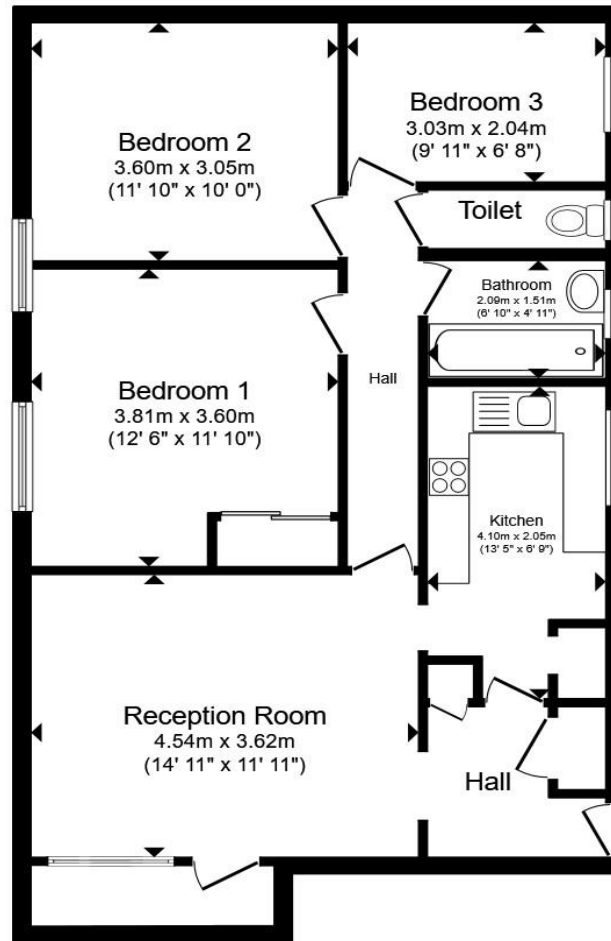
**welcome to**  
**Castlecombe Drive, London**

A spacious flat set on the third floor of this purpose-built block.

Offering three good size bedrooms which are serviced by a spacious bathroom and separate w/c, kitchen and large reception room with space for dining and doors leading to a private balcony.

Castlecombe Drive is ideally situated within 0.7 miles with its shopping and transport facilities including the District Line station. There are multiple bus routes via Parkside and Putney Heath as well as easy access to the A3 via Tibbets Corner. The open spaces of Wimbledon Common and Wimbledon Park, with their various recreational facilities are also within easy access.





### 3rd Floor

Total floor area 74.4 m<sup>2</sup> (801 sq.ft.) approx

This floor plan is for illustrative purposes only. It is not drawn to scale. Any measurements, floor areas (including any total floor area), openings and orientation are approximate. No details are guaranteed, they cannot be relied upon for any purpose and they do not form part of any agreement. No liability is taken for any error, omission or misstatement. A party must rely upon its own inspection(s). Powered by [www.propertybox.io](http://www.propertybox.io)



welcome to

## Castlecombe Drive, London

- Three Bedrooms
- Ample Storage Space Throughout
- Balcony
- No Chain
- Excellent Location for Southfields & Putney

Tenure: Leasehold EPC Rating: C

Council Tax Band: C Service Charge: 1000.00

Ground Rent: Ask Agent

This is a Leasehold property with details as follows; Term of Lease 125 years from 07 May 1986. Should you require further information please contact the branch. Please Note additional fees could be incurred for items such as Leasehold packs.

# £375,000



Please note the marker reflects the postcode not the actual property

**view this property online** [barnardmarcus.co.uk/Property/SFS106942](https://barnardmarcus.co.uk/Property/SFS106942)



Property Ref:  
SFS106942 - 0002

1. MONEY LAUNDERING REGULATIONS Intending purchasers will be asked to produce identification documentation at a later stage and we would ask for your co-operation in order that there is no delay in agreeing the sale. 2. These particulars do not constitute part or all of an offer or contract. 3. The measurements indicated are supplied for guidance only and as such must be considered incorrect. Potential buyers are advised to recheck measurements before committing to any expense. 4. We have not tested any apparatus, equipment, fixtures or services and it is in the buyers interest to check the working condition of any appliances. 5. Where an EPC, or a Home Report (Scotland only) is held for this property, it is available for inspection at the branch by appointment. If you require a printed version of a Home Report, you will need to pay a reasonable production charge reflecting printing and other costs. 6. We are not able to offer an opinion either written or verbal on the content of these reports and this must be obtained from your legal representative. 7. Whilst we take care in preparing these reports, a buyer should ensure that his/her legal representative confirms as soon as possible all matters relating to title including the extent and boundaries of the property and other important matters before exchange of contracts.



barnard marcus



**020 8874 4106**



[Southfields@barnardmarcus.co.uk](mailto:Southfields@barnardmarcus.co.uk)



245 Wimbledon Park Road, Southfields,  
LONDON, SW18 5RJ



**[barnardmarcus.co.uk](https://barnardmarcus.co.uk)**