

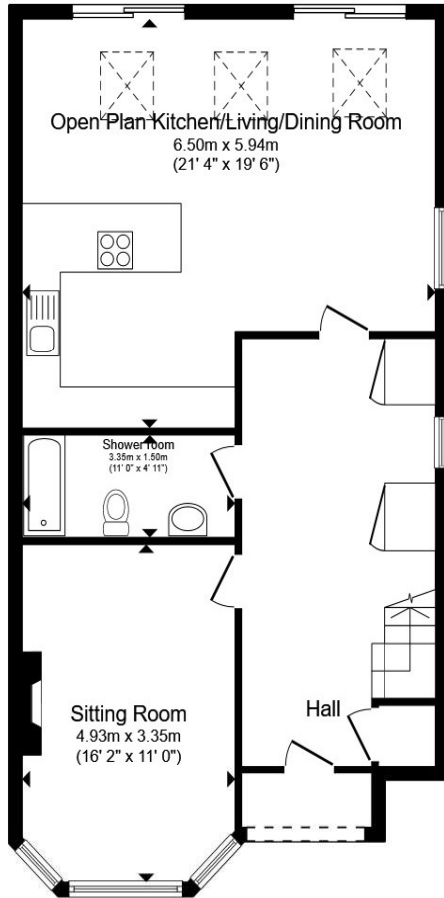


45 Park Avenue, Histon, Cambridge, CB24 9JU

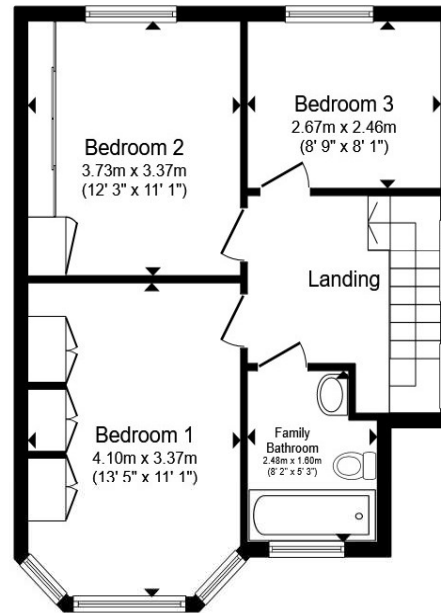
welcome to Park Avenue, Histon

A substantial three bedroom extended semi detached family home with a fabulous open plan kitchen/living/diner, off road parking and large well stocked garden close to the heart of village and all facilities and amenities.





Ground Floor



First Floor

Total floor area 128.2 m² (1,380 sq.ft.) approx

This floor plan is for illustrative purposes only. It is not drawn to scale. Any measurements, floor areas (including any total floor area), openings and orientation are approximate. No details are guaranteed, they cannot be relied upon for any purpose and they do not form part of any agreement. No liability is taken for any error, omission or misstatement. A party must rely upon its own inspection(s). Powered by www.focalagent.com



Accommodation -

Entrance Hall

Sitting Room

Shower Room

**Open Plan
Kitchen/Living/Diner**

Landing

Bedroom One

Bedroom Two

Bedroom Three

Bathroom

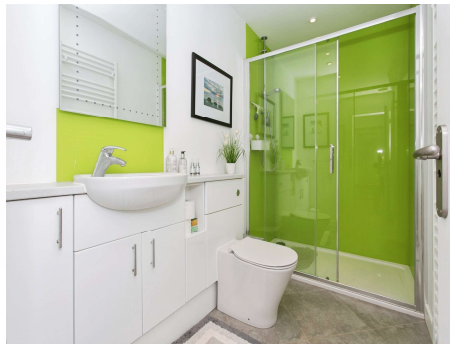
Outside

welcome to Park Avenue, Histon

- Extended Bay Fronted Semi Detached Family Home
- Open Plan Kitchen/Living/Diner with sliding Doors to the Garden
- Three Bedrooms
- Ground Floor Shower Room
- First Floor Family Bathroom

Tenure: Freehold EPC Rating: C
Council Tax Band: D

£650,000



Please note the marker reflects the postcode not the actual property

view this property online [sequencehome.co.uk/Property/HIS100230](https://www.sequencehome.co.uk/Property/HIS100230)



Property Ref:
HIS100230 - 0004

1. MONEY LAUNDERING REGULATIONS Intending purchasers will be asked to produce identification documentation at a later stage and we would ask for your co-operation in order that there is no delay in agreeing the sale. 2. These particulars do not constitute part or all of an offer or contract. 3. The measurements indicated are supplied for guidance only and as such must be considered incorrect. Potential buyers are advised to recheck measurements before committing to any expense. 4. We have not tested any apparatus, equipment, fixtures or services and it is in the buyers interest to check the working condition of any appliances. 5. Where an EPC, or a Home Report (Scotland only) is held for this property, it is available for inspection at the branch by appointment. If you require a printed version of a Home Report, you will need to pay a reasonable production charge reflecting printing and other costs. 6. We are not able to offer an opinion either written or verbal on the content of these reports and this must be obtained from your legal representative. 7. Whilst we take care in preparing these reports, a buyer should ensure that his/her legal representative confirms as soon as possible all matters relating to title including the extent and boundaries of the property and other important matters before exchange of contracts.



01223 214400



histon@tylers.net



19 High Street, CAMBRIDGE, Cambridgeshire,
CB24 9JD



[sequencehome.co.uk](https://www.sequencehome.co.uk)