



Connells

Sydnall Road
Coventry



Property Description

A well-presented mid-terrace property located in the popular area of Longford, ideal for first-time buyers or investors.

The ground floor comprises a welcoming lounge and a modern re-fitted kitchen, offering a practical, stylish space for everyday living and a fitted shower room. To the first floor are two bedrooms providing comfortable accommodation throughout.

Externally, the property benefits from a rear garden, perfect for relaxing or outdoor entertaining.

Conveniently situated close to local amenities, transport links and schools, this property represents an excellent opportunity.

Approach

Front door.

Lounge

Double glazed window to the front elevation and radiator.

Fitted Kitchen

Wall and base mounted units incorporating an inset single drainer sink unit with work surfaces and peel-and-stick tiles. Integrated electric oven and gas hob with cookerhood over, plumbing for automatic washing machine, space for domestic appliance, double glazed window to the rear elevation and door to the side elevation.

Fitted Shower Room

Tiled, comprising shower cubicle, wash hand basin, toilet, radiator and double glazed window to the rear elevation.

First Floor Landing

Doors to;

Bedroom One

Double glazed window to the front elevation and radiator.

Bedroom Two

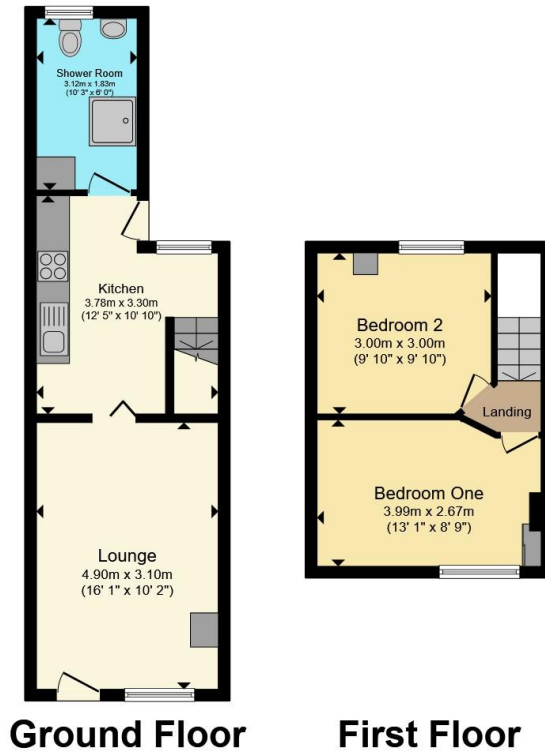
Double glazed window to the rear elevation and radiator.

Outside

Rear Garden

Paved and stoned with garden shed.





Total floor area 57.2 m² (616 sq.ft.) approx

This floor plan is for illustrative purposes only. It is not drawn to scale. Any measurements, floor areas (including any total floor area), openings and orientation are approximate. No details are guaranteed, they cannot be relied upon for any purpose and they do not form part of any agreement. No liability is taken for any error, omission or misstatement. A party must rely upon its own inspection(s). Powered by www.propertybox.io



To view this property please contact Connells on

T 02476 553 093
E coventry@connells.co.uk

38 New Union Street
 COVENTRY CV1 2HN

EPC Rating: E Council Tax
 Band: A

view this property online [connells.co.uk/Property/COV323830](https://www.connells.co.uk/Property/COV323830)

Tenure: Freehold



1. MONEY LAUNDERING REGULATIONS Intending purchasers will be asked to produce identification documentation at a later stage and we would ask for your co-operation in order that there will be no delay in agreeing the sale. 2. These particulars do not constitute part or all of an offer or contract. 3. The measurements indicated are supplied for guidance only and as such must be considered incorrect. Potential buyers are advised to recheck measurements before committing to any expense. 4. We have not tested any apparatus, equipment, fixtures, fittings or services and it is in the buyers interest to check the working condition of any appliances.

Connells Residential is registered in England and Wales under company number 1489613, Registered Office is Cumbria House, 16-20 Hockliffe Street, Leighton Buzzard, Bedfordshire, LU7 1GN. VAT Registration Number is 500 2481 05.

See all our properties at www.connells.co.uk | www.rightmove.co.uk | www.zoopla.co.uk

Property Ref: COV323830 - 0003