



Connells

Bayew House Warminster Road
South Newton Salisbury



Property Description

A well-proportioned detached four bedroom house set within a generous plot in South Newton. The property features a private driveway leading to a single garage, neatly bordered front garden, and a traditional façade enhanced by a covered entrance porch. Positioned adjacent to open green fields, the home enjoys a pleasant, semi-rural outlook.

Located in South Newton a charming village located just west of Salisbury in Wiltshire, offering a peaceful semi-rural lifestyle within easy reach of the city. Known for its attractive countryside surroundings and community feel, and local amenities including a primary school, village pub, and nearby rail links.

Entrance Hall

Access to lounge, dining room, utility area and cloakroom, stairs to first floor landing.

Dining Room

11' 3" x 9' 6" (3.43m x 2.90m)

Access to lounge, rear aspect over countryside.

Lounge

21' 11" x 11' 8" (6.68m x 3.56m)

With feature brick fireplace, mantle over and brick hearth with free standing fire unit.

Kitchen

11' 5" x 9' 8" (3.48m x 2.95m)

Comprising wall and base units with work surfaces over, drainer sink unit with mixer taps, inset hob unit with hood over, raised double oven, door to side and rear aspect over countryside.

Utility Room

9' 9" x 6' 9" (2.97m x 2.06m)

Comprising wall and base units with work surfaces over, space for two appliances under the work surface, space for fridge/freezer, open to kitchen, side aspect.

Cloakroom

Comprising wash hand basin and WC.

Galleried Landing

Storage cupboard, doors to all first floor rooms.

Bedroom One

11' 8" x 11' 5" (3.56m x 3.48m)

Open to shower en-suite, rear aspect with views over countryside.

Shower En-Suite

Comprising a shower cubicle with integrated shower over, wash hand basin with mixer taps and heated towel rail.

Bedroom Two

11' 8" x 10' 1" (3.56m x 3.07m)

Front aspect.

Bedroom Three

11' 5" x 8' 8" (3.48m x 2.64m)

Rear aspect with views over countryside.

Bedroom Four

10' 1" max x 8' 8" max (3.07m max x 2.64m max)

Front aspect.

Bathroom

Comprising a panel enclosed bath with mixer taps, shower over with glass screen, wash hand basin with mixer taps, heated towel rail and WC.

Outside

Rear Garden

Boasting far reaching countryside and river views this beautiful garden is mostly laid to lawn with mature hedges and seasonal flowers, perfect for entertaining and Alfresco dining in the Summer months. With elegant and tranquil setting by the water provides the peace and quiet you'd expect from this village setting of South Newton. Other features are an external light, outdoor tap, gated side access to driveway, raised beds.

Driveway

Parking to the front of the property.

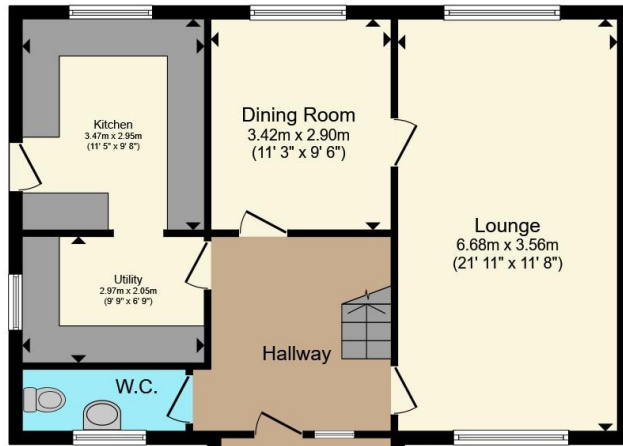
Garage

With up and over door, power and light.

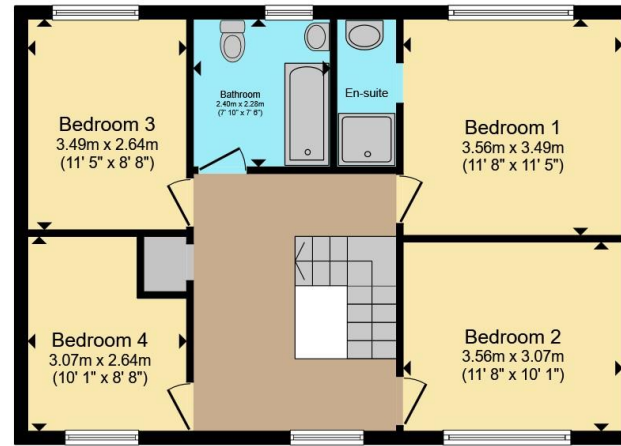








Ground Floor



First Floor

Total floor area 131.8 m² (1,419 sq.ft.) approx

This floor plan is for illustrative purposes only. It is not drawn to scale. Any measurements, floor areas (including any total floor area), openings and orientation are approximate. No details are guaranteed, they cannot be relied upon for any purpose and they do not form part of any agreement. No liability is taken for any error, omission or misstatement. A party must rely upon its own inspection(s). Powered by www.propertybox.io



To view this property please contact Connells on

T 01722 328 562
E salisbury@connells.co.uk

46-50 Castle Street
 Salisbury SP1 3TS

EPC Rating: D Council Tax
 Band: F

Tenure: Freehold

view this property online connells.co.uk/Property/SAL308450



1. MONEY LAUNDERING REGULATIONS Intending purchasers will be asked to produce identification documentation at a later stage and we would ask for your co-operation in order that there will be no delay in agreeing the sale. 2. These particulars do not constitute part or all of an offer or contract. 3. The measurements indicated are supplied for guidance only and as such must be considered incorrect. Potential buyers are advised to recheck measurements before committing to any expense. 4. We have not tested any apparatus, equipment, fixtures, fittings or services and it is in the buyers interest to check the working condition of any appliances.

Connells Residential is registered in England and Wales under company number 1489613, Registered Office is Cumbria House, 16-20 Hockliffe Street, Leighton Buzzard, Bedfordshire, LU7 1GN. VAT Registration Number is 500 2481 05.

See all our properties at www.connells.co.uk | www.rightmove.co.uk | www.zoopla.co.uk

Property Ref: SAL308450 - 0003