

for sale

offers in the region of **£270,000** Freehold



## Meeting Street Wednesbury WS10 7PW

Three-Bedroom Detached Property – Stylish Family Home

This beautifully presented three-bedroom detached property offers spacious and versatile living, making it an ideal home for families or those seeking extra space.



Residential Sales & Lettings | Mortgage Services |  
Conveyancing | Surveyors | Land & New Homes



# Property Details

## Entrance Porch

Side aspect double glazed window and door to entrance hall.

## Entrance Hall

Stairs to landing and radiator.

## Lounge 12' 9" x 17' 3" ( 3.89m x 5.26m )

Rear aspect double glazed window and patio doors.

## Dining Room

Front aspect double glazed window, radiator, laminate flooring and door to rear.

## Kitchen 9' 8" x 9' ( 2.95m x 2.74m )

Front aspect double glazed window, sink and drainer, wall and base units, space for appliances and extractor fan.

## Landing

Side aspect double glazed window and storage.

## Bedroom One 10' 3" x 10' ( 3.12m x 3.05m )

Rear aspect double glazed window and radiator.

## Bedroom Two 10' 2" x 9' 9" ( 3.10m x 2.97m )

Front aspect double glazed window and radiator.

## Bedroom Three 10' x 6' 11" ( 3.05m x 2.11m )

Rear aspect double glazed window and radiator.

## Bathroom

Front aspect double glazed window, tiled walls, radiator, wash hand basin with storage, shower cubicle, bath and radiator.

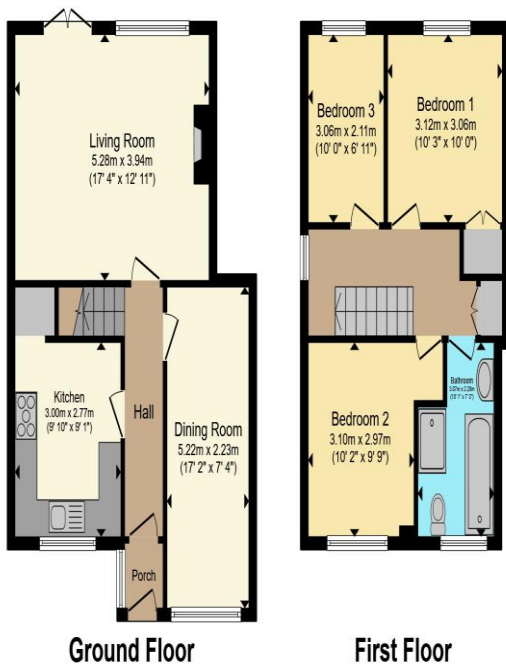
## Front Garden

Lawn area, block paved driveway with gate.

## Rear Garden

lawn and patio area.





Total floor area 93.7 m<sup>2</sup> (1,009 sq.ft.) approx

This floor plan is for illustrative purposes only. It is not drawn to scale. Any measurements, floor areas (including any total floor area), openings and orientation are approximate. No details are guaranteed, they cannot be relied upon for any purpose and they do not form part of any agreement. No liability is taken for any error, omission or misstatement. A party must rely upon its own inspection(s). Powered by www.propertybox.io



To view this property please contact Paul Dubberley on

**T 0121 505 3533**  
**E [wednesbury@pauldubberley.co.uk](mailto:wednesbury@pauldubberley.co.uk)**

97 Walsall Street  
 WEDNESBURY WS10 9BY

Property Ref: PWE104368 - 0004

Tenure:Freehold EPC Rating: C

Council Tax Band: D

1. MONEY LAUNDERING REGULATIONS Intending purchasers will be asked to produce identification documentation at a later stage and we would ask for your co-operation in order that there will be no delay in agreeing the sale. 2. These particulars do not constitute part or all of an offer or contract. 3. The measurements indicated are supplied for guidance only and as such must be considered incorrect. Potential buyers are advised to recheck measurements before committing to any expense. 4. We have not tested any apparatus, equipment, fixtures, fittings or services and it is in the buyers interest to check the working condition of any appliances.

Paul Dubberley is a trading name of Connells Residential which is registered in England and Wales under company number 1489613, Registered Office is Cumbria House, 16-20 Hockliffe Street, Leighton Buzzard, Bedfordshire, LU7 1GN. VAT Registration Number is 500 2481 05.

see all our properties at [www.pauldubberley.co.uk](http://www.pauldubberley.co.uk) | [www.rightmove.co.uk](http://www.rightmove.co.uk) | [www.zoopla.co.uk](http://www.zoopla.co.uk)