

for sale

£395,000



Nuthatch Drive Finberry Ashford TN25 7AA

A beautifully presented three-bedroom semi-detached home in the sought-after Finberry development.



Nuthatch Drive Finberry Ashford TN25 7AA

Ground Floor

Cloakroom/Wc

Study

Reception Room

Kitchen/Diner

Garden Room



First Floor

Bedroom 1

En-Suite

Bedroom 2

Bedroom 3

Bathroom

Outside

Rear Garden

Shed

Driveway

Car Port



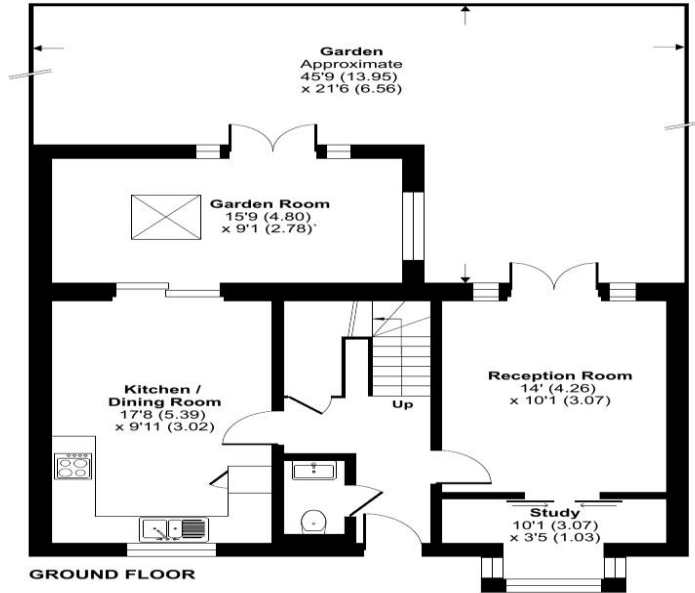
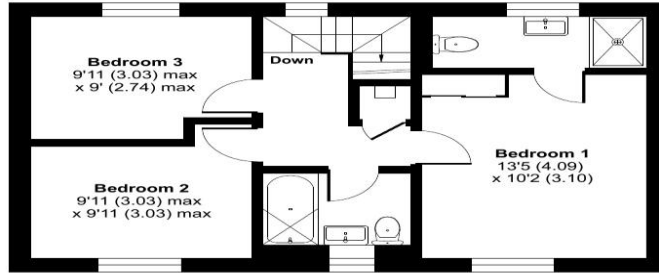
Nuthatch Drive, Finberry, Ashford, TN25

Approximate Area = 1152 sq ft / 107 sq m

Outbuilding = 44 sq ft / 4 sq m

Total = 1196 sq ft / 111 sq m

For identification only - Not to scale



 Floor plan produced in accordance with RICS Property Measurement 2nd Edition, Incorporating International Property Measurement Standards (IPMS2 Residential). © nichecom 2026. Produced for Flyp Homes Limited. REF: 1458522

To view this property please contact Connells on

T 01233 502020
E parkfarm@connells.co.uk

Unit 3 Moatfield Meadow Kingsnorth
ASHFORD TN23 3LU

Property Ref: PFM406883 - 0002

Tenure: Freehold EPC Rating: B

Council Tax Band: D

view this property online
connells.co.uk/Property/PFM406883



1. MONEY LAUNDERING REGULATIONS Intending purchasers will be asked to produce identification documentation at a later stage and we would ask for your co-operation in order that there will be no delay in agreeing the sale. 2. These particulars do not constitute part or all of an offer or contract. 3. The measurements indicated are supplied for guidance only and as such must be considered incorrect. Potential buyers are advised to recheck measurements before committing to any expense. 4. We have not tested any apparatus, equipment, fixtures, fittings or services and it is in the buyers interest to check the working condition of any appliances.

Connells Residential is registered in England and Wales under company number 1489613, Registered Office is Cumbria House, 16-20 Hockliffe Street, Leighton Buzzard, Bedfordshire, LU7 1GN. VAT Registration Number is 500 2481 05.

see all our properties at www.connells.co.uk | www.rightmove.co.uk | www.zoopla.co.uk