



Connells
connells.co.uk 01476 590 050
FOR SALE SIGNATURE PROPERTY

Connells

Southlands Drive
Grantham



Property Description

Connells are delighted to bring to the market this delightful and well-proportioned three-bedroom family home, offering generous living space across two floors and situated in a popular location. With a garage, two reception rooms, this property is ideal for couples, families, or anyone looking for a comfortable and versatile home.

The ground floor comprises a welcoming entrance hall with staircase rising to the first floor and doors leading to the lounge, kitchen and under stairs cupboard. To the front of the property is a bright and spacious lounge providing ample room for relaxing and entertaining. Adjacent to the lounge is a separate dining room, perfect for family meals. The kitchen, thoughtfully laid out to maximise space and functionality.

Upstairs, the first floor offers three well-proportioned bedrooms, including a generous principal bedroom and a second double bedroom, alongside a third bedroom which would make an ideal child's room, home office or guest room. A family bathroom completes the accommodation.

Externally, To the front there is a blocked paved driveway leading to the garage, metal gate leading to the rear garden. To the rear there is a private enclosed garden mainly laid to lawn with a patio area.

Viewings is highly recommended to fully appreciate this stunning home! Call Connells today 01476590050

Ground Floor

Entrance Hall

Entrance door to the front, doors leading to the lounge, kitchen, under stairs cupboard and stairs leading to the first floor.

Lounge

With a window to the front, carpet, coving to the ceiling.

Dining Room

With a window to the rear, carpet, radiator.

Kitchen

With a window to the rear, door leading to the side, range of wall and base units, built in oven, space for free standing appliances, space and plumbing for a washing machine, hob with extractor fan above.

First Floor

Landing

with doors leading to the three bedrooms, family bathroom and airing cupboard.

Bedroom One

With a window to the front, carpet and a radiator.

Bedroom Two

With a window to the rear, carpet, radiator and built in storage.

Bedroom Three

With a window to the front, radiator, carpet.

Bathroom

With two windows to the rear, W.C, wash hand basin with vanity units, p-shape bath with shower over.

Outside

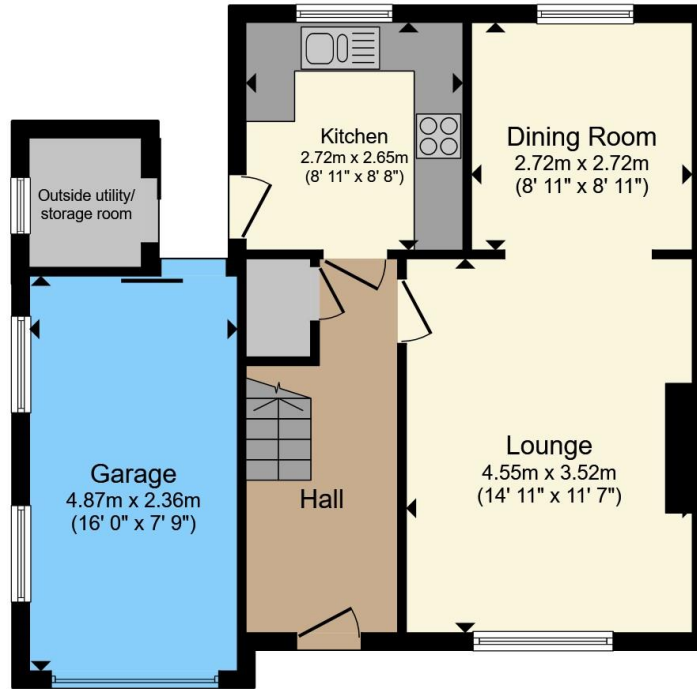
Garage

With up and over door,

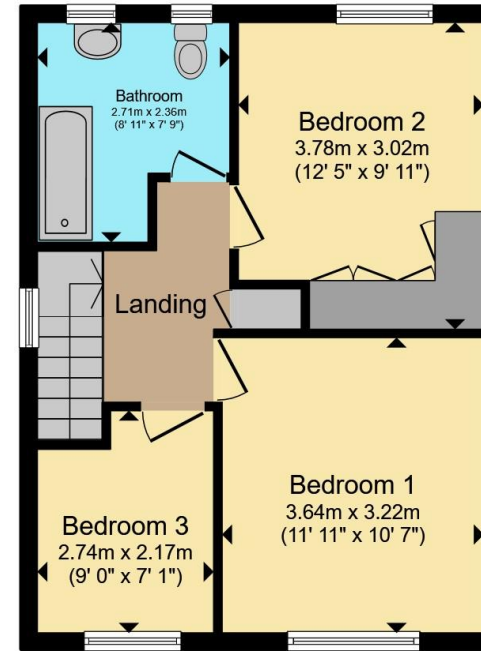








Ground Floor



First Floor

Total floor area 97.8 m² (1,053 sq.ft.) approx

This floor plan is for illustrative purposes only. It is not drawn to scale. Any measurements, floor areas (including any total floor area), openings and orientation are approximate. No details are guaranteed, they cannot be relied upon for any purpose and they do not form part of any agreement. No liability is taken for any error, omission or misstatement. A party must rely upon its own inspection(s). Powered by www.propertybox.io



To view this property please contact Connells on

T 01476 590 050
E grantham@connells.co.uk

2 Watergate
 GRANTHAM NG31 6PR

EPC Rating: C Council Tax Band: B

Tenure: Freehold

view this property online connells.co.uk/Property/GRM308978



1. MONEY LAUNDERING REGULATIONS Intending purchasers will be asked to produce identification documentation at a later stage and we would ask for your co-operation in order that there will be no delay in agreeing the sale. 2. These particulars do not constitute part or all of an offer or contract. 3. The measurements indicated are supplied for guidance only and as such must be considered incorrect. Potential buyers are advised to recheck measurements before committing to any expense. 4. We have not tested any apparatus, equipment, fixtures, fittings or services and it is in the buyers interest to check the working condition of any appliances.

Connells Residential is registered in England and Wales under company number 1489613, Registered Office is Cumbria House, 16-20 Hockliffe Street, Leighton Buzzard, Bedfordshire, LU7 1GN. VAT Registration Number is 500 2481 05.

See all our properties at www.connells.co.uk | www.rightmove.co.uk | www.zoopla.co.uk

Property Ref: GRM308978 - 0004