



Connells

Galapagos Grove
Bletchley Milton Keynes



Property Description

This fantastic two bedroom apartment is located in the popular modern estate of Newton Leys, Newton Leys offers excellent transport links to the A4146 and A5. It also offers easy access to the neighbouring towns of Leighton Buzzard & Bletchley both of which have mainline train stations. It is also just a short drive to the city of Milton Keynes and all of its amenities.

Internally, the property is presented in stunning condition throughout. Upon entering the spacious hallway, you'll find the generously sized second double bedroom to your right and the contemporary family bathroom to your left. Continuing down the hall, the impressive open-plan kitchen, dining, and living area is positioned on the right, featuring modern fitted appliances and a Juliet balcony that fills the space with natural light. At the end of the hallway, the spacious master bedroom benefits from a stylish en suite shower room, completing this beautifully presented home.

This apartment also benefits from its own allocated parking space set away from the main road in a private car park.

Entrance Hall

Wall mounted radiator and built-in storage cupboard. Doorways leading to lounge/kitchen, two bedrooms and a family bathroom.

Lounge/Kitchen

Enter from entrance hall. Generously sized lounge/kitchen room. UPVC double-glazed Juliette balcony to rear aspect. Wall mounted radiator. Kitchen benefits from a range of wall and base level units. Integrated appliances to include fridge freezer, washing machine, dishwasher, oven, four ring gas hob and an extractor hood. Recessed extractor fan.

Master Bedroom

Enter from entrance hall. A generously sized double bedroom benefitting from a wall mounted radiator, UPVC double-glazed window to rear aspect and fitted wardrobe. Doorway to the en-suite.

En-Suite

Enter from master bedroom. A three-piece suite comprising WC, pedestal wash hand basin and shower cubicle. Wall mounted radiator. Extractor fan.

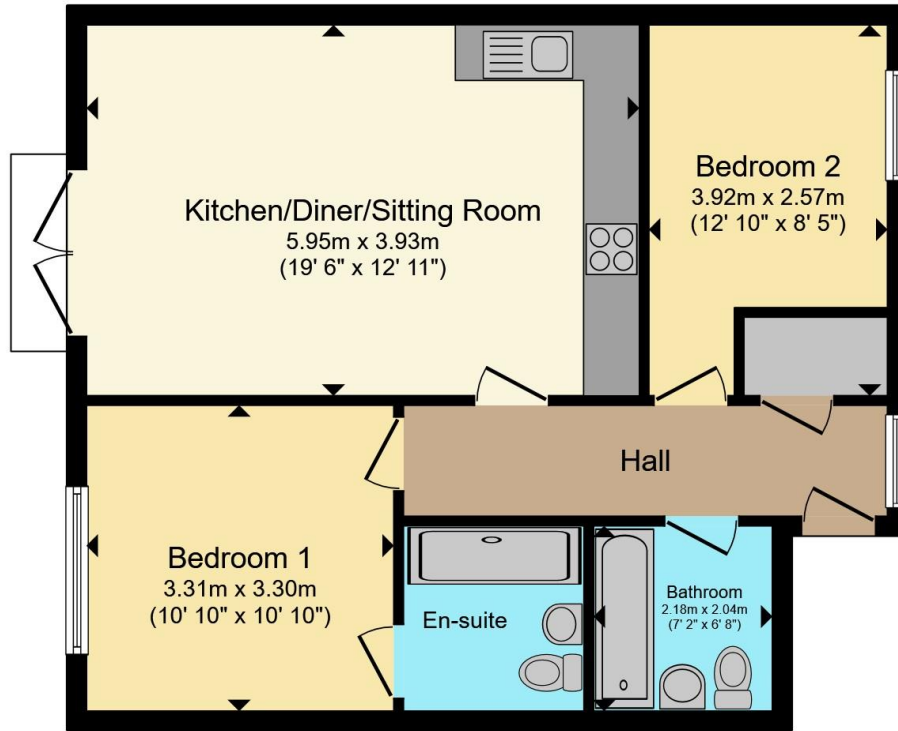
Bedroom Two

Enter from entrance hall. A double bedroom benefitting from UPVC double-glazed window to front aspect and wall mounted radiator.

Bathroom

Enter from entrance hall. A three-piece suite comprising WC, pedestal wash hand basin and a bathtub with an attached shower. Wall mounted radiator. Extractor fan.





Total floor area 61.2 m² (659 sq.ft.) approx

This floor plan is for illustrative purposes only. It is not drawn to scale. Any measurements, floor areas (including any total floor area), openings and orientation are approximate. No details are guaranteed, they cannot be relied upon for any purpose and they do not form part of any agreement. No liability is taken for any error, omission or misstatement. A party must rely upon its own inspection(s). Powered by www.propertybox.io



To view this property please contact Connells on

T 01908 375 241
E bletchley@connells.co.uk

188 Queensway Bletchley
 MILTON KEYNES MK2 2SW

EPC Rating: B Council Tax Band: B

Service Charge: 800.00 Ground Rent: Ask Agent

Tenure: Leasehold

view this property online connells.co.uk/Property/BLE312022

This is a Leasehold property. We are awaiting further details about the Term of the lease. For further information please contact the branch. Please note additional fees could be incurred for items such as Leasehold packs.



1. MONEY LAUNDERING REGULATIONS Intending purchasers will be asked to produce identification documentation at a later stage and we would ask for your co-operation in order that there will be no delay in agreeing the sale. 2. These particulars do not constitute part or all of an offer or contract. 3. The measurements indicated are supplied for guidance only and as such must be considered incorrect. Potential buyers are advised to recheck measurements before committing to any expense. 4. We have not tested any apparatus, equipment, fixtures, fittings or services and it is in the buyers interest to check the working condition of any appliances.

Connells Residential is registered in England and Wales under company number 1489613, Registered Office is Cumbria House, 16-20 Hockliffe Street, Leighton Buzzard, Bedfordshire, LU7 1GN. VAT Registration Number is 500 2481 05.

See all our properties at www.connells.co.uk | www.rightmove.co.uk | www.zoopla.co.uk

Property Ref: BLE312022 - 0002