



## Rosenburg Road, W3

£500,000

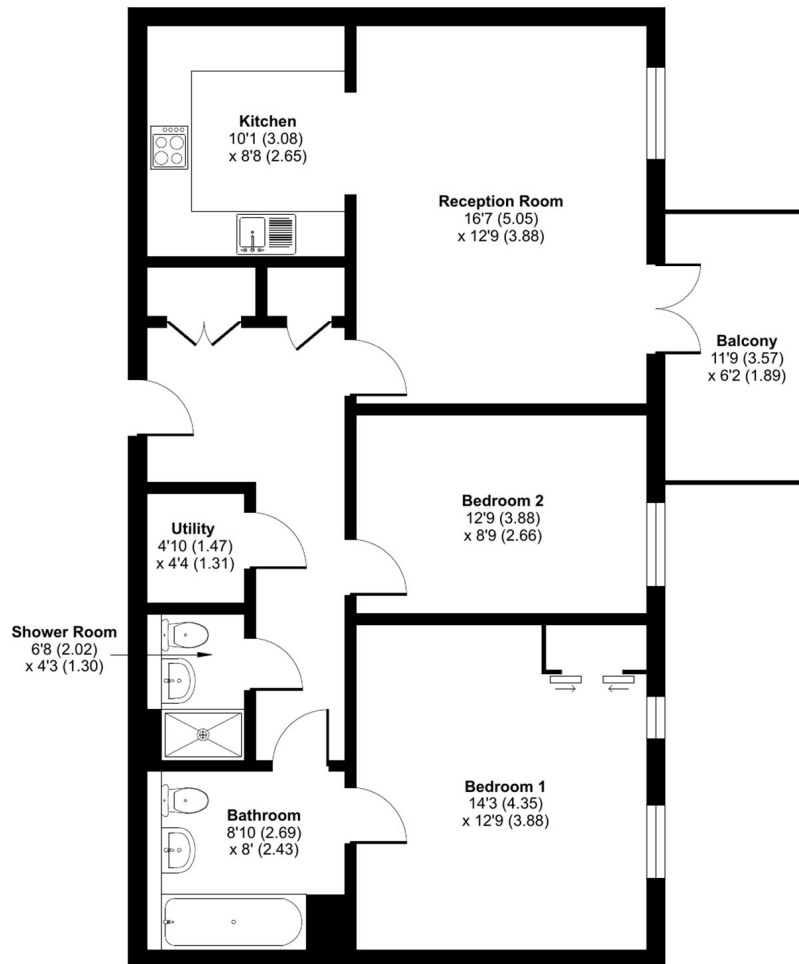
A modern fourth floor two bedroom, two bathroom apartment located in the popular Acton Gardens development on the borders of Chiswick. The property offers almost 900 sq.ft of accommodation and has a private balcony.

Rosenburg Road is within 500 metres of both Acton Town and South Acton stations both of which offer excellent access into town.

## Nowlan Court, Rosenberg Road, London, W3

Approximate Area = 889 sq ft / 82.5 sq m

For identification only - Not to scale



**FOURTH FLOOR**



Floor plan produced in accordance with RICS Property Measurement 2nd Edition, Incorporating International Property Measurement Standards (IPMS2 Residential). © nichecom 2025. Produced for L&Q Group. REF:1262963

Robertson Smith & Kempson Acton Sales  
137 High Street, Acton,  
London, W3 6LY  
020 8896 3996  
[actonsales@robertsonsmithandkempson.co.uk](mailto:actonsales@robertsonsmithandkempson.co.uk)

Energy Rating: B. We aim to make our particulars both accurate and reliable. However they are not guaranteed; nor do they form part of an offer or contract. If you require clarification on any points then please contact us, especially if you're traveling some distance to view. Please note that appliances and heating systems have not been tested and therefore no warranties can be given as to their good working order.