

**Shaw
& Co**
ESTATE
AGENTS

£315,000

Weavers Close

Isleworth, TW7 6ET

**Shaw
& Co**

PROPERTY SUMMARY

Shaw & Co present this well-presented semi-detached house, tucked away in a quiet cul-de-sac location. In our opinion, the property is ideally suited to first-time buyers looking to get on the property ladder or investors alike.

The accommodation comprises an entrance porch, a bright living room, a fitted kitchen. Upstairs, there is a generous double bedroom, and a bathroom/WC.

Further benefits include allocated parking and a private garden to the side of the property.

1



1



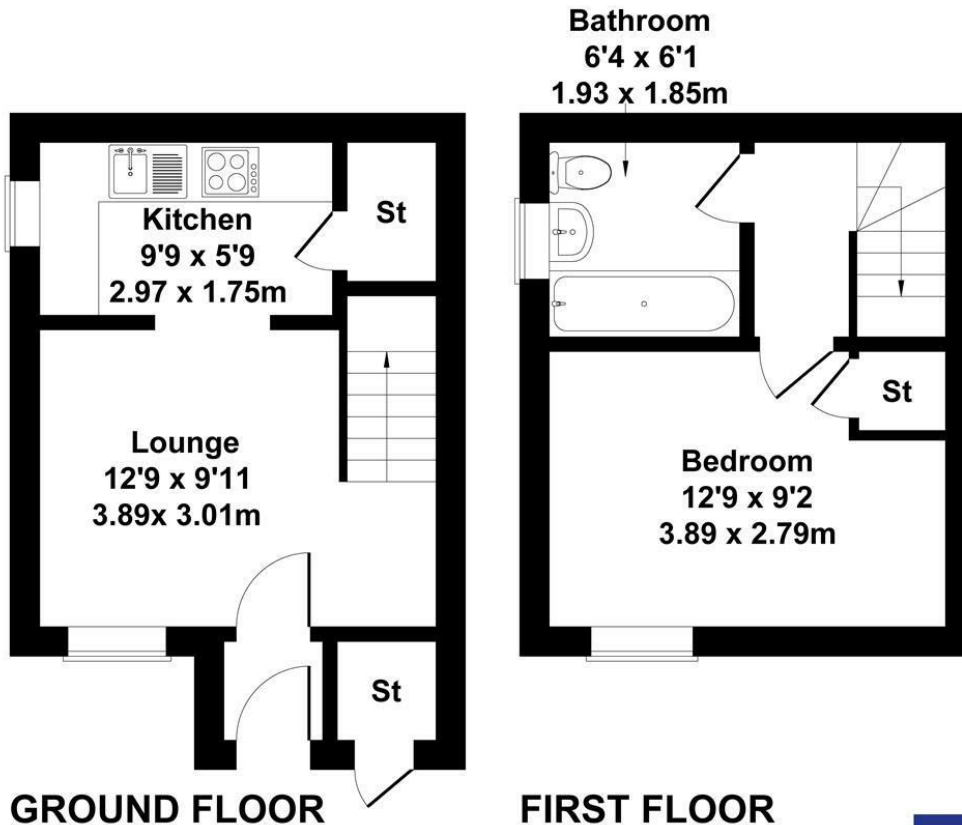
1





Weavers Close

Approximate Gross Internal Area
452 sq ft - 42 sq m



GROUND FLOOR

FIRST FLOOR

Not to Scale. Produced by The Plan Portal 2026
For Illustrative Purposes Only.



LOCAL AUTHORITY

Hounslow

TENURE

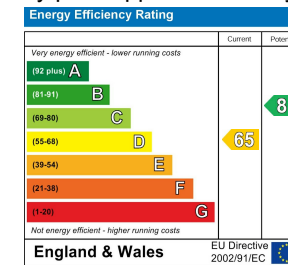
Freehold

COUNCIL TAX BAND

C

VIEWINGS

By prior appointment only



Agents Note: Whilst every care has been taken to prepare these particulars, they are for guidance purposes only. All measurements are approximate and are for general guidance purposes only and whilst every care has been taken to ensure their accuracy, they should not be relied upon and potential buyers/tenants are advised to recheck the measurements

Shaw & Co
ESTATE AGENTS

OFFICE ADDRESS

Whitton
Twickenham
TW2 7LT

OFFICE DETAILS

0208 894 3646
whitton@shawandcoestates.com