



Connells

Tower Close Tower Road
Bournemouth



Property Description

Connells Southbourne are pleased to present these refurbished properties in Tower Close, which are nearing completion and positioned at the front of the new development.

The accommodation comprises an entrance hallway, ground floor cloakroom, bay-fronted kitchen/diner and a separate living room with sliding doors opening onto the private rear garden. The first floor offers three double bedrooms and a contemporary family bathroom. Flooring is fitted throughout, while the property also benefits from modern kitchen finishes, gas central heating and EV charging provision. Ideally located for easy access to Boscombe, Bournemouth town centre, excellent transport links and the stunning local coastline.

Specification

Kitchen

- * Soft-close drawers and cupboard doors
- * Laminate square-edge worktops
- * Contemporary fitted kitchen
- * Flooring selection available - Please ask for more details

Bathroom

- * Bath with shower over
- * Glass shower screen
- * Wall-hung hand basin
- * Concealed cistern WC
- * Contemporary sanitaryware

Heating / Electrical

- * Glow-worm combi boiler
- * Double panel radiators
- * White sockets and switches
- * USB charging points to habitable rooms
- * TV points to principal rooms
- * Smoke, heat and CO alarms fitted

Interior Finish

- * White matte emulsion throughout
- * Modern neutral décor
- * Flooring fitted throughout

Sustainability

- * EV charging provision



Location

Tower Close, Tower Road, Boscombe, Bournemouth, Dorset

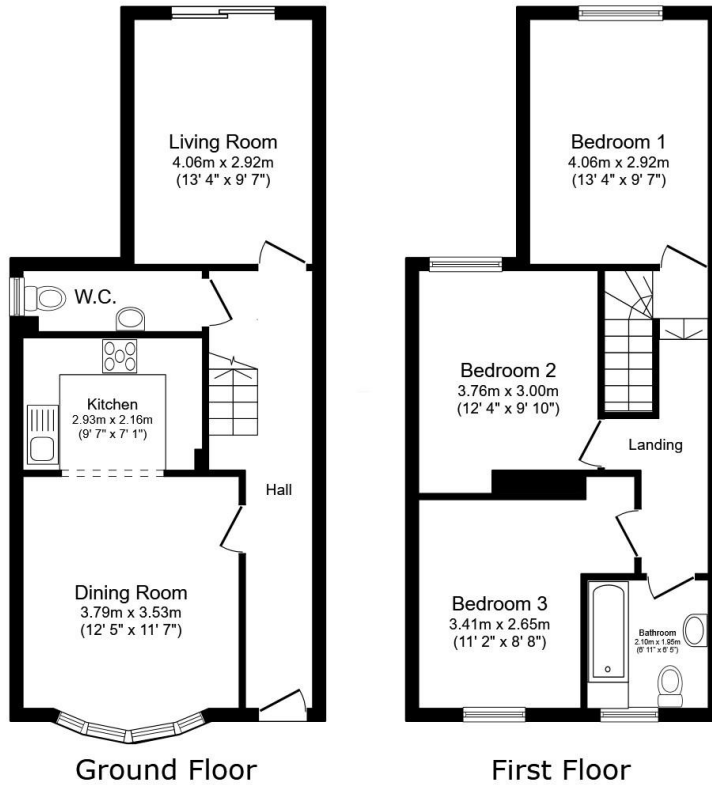
Tower Close enjoys a convenient setting within the popular Boscombe district of Bournemouth, close to a range of shops, supermarkets, cafés and leisure facilities.

The award-winning sands of Boscombe Beach are nearby, along with the stunning Dorset coastline, ideal for walking, cycling and water sports.

Excellent transport links include Bournemouth Railway Station with direct services to London Waterloo, while the A338 provides swift road access to the M27 and surrounding areas.

Agents Note;

Please note that images used may be computer generated and/or from a show-home by the developer and are meant for guidance only. Images are general of the development and may not relate to your chosen Plot - clarification should be sought from our sales team.



This floor plan is for illustrative purposes only. It is not drawn to scale. Any measurements, floor areas (including any total floor area), openings and orientations are approximate. No details are guaranteed, they cannot be relied upon for any purpose and do not form any part of any agreement. No liability is taken for any error, omission or misstatement. A party must rely upon its own inspection(s). Powered by www.Propertybox.io

To view this property please contact Connells on

T 01202 423 281
E southbourne@connells.co.uk

73 Southbourne Grove
 BOURNEMOUTH BH6 3QU

EPC Rating:
 Exempt

view this property online connells.co.uk/Property/SBN306635

Tenure: Freehold



1. MONEY LAUNDERING REGULATIONS Intending purchasers will be asked to produce identification documentation at a later stage and we would ask for your co-operation in order that there will be no delay in agreeing the sale. 2. These particulars do not constitute part or all of an offer or contract. 3. The measurements indicated are supplied for guidance only and as such must be considered incorrect. Potential buyers are advised to recheck measurements before committing to any expense. 4. We have not tested any apparatus, equipment, fixtures, fittings or services and it is in the buyers interest to check the working condition of any appliances.

Connells Residential is registered in England and Wales under company number 1489613, Registered Office is Cumbria House, 16-20 Hockliffe Street, Leighton Buzzard, Bedfordshire, LU7 1GN. VAT Registration Number is 500 2481 05.

See all our properties at www.connells.co.uk | www.rightmove.co.uk | www.zoopla.co.uk

Property Ref: SBN306635 - 0003