



Stephenson Close, Yaxley Peterborough
Offers in Excess of **£450,000** **Freehold**

**Sharman
Quinney**

Key Features



- Extended Detached Family Home
- Five Bedrooms and En Suite Shower Room
- Three Reception Rooms
- Kitchen/Breakfast Room
- Downstairs Cloakroom

Located in a quiet Cul-De-sac within a popular area Yaxley Village which is in easy access to the local shops, schools and the A1, this Detached Family Home benefits from having solar panel panels with feed in tariff and home batteries also wall mounted air conditioning units, in brief the accommodation comprises of Reception Hall with stairs to the first floor landing and doors giving access to the Two Piece Downstairs Cloakroom, Study or Play Room, Lounge with an air condition unit and a bay window to the front, door to the extended Dining Room with a door to the rear garden, Kitchen/Breakfast Room is fitted with a range of base and eye level units, cupboards and drawers, worktop space, one and a quarter single drainer sink unit, built-in double electric oven, gas hob, plumbing for a dishwasher, space for fridge/freezer, door to the Utility Room with



worktop space, single drainer sink unit, plumbing for a washing machine, space for a tumble dryer, door to the rear garden. Upstairs First Floor Landing has doors to, the Five Bedrooms, Three Piece Family Bathroom, bedroom 1 benefits from a air conditioning unit and a door to the Three Piece En-Suite Shower Room, Outside set back from the main road the frontage is open plan, double width driveway provides Off Road Parking and leads to the Double Garage with two metal up and over doors, light and power connected, courtesy door to the nice size Enclosed Rear Garden which is laid mainly to lawn with an extensive patio seating area. This home will also be offered with a Gas Safe Certificate and EICR Certificate.

Reception Hall:

Downstairs Cloakroom - 6' x 2'7"

Study - 9'7"max 7'3"max

Lounge - 15'2" x 12'6" (excluding bay window)

Extended Dining Room - 14'5" x 10'7"

Kitchen/Breakfast Room - 11'6" x 10'9"

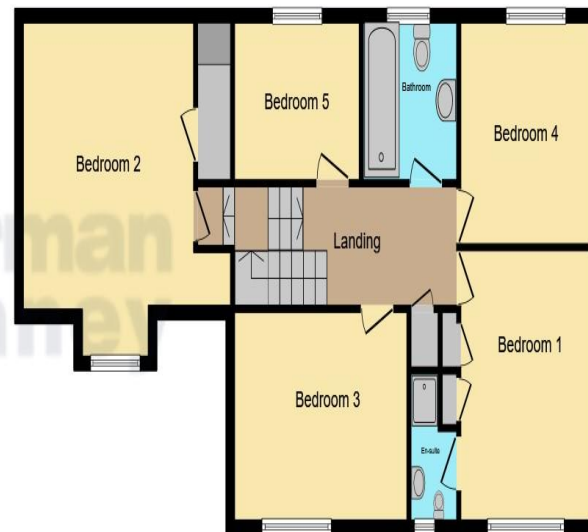
Utility Room - 8' x 5'2"

First Floor Landing:





Ground Floor



First Floor

Bedroom 1 - 13'9" x 10'8"

En-Suite Shower Room - 5'5" x 5'3" (excluding shower cubicle)

Bedroom 2 - 11'3" x 10'8"

Bedroom 3 - 11'9" x 10'9"

Bedroom 4 - 10'2" x 8'2"

Bedroom 5 - 16'9"max 11'1"max (excluding dormer window/including recess)

Family Bathroom - 8'2"max x 7"max

Double Garage:

This floor plan is for illustrative purposes only. It is not drawn to scale. Any measurements, floor areas (including any total floor area), openings and orientation are approximate. No details are guaranteed, they cannot be relied upon for any purpose and they do not form part of any agreement. No liability is taken for any error, omission or misstatement. A party must rely upon its own inspection(s). Powered by www.focalagent.com

To view this property call Sharman Quinney on:
01733 245400

Selling your property?

Contact us to arrange a **FREE** home valuation.

 01733 245400

 Unit 19 Maltings Square, Broadway Shopping Centre, Yaxley, Cambridgeshire, PE7 3EW

 yaxley@sharmanquinney.co.uk

 www.sharmanquinney.co.uk



 SCAN ME



Sharman Quinney Holdings Limited is registered in England and Wales under company number 4174227, Registered Office is Cumbria House, 16-20 Hockliffe Street, Leighton Buzzard, Bedfordshire, LU7 1GN. VAT Registration Number is 500 2481 05.

1: These particulars do not constitute part or all of an offer or contract. 2: The measurements indicated are supplied for guidance only and as such must be considered incorrect. 3: Potential buyers are advised to recheck the measurements before committing to any expense. 4: Sharman Quinney has not tested any apparatus, equipment, fixtures, fittings or services and it is the buyers interests to check the working condition of any appliances. 5: Sharman Quinney has not sought to verify the legal title of the property and buyers must obtain verification from their legal representative. 6: Intending purchasers will be asked to produce identification documentation at a later stage and we would ask your co-operation in order that there will be no delay in agreeing the sale. Ref: YAX203805 - 0011

