



Oak Grove, NW2

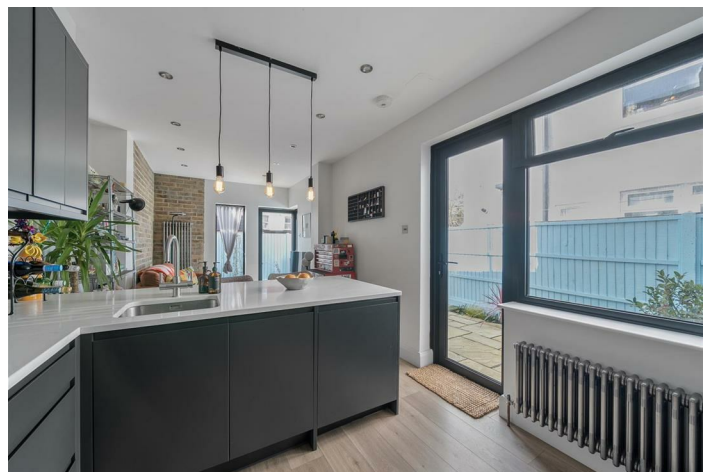
Leasehold - £475,000

For Sale solely via Camerons Stiff & Co.

A contemporary and stylish two bedroom apartment situated on the Ground Floor of an Edwardian terraced house. The listing offers an exceptional opportunity to acquire a well proportioned flat with private outside space.

The kitchen space / diner has been done to a high specification and boasts a distinctly sociable and pragmatic arrangement. Sliding doors at the rear open up to a private patio garden. Both bedrooms are generous.

Positioned in the ever-popular Cricklewood enclave, the flat is within walking distance of a variety of cafes, shops, bars and restaurants. Queen's Park, West Hampstead and Kensal Rise are a short distance away. The flat is close to the Cricklewood Thameslink station, providing easy access to central London.



020 7328 2828

enquiries@cameronsstiff.co.uk

cameronsstiff.co.uk





Oak Grove, London, NW2

Approximate Area = 567 sq ft / 52.6 sq m

For identification only - Not to scale



EPC: C

Ref: 19621725



Floor plan produced in accordance with RICS Property Measurement 2nd Edition, Incorporating International Property Measurement Standards (IPMS2 Residential). © ntechcom 2026. Produced for Camerons Stiff & Co. REF: 1429253

