



Bridge House Langtoft Fen, Langtoft Peterborough  
**£440,000 Freehold**

**Sharman  
Quinney**

# Key Features



- Detached Bungalow
- Three Bedrooms
- Kitchen/Dining Room
- Rural Location
- Garage

Accommodation Includes

Front door to:

Entrance Hall

Lounge

4.70m x 3.59m (15'5" x 11'9"). Window to front radiator, feature brick fire place.

Kitchen Diner

6.34m x 3.35m (20'9" x 11'). Range of base and eye level units with worktops over, space for fridge freezer, electric oven, hob and extractor, plumbing for washing machine, window to rear, sink with mixer taps, French door leading to:

Conservatory



Brick built and upvc construction with insulated roof.

Bedroom One  
3.48m x 3.65m (11'5" x 11'11"). Window to front, radiator.

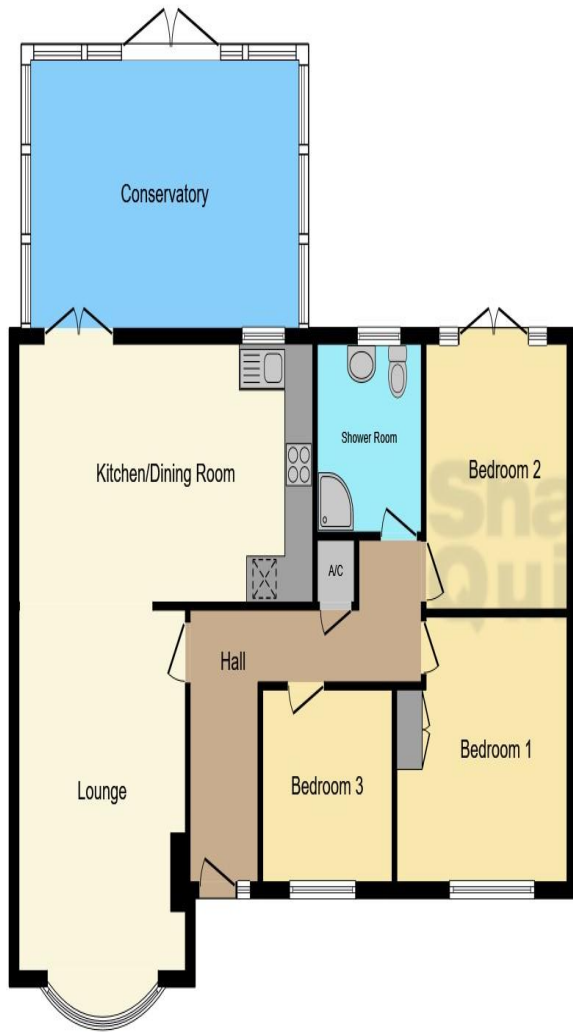
Bedroom Two  
3.09m x 3.60m (10'1" x 11'9"). Radiator, French door to rear aspect.

Bedroom Three  
2.44m x 2.86m (8' x 9'4"). Window to front, radiator.

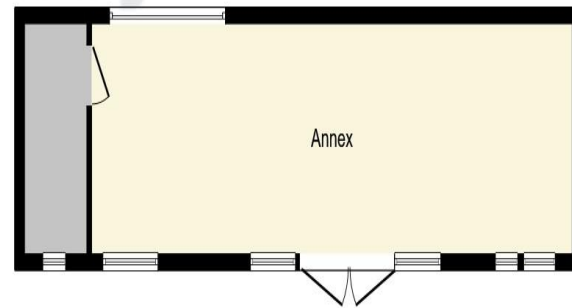
Bathroom  
Comprising corner bath with shower over, pedestal wash hand basin, wc, window to rear.

Outside  
To the rear the spacious garden is astro turfed with patio area. A workshop with solar panels and measuring 11.43m x 2.95m has been converted into a bar/games room and houses the water softening system and air heating system. To the rear there is a garage with electric roller door and workshop and an additional storage shed with power and light. To the front the area is turfed and to the side there are double electric gates with driveway leading to the rear.





**Ground Floor**



**First Floor**

This floor plan is for illustrative purposes only. It is not drawn to scale. Any measurements, floor areas (including any total floor area), openings and orientation are approximate. No details are guaranteed, they cannot be relied upon for any purpose and they do not form part of any agreement. No liability is taken for any error, omission or misstatement. A party must rely upon its own inspection(s). Powered by [www.focalagent.com](http://www.focalagent.com)

To view this property call Sharman Quinney on:  
**01778 343322**

# Selling your property?

Contact us to arrange a **FREE** home valuation.

 01778 343322

 25 Market Place, Market Deeping,  
PETERBOROUGH, Cambridgeshire, PE6 8EA

 marketdeeping@sharmanquinney.co.uk

 [www.sharmanquinney.co.uk](http://www.sharmanquinney.co.uk)



 SCAN ME



Sharman Quinney Holdings Limited is registered in England and Wales under company number 4174227, Registered Office is Cumbria House, 16-20 Hockliffe Street, Leighton Buzzard, Bedfordshire, LU7 1GN. VAT Registration Number is 500 2481 05.

1: These particulars do not constitute part or all of an offer or contract. 2: The measurements indicated are supplied for guidance only and as such must be considered incorrect. 3: Potential buyers are advised to recheck the measurements before committing to any expense. 4: Sharman Quinney has not tested any apparatus, equipment, fixtures, fittings or services and it is the buyers interests to check the working condition of any appliances. 5: Sharman Quinney has not sought to verify the legal title of the property and buyers must obtain verification from their legal representative. 6: Intending purchasers will be asked to produce identification documentation at a later stage and we would ask your co-operation in order that there will be no delay in agreeing the sale. Ref: MRD204218 - 0006

