






**SHEFFIELD TERRACE LONDON W8**  
£19,000 PER MONTH AVAILABLE 28/05/2026

**Hamptons**  
THE HOME EXPERTS

# { THE PARTICULARS

Sheffield Terrace London W8

£19,000 Per Month  
Furnished

-  5 Bedrooms
-  4 Bathrooms
-  1 Reception

## Features

- Recently Refurbished, - Eat-in Kitchen, - Large Principle suite, - Roof Terrace, - Air Conditioning, - Wood Floors

## Council Tax

Council Tax Band C

Hamptons  
8 Hornton Street  
Kensington, London, W8 4NW  
020 7937 9372  
KensingtonLettings@hamptons.co.uk  
www.hamptons.co.uk

# { A STUNNING TOWNHOUSE IN THE HEART OF KENSINGTON

## The Property

A stunning spacious five bedroom terraced house arranged over five floors, offering lots of storage space, abundance of natural light and multiple terraces. This beautifully presented town house property includes high ceilings, generous living space, modern finishes and bright interiors throughout. The ground floor features a welcoming reception room leading to a dining area and terrace, the lower ground floor includes two bedrooms, a utility room, shower room and access to a private patio. On the first floor, there is a large principle bedroom with access to a private balcony, along with a family bathroom and additional study area. The second floor offers two further double bedrooms, a study and bathroom, plus a terrace providing outdoor space and light. The top floor includes a bright double bedroom with its own bathroom and generous storage. Offered furnished

## Location

Sheffield Terrace is just off Kensington Church Street, moments from the boutiques, cafés and of Kensington Gardens and Holland Park are within easy reach. Excellent transport links of High Street Kensington (Circle and District lines).and Notting Hill Gate(Circle, District and Central lines).



# SHEFFIELD TERRACE

Approximate Gross Internal Area (excluding void)

Lower Ground floor = 916 sq. ft. (85.1 sq. m.)

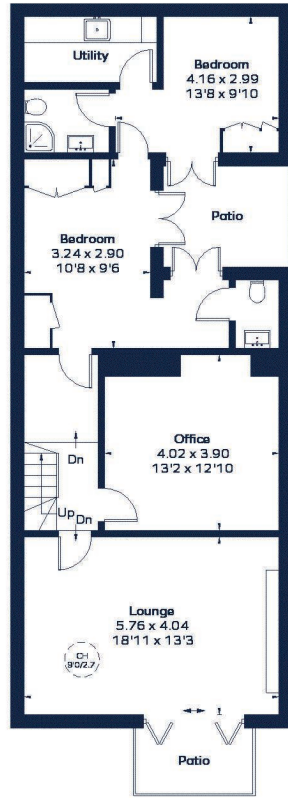
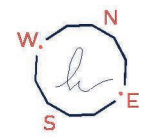
Ground floor = 904 sq. ft. (84.0 sq. m.)

First floor = 652 sq. ft. (60.6 sq. m.)

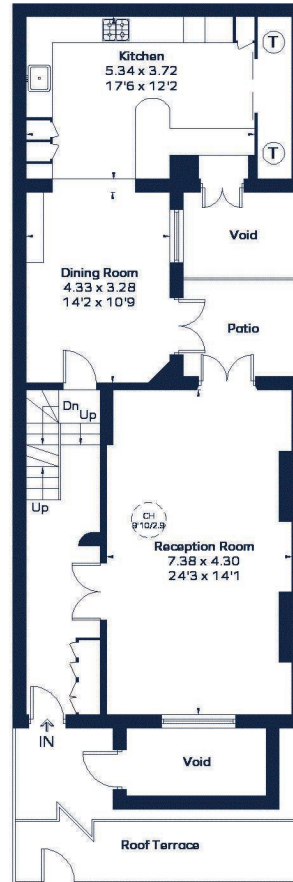
Second floor = 634 sq. ft. (58.9 sq. m.)

Third floor = 412 sq. ft. (38.3 sq. m.)

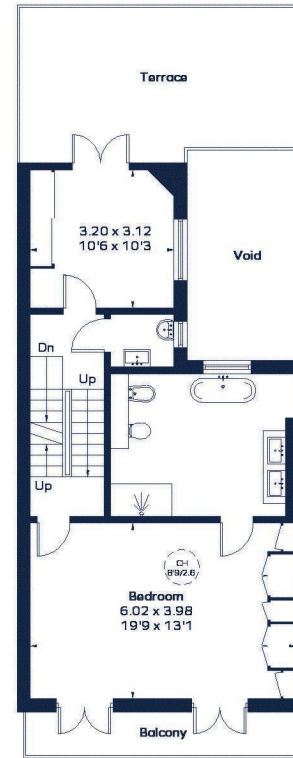
Total = 3518 sq. ft. (326.9 sq. m.)



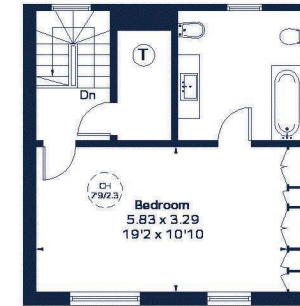
Lower Ground Floor



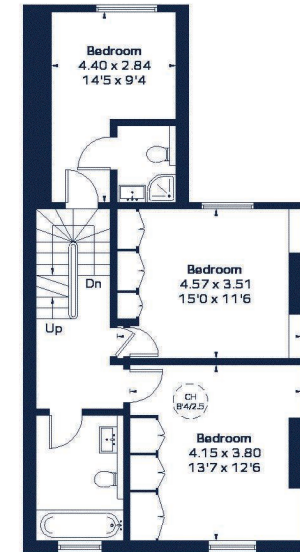
Ground Floor



First Floor



Third Floor



Second Floor

CH 910/2.9 - Ceiling Height

This plan is for layout guidance only. Not drawn to scale unless stated. Windows and door openings are approximate. Whilst every care is taken in the preparation of this plan, please check all dimensions, shapes and compass bearings before making any decisions reliant upon them. ID 1250516

### For Clarification

We wish to inform prospective tenants that we have prepared these particulars as a general guide and they have been confirmed as accurate by the landlord. We have not verified permissions, nor carried out a survey, tested the services, appliances and specific fittings. Room sizes are approximate and measurement figures rounded: they are taken between internal wall surfaces and therefore include cupboards/shelves, etc. Accordingly, they should not be relied upon for

carpets and furnishings. It should also be noted that all fixtures and fittings, carpeted, curtains/blinds, kitchen equipment and garden statuary, whether fitted or not, are deemed removable by the landlord unless specifically itemised with these particulars. Please enquire in office or on our website for details on holding deposit and tenancy deposit figures.

