



Connells

Wilberforce Road
Peterborough



Property Description

Situated in the sought-after New England area, this attractive three-bedroom semi-detached property offers comfortable and well-balanced accommodation arranged over two floors, making it an ideal choice for families, first-time buyers, or those seeking a well-located home.

The ground floor opens into a central hallway providing access to all principal rooms. To the front of the property is a spacious living room, offering a bright and welcoming area ideal for everyday living and entertaining. To the rear, the fitted kitchen is thoughtfully arranged with ample worktop and cupboard space and benefits from access to a convenient ground-floor cloakroom. The hallway also provides access to the staircase leading to the first floor.

On the first floor, the property offers three well-proportioned bedrooms, including a generous main bedroom, a comfortable second double bedroom, and a third bedroom suitable as a child's room, home office, or guest space. A family bathroom is accessed from the landing and serves all bedrooms.

Externally, the property boasts a spacious rear garden, providing an excellent outdoor space for relaxation, family activities, or entertaining. The garden also benefits from a useful storage room and access to a garage, offering practical storage and parking options. To the front of the property, an enclosed driveway provides secure off-road parking and enhances the overall convenience of the home.

Entrance Hall

Door to front.

Cloakroom

Window to side, WC, wash hand basin.

Lounge

Window to front, electric feature fireplace.

Kitchen

Window to rear, pantry, high and low level storage with worktops over, integrated oven with gas hob and hood, fridge/freezer.

First Floor

Bedroom One

Window to rear, three-door wardrobe, storage cupboard.

Bedroom Two

Window to front.

Bedroom Three

Window to front, storage cupboard.

Shower Room

Window to rear, shower cubicle with rainfall shower and glass screen, tiled walls, WC, wash hand basin.

Outside

Rear Garden

Laid to lawn, access to front, garage.

Store Room

8' x 5' 7" (2.44m x 1.70m)

Brick built.

Garage

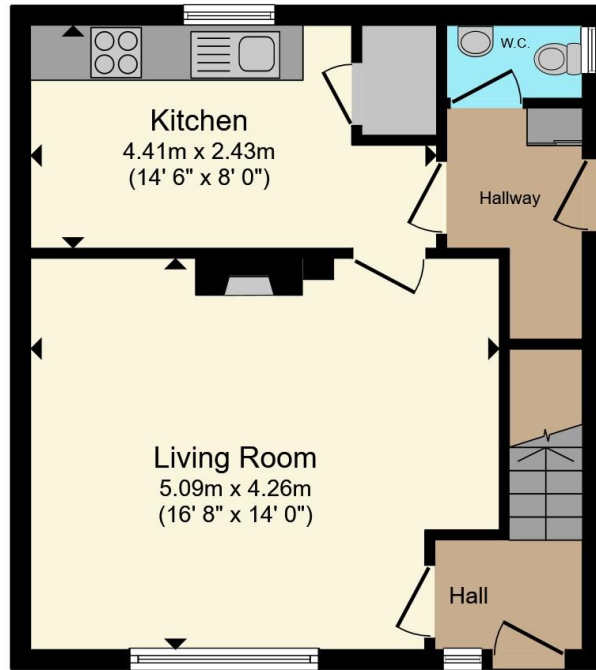
16' 1" x 8' 1" (4.90m x 2.46m)

Up and over door.

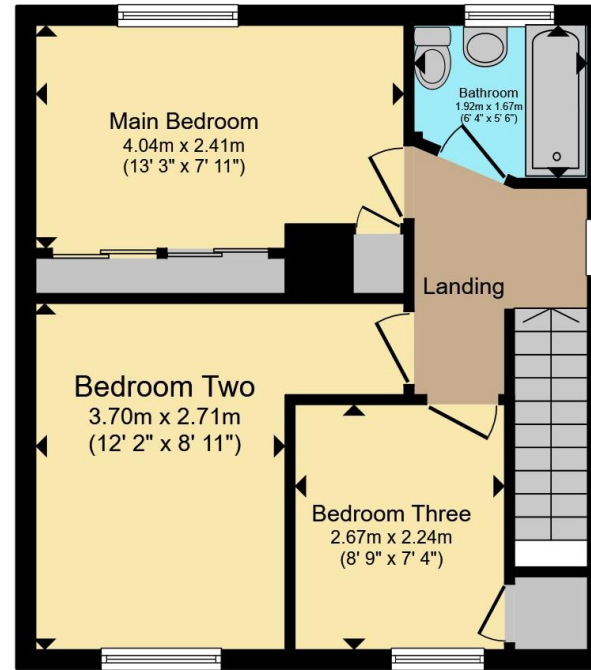








Ground Floor



First Floor

Total floor area 81.3 m² (875 sq.ft.) approx

This floor plan is for illustrative purposes only. It is not drawn to scale. Any measurements, floor areas (including any total floor area), openings and orientation are approximate. No details are guaranteed, they cannot be relied upon for any purpose and they do not form part of any agreement. No liability is taken for any error, omission or misstatement. A party must rely upon its own inspection(s). Powered by www.propertybox.io



To view this property please contact Connells on

T 01733 314 775
E peterborough@connells.co.uk

14 Cowgate
 PETERBOROUGH PE1 1NA

EPC Rating: C Council Tax Band: B

Tenure: Freehold

view this property online connells.co.uk/Property/PBO312660



1. MONEY LAUNDERING REGULATIONS Intending purchasers will be asked to produce identification documentation at a later stage and we would ask for your co-operation in order that there will be no delay in agreeing the sale. 2. These particulars do not constitute part or all of an offer or contract. 3. The measurements indicated are supplied for guidance only and as such must be considered incorrect. Potential buyers are advised to recheck measurements before committing to any expense. 4. We have not tested any apparatus, equipment, fixtures, fittings or services and it is in the buyers interest to check the working condition of any appliances.

Connells Residential is registered in England and Wales under company number 1489613, Registered Office is Cumbria House, 16-20 Hockliffe Street, Leighton Buzzard, Bedfordshire, LU7 1GN. VAT Registration Number is 500 2481 05.

See all our properties at www.connells.co.uk | www.rightmove.co.uk | www.zoopla.co.uk

Property Ref: PBO312660 - 0004