



Connells

Captains Place
Southampton

Captains Place Southampton SO14 3TF

for sale
£270,000



Property Description

A central two-bedroom freehold house which benefits from approximately 74 m² accommodation, well-maintained garden, off road parking for two cars and is only a short stroll away from Ocean Village Marina and Oxford Street. When you enter the home, you are welcomed to a convenient porch with storage for those muddy boots and raincoats. On the ground floor you'll discover a welcoming living room with modern carpets which flows through to the kitchen and dining area split by an archway. The kitchen benefits from copious amount of storage and access to the private garden.

On the first floor landing, you will find a handy storage cupboard and a family bathroom. Further benefits are two double bedrooms with both having the added benefit of built-in wardrobes and an additional bathroom. Viewing is certainly advised to appreciate all aspects of what this home has to offer inside and out.

Captains Place is located 0.7 miles from an energetic city centre, 25 minute walk to Southampton Train Station and is concealed within an orderly court yard style cul-de-sac. The location is within a short walk of an array of local amenities and also within the school catchment areas of St John's Primary/Nursery School and the outstanding Ofsted rated St Anne's Catholic School.

Hallway

Living Room

13' 1" x 12' 4" (3.99m x 3.76m)

Dining Room

10' 10" x 7' 1" (3.30m x 2.16m)

Kitchen

10' 11" x 7' 7" (3.33m x 2.31m)

Stairs Leading To First Floor

Bedroom One

10' 6" x 8' 10" (3.20m x 2.69m)

Bedroom Two

9' 11" x 7' 3" (3.02m x 2.21m)

Main Bathroom

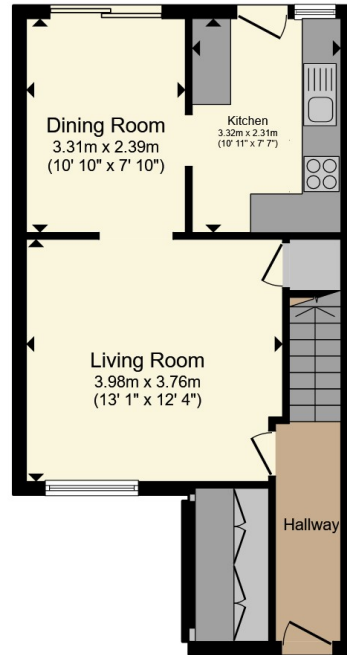
6' 6" x 6' 1" (1.98m x 1.85m)

Bathroom Two

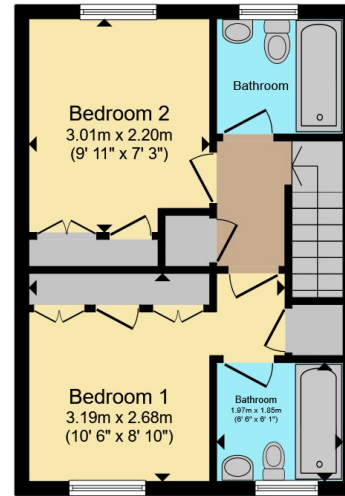








Ground Floor



First Floor

Total floor area 76.2 m² (820 sq.ft.) approx

This floor plan is for illustrative purposes only. It is not drawn to scale. Any measurements, floor areas (including any total floor area), openings and orientation are approximate. No details are guaranteed, they cannot be relied upon for any purpose and they do not form part of any agreement. No liability is taken for any error, omission or misstatement. A party must rely upon its own inspection(s). Powered by www.propertybox.io



To view this property please contact Connells on

T 02380 789 351
E shirley@connells.co.uk

409 Shirley Road Shirley
 SOUTHAMPTON SO15 3JD

EPC Rating: C Council Tax
 Band: C

Tenure: Freehold

view this property online connells.co.uk/Property/SSR312734



1. MONEY LAUNDERING REGULATIONS Intending purchasers will be asked to produce identification documentation at a later stage and we would ask for your co-operation in order that there will be no delay in agreeing the sale. 2. These particulars do not constitute part or all of an offer or contract. 3. The measurements indicated are supplied for guidance only and as such must be considered incorrect. Potential buyers are advised to recheck measurements before committing to any expense. 4. We have not tested any apparatus, equipment, fixtures, fittings or services and it is in the buyers interest to check the working condition of any appliances.

Connells Residential is registered in England and Wales under company number 1489613, Registered Office is Cumbria House, 16-20 Hockliffe Street, Leighton Buzzard, Bedfordshire, LU7 1GN. VAT Registration Number is 500 2481 05.

See all our properties at www.connells.co.uk | www.rightmove.co.uk | www.zoopla.co.uk

Property Ref: SSR312734 - 0005