



Ashfield Road, W3

£550,000

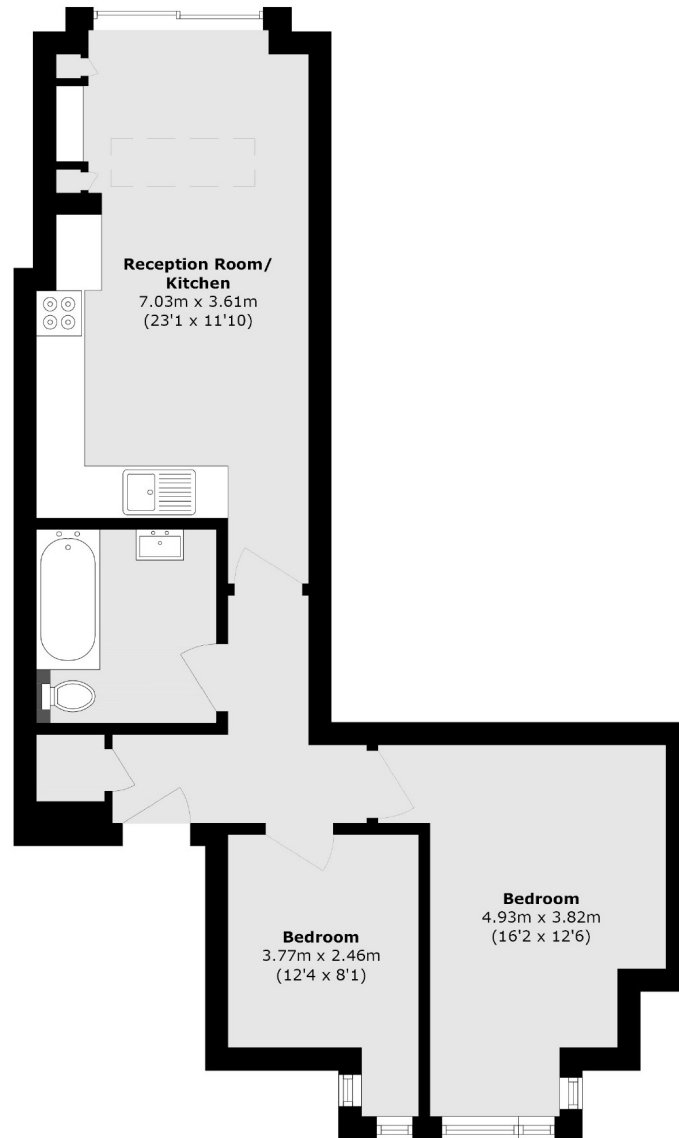
A beautifully finished ground floor flat offering two spacious bedrooms. This property showcases exceptional attention to detail throughout, featuring a bespoke Italian kitchen, Italian quartz worktops, and herringbone oak flooring. Custom-built wardrobes add to the premium finish, the property also has a private south facing garden.



Located moments from Acton Park and East Acton station and just over half a mile from the shops and amenities of Churchfield Road and Acton Central station.

- Two Bedrooms • No Onward Chain • Share of Freehold •
- Excellent Condition • South Facing Garden • One Bathroom •





Total area (approx.): 60.7 sq. m (653.3 sq. ft)

Robertson Smith & Kempson Acton Sales
137 High Street, Acton,
London, W3 6LY
020 8896 3996
actonsales@robertsonsmithandkempson.co.uk

Energy Rating: C. We aim to make our particulars both accurate and reliable. However they are not guaranteed; nor do they form part of an offer or contract. If you require clarification on any points then please contact us, especially if you're traveling some distance to view. Please note that appliances and heating systems have not been tested and therefore no warranties can be given as to their good working order.