

£875,000

Greencroft Road

Hounslow, TW5 0BH



PROPERTY SUMMARY

A well-proportioned and much extended family home located within a popular residential road, offering versatile accommodation and excellent transport links.

The property features a front reception room, spacious through lounge to the rear, providing a bright and flexible living and dining area ideal for modern family life. There is an extended kitchen with an additional sitting area, creating a practical and sociable space for everyday living and entertaining.

On the ground floor there is a shower room w/c and bedroom, suitable for use as a guest room, home office or further reception room. The first floor comprises three well-sized bedrooms and a family bathroom, with a further second floor providing bedrooms five and six with bathroom suite.

Externally, the property benefits from an external summer house, and front off-street parking, a notable advantage for the area.

Situated within the area of Heston/Hounslow, the property is well placed for local amenities, schools and transport connections. Hounslow West, Hounslow Central and Hounslow East Underground stations (Piccadilly Line) provide direct links into Central London and Heathrow Airport. Excellent road connections are available via the A4 (Great West Road) and M4 motorway, while multiple bus routes serve the surrounding area.

6



3



2



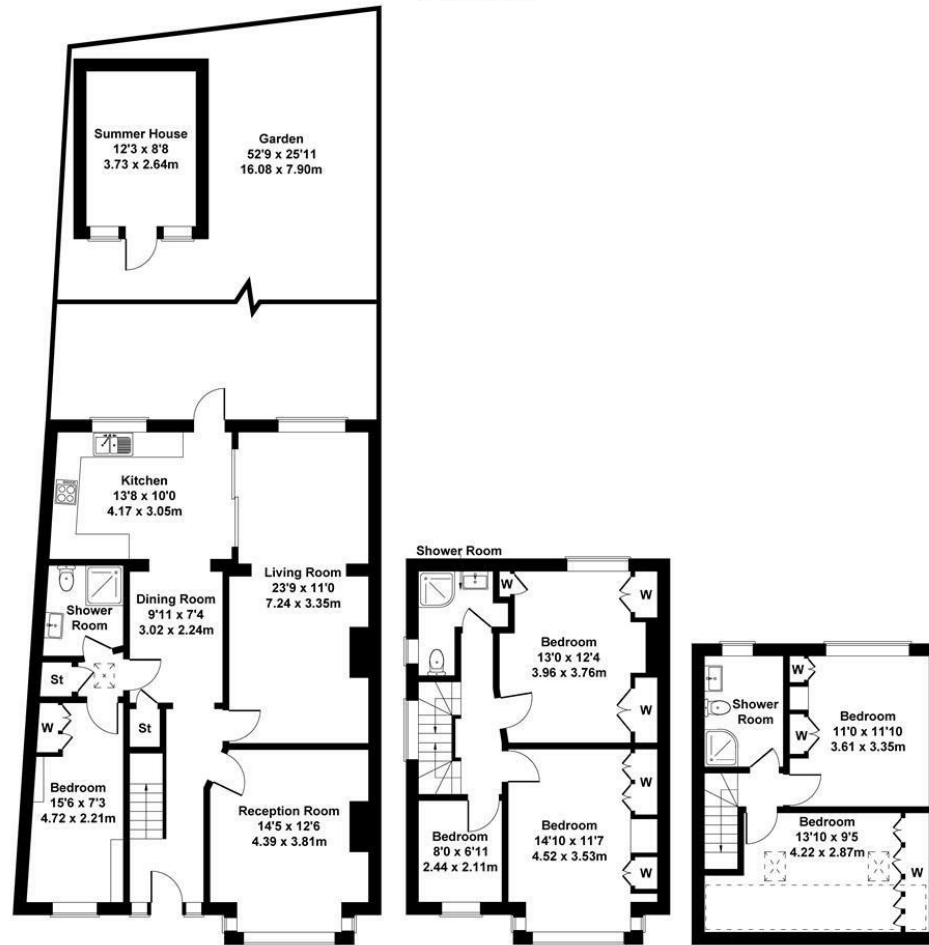






Greencroft Road, Hounslow

Approximate Gross Internal Area
1970 sq ft - 183 sq m



Not to Scale. Produced by The Plan Portal 2026
For Illustrative Purposes Only.



LOCAL AUTHORITY

Hounslow

TENURE

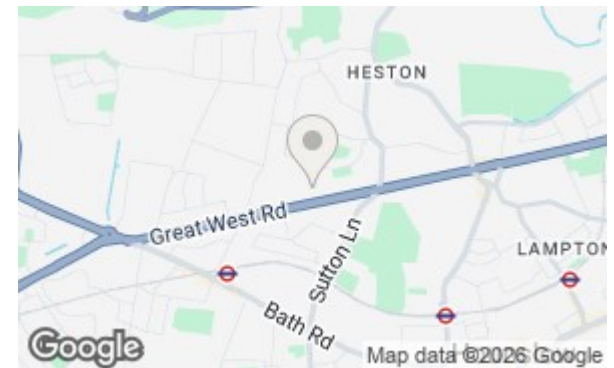
Freehold

COUNCIL TAX BAND

VIEWINGS

By prior appointment only

Energy Efficiency Rating	Current	Potential
Very energy efficient - lower running costs		
92 plus) A		
81-91) B		
69-80) C		77
55-68) D	61	
39-54) E		
21-38) F		
1-20) G		
Not energy efficient - higher running costs		
England & Wales	EU Directive 2002/91/EC	



Agents Note: Whilst every care has been taken to prepare these particulars, they are for guidance purposes only. All measurements are approximate and are for general guidance purposes only and whilst every care has been taken to ensure their accuracy, they should not be relied upon and potential buyers/tenants are advised to recheck the measurements

**Shaw
& Co**

ESTATE
AGENTS

OFFICE ADDRESS

10 Central Parade
New Heston Road
Heston
Middlesex
TW5 0LH

OFFICE DETAILS

0208 570 7258
heston@shawandcoestates.com