



## Keslake Road, Kensal Rise, NW6

### TO LET - £6,500 Per Month

TO LET - a rare opportunity to enjoy a truly luxurious living experience. This four-bedroom, three-bathroom (two en suite, one communal, with additional downstairs WC) Victorian property has been renovated to an exceptional standard, with tasteful fittings and striking accents throughout.

The Ground Floor combines a spacious reception room with an exquisitely designed kitchen, featuring Quartz worktops, a large gas hob and cooker, huge American-style fridge-freezer, and all the expected integrated appliances. The elegant floor tiling continues through bi-fold doors directly into a modernist garden delightfully bringing the outside in.

A separate utility area also adjoins the kitchen, containing both washing machine and tumble dryer in addition to an integrated softener system. All bedrooms are doubles, including the en-suite loft conversion. Floor-to-ceiling wardrobes with pull-down closet rods in the master bedroom exemplify the excellent storage options available. Meanwhile attractive skylights maximise light and the sense of space.

Underfloor heating to the Ground Floor & bathrooms makes sure the house stays warm during even the coldest winter months. A Heatmiser smart-control system provides the convenience of controlling the temperature to each room via mobile phone, and a smart-phone video surveillance system is located on all three floors.

To fully appreciate the scope of this outstanding property's benefits, viewing is essential. Available mid December but this is flexible.

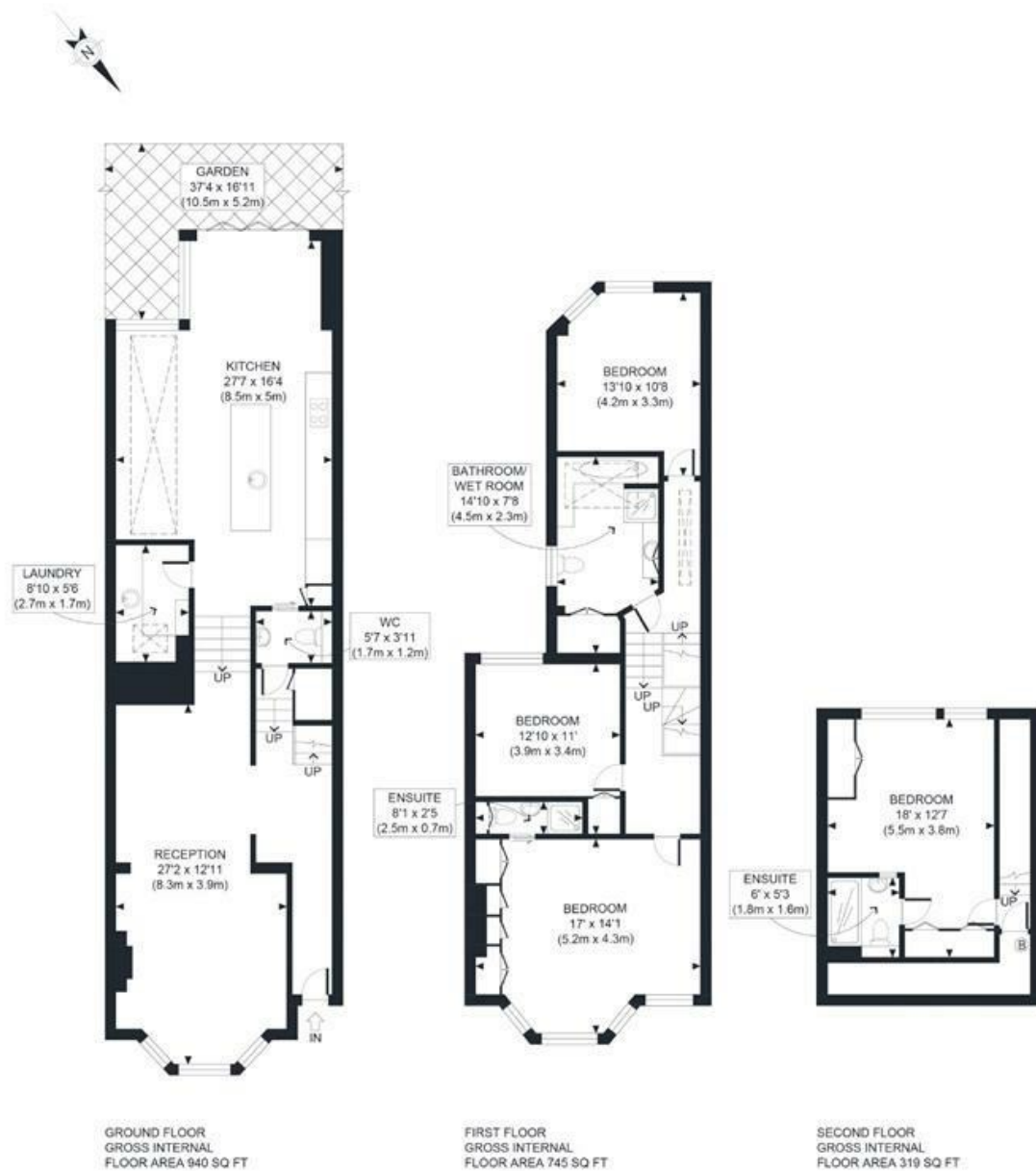
- AVAILABLE MID DECEMBER OR JANUARY
- Offered unfurnished
- 4 bedrooms, 3 bathrooms + WC
- Stunning modern kitchen/diner
- Close to a variety of transport links
- Extraordinary Victorian renovation
- Luxurious and contemporary
- Many period features retained



020 8450 9377

[rentals@cameronsstiff.co.uk](mailto:rentals@cameronsstiff.co.uk)

[cameronsstiff.co.uk](http://cameronsstiff.co.uk)



APPROX. GROSS INTERNAL FLOOR AREA 2004 SQ FT / 186 SQM  
Ref: Copyright **photoplan**

Disclaimer: Floor plan measurements are approximate and are for illustrative purposes only. While we do not doubt the floor plan accuracy and completeness, you or your advisors should conduct a careful, independent investigation of the property in respect of monetary valuation

EPC: C  
Ref: 15064391

