



## Rockhall Road, NW2

### TO LET - £2,175 Per Month

AVAILABLE TO LET FROM 1st October 2025 is this modern First Floor, two bedroom apartment situated over two the first and second floors of this Victorian conversion finished to an excellent standard with a high specification throughout.

Features include stunning engineered oak flooring, high ceilings, contemporary Beeck Kuchen kitchen with integrated Bosch appliances, modern bathroom, shower room and a generous sized terrace off the reception room, eaves storage and gas central heating.

Transport links include Cricklewood Mainline (Thameslink) station, Willesden Green (Jubilee - Zone 2) that offers easy access into Central London, Canary Wharf and London City Airport. Viewing is recommended..

- Stylish two bedroom duplex apartment
- Reception with double access onto balcony
- Modern kitchen, bathroom & shower room
- Good transport links
- DEPOSIT: £2509 COUNCIL: Brent (C)
- Available from: 1st October 2025



020 7328 2828

rentals@cameronsstiff.co.uk

cameronsstiff.co.uk

## Rockhall Road, London, NW2

Approximate Area = 721 sq ft / 66.9 sq m

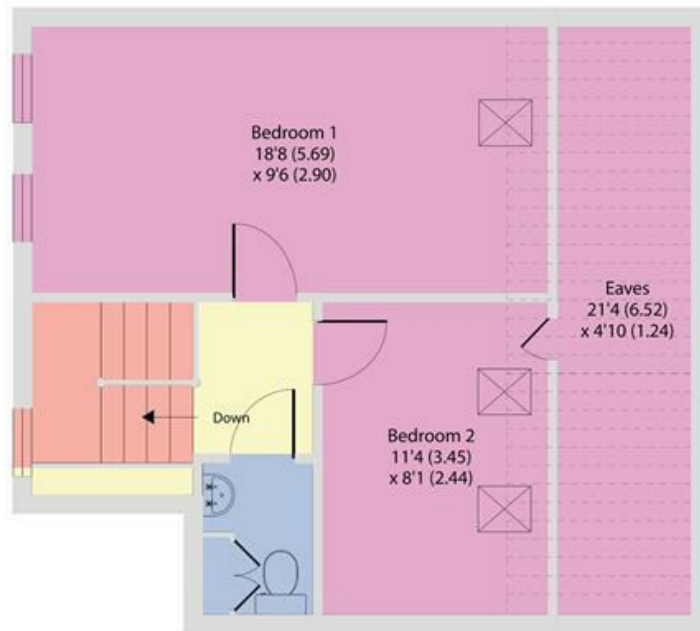
Limited Use Area(s) = 143 sq ft / 13.2 sq m

Total = 864 sq ft / 80.2 sq m

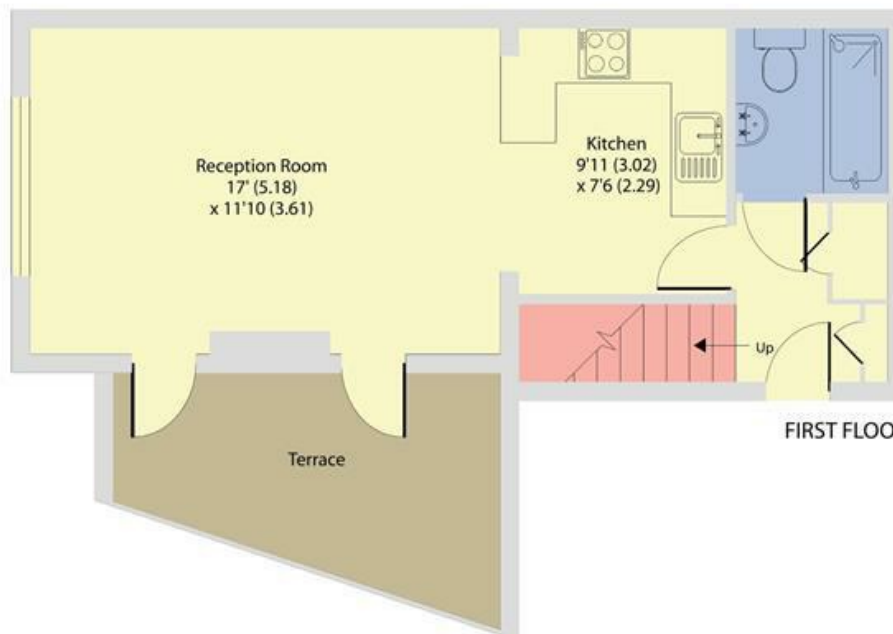
For identification only - Not to scale



Denotes restricted head height



SECOND FLOOR



FIRST FLOOR



Floor plan produced in accordance with RICS Property Measurement 2nd Edition, Incorporating International Property Measurement Standards (IPMS2 Residential). © nchecom 2025. Produced for Camerons Stiff & Co. REF: 925074

EPC: C

Ref: 18357660

