



## Rowan Road, SW16

**£450,000**

A large, two double bedroom house presented in excellent condition with an extended kitchen dining room and no onward chain. Energy rating: C



The accommodation offer entrance hall, front reception room, rear reception room, guest w.c and open plan kitchen/dining room which opens to the rear garden. Upstairs there are two double bedrooms and modern bathroom. Outside is a low maintenance private rear garden.

Terrace house, Two bedrooms, Extended kitchen, Excellent condition, Chain free, EPC: C

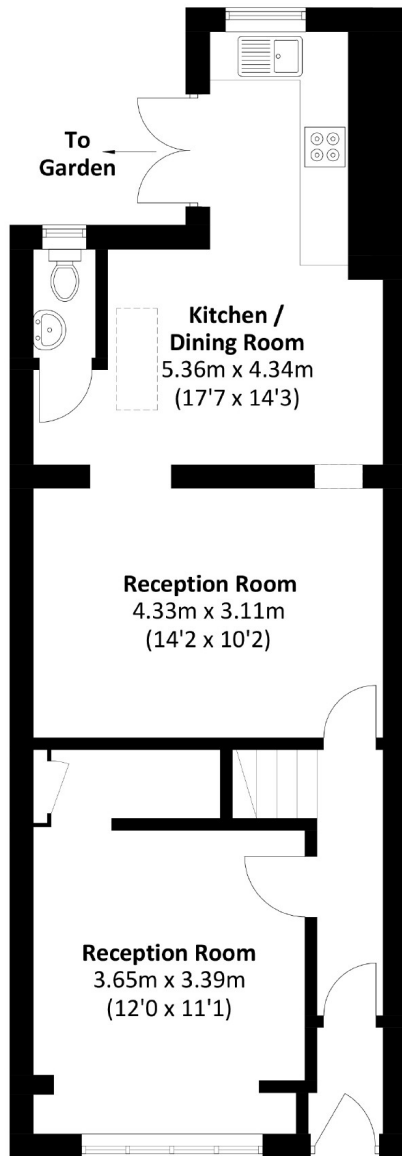




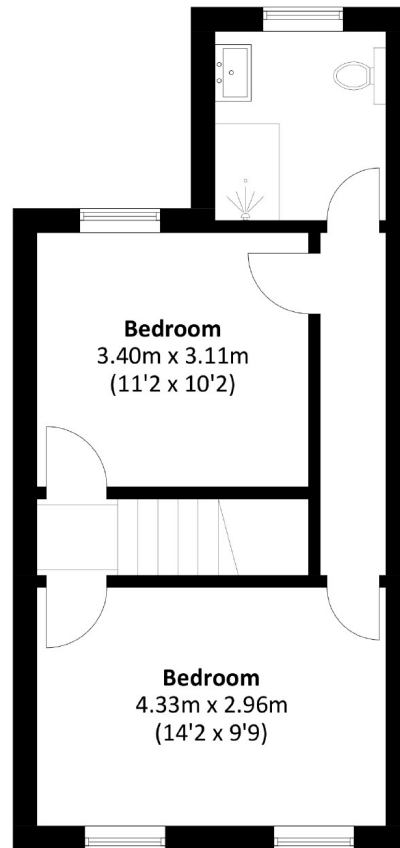








**Ground Floor**



**First Floor**

Total area: Approx. 89.7 sq. meters (965.5 sq. feet)

James Alexander  
1341 London Road,  
Norbury, SW16 4BE  
020 8629 8028  
norburysales@jamesalexander.com

Energy Rating: C We aim to make our particulars both accurate and reliable. However they are not guaranteed; nor do they form part of an offer or contract. If you require clarification on any points then please contact us, especially if you're travelling some distance to view. Please note that appliances and heating systems have not been tested and therefore no warranties can be given as to their good working order.