

Willenhall Drive, Hayes, UB3 2UT
£220,000





Willenhall Drive, Hayes, UB3 2UT

£220,000

- Ground Floor Apartment
- Prime Location Close To Hayes Town
- Great Rental Yield Potential
- Quiet Cul De Sac Location
- Ideal For First Time Buyers & Investors
- New Lease Upon Completion
- 0.5 Mile Proximity To Elizabeth Line
- Parking Available On Site
- Well Maintained Communal Grounds
- Chain Free

Description

**** NEW LEASE UPON COMPLETION 125 YEARS****

This charming property offers a delightful living experience, perfect for first time buyers looking to settle in a well presented home.

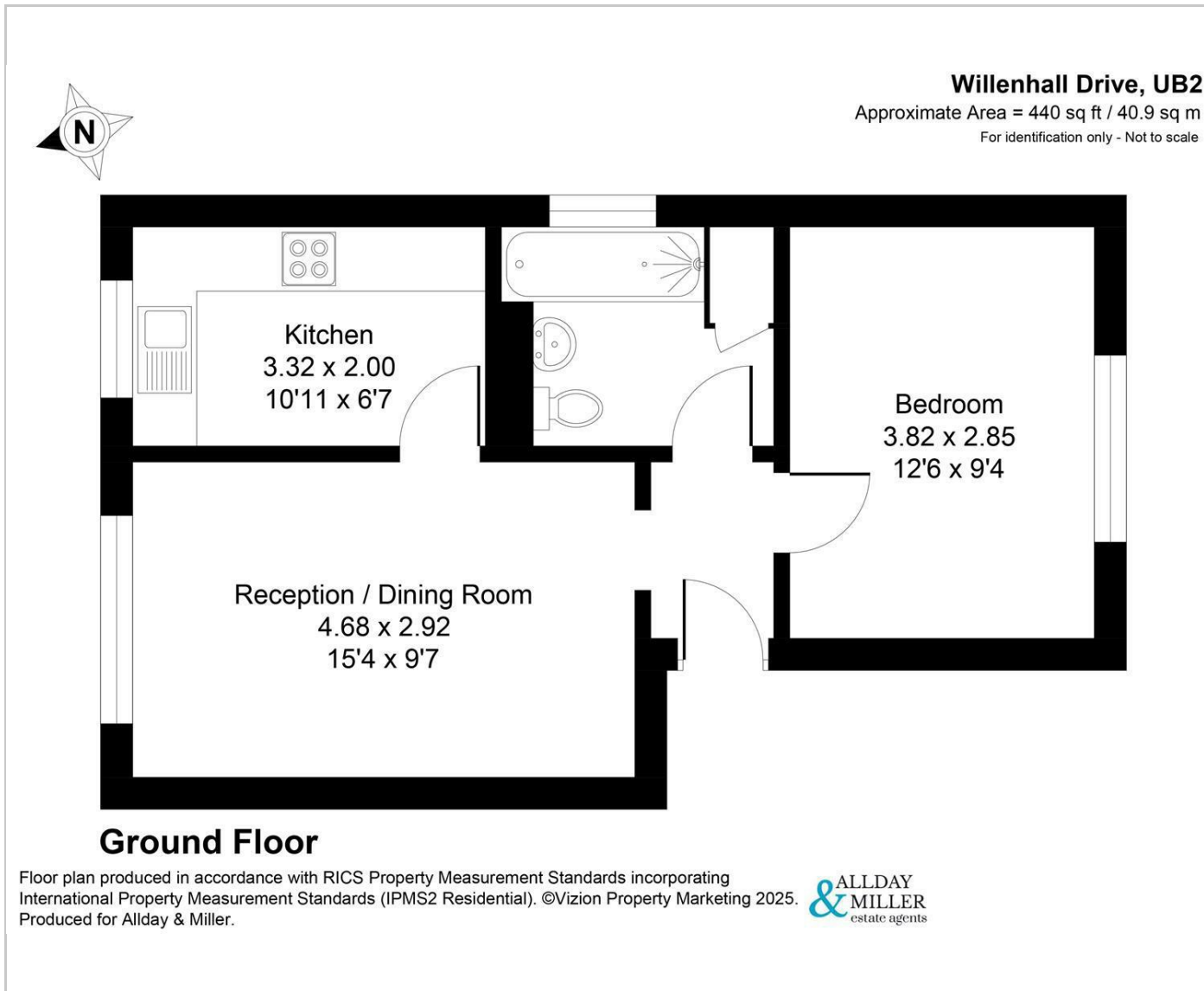
The home features a spacious double bedroom, providing ample room for relaxation and rest, a modern bathroom, the heart of the home is the bright and airy reception/dining room, which creates an inviting atmosphere the fitted kitchen is equipped with ample storage space.

Situation

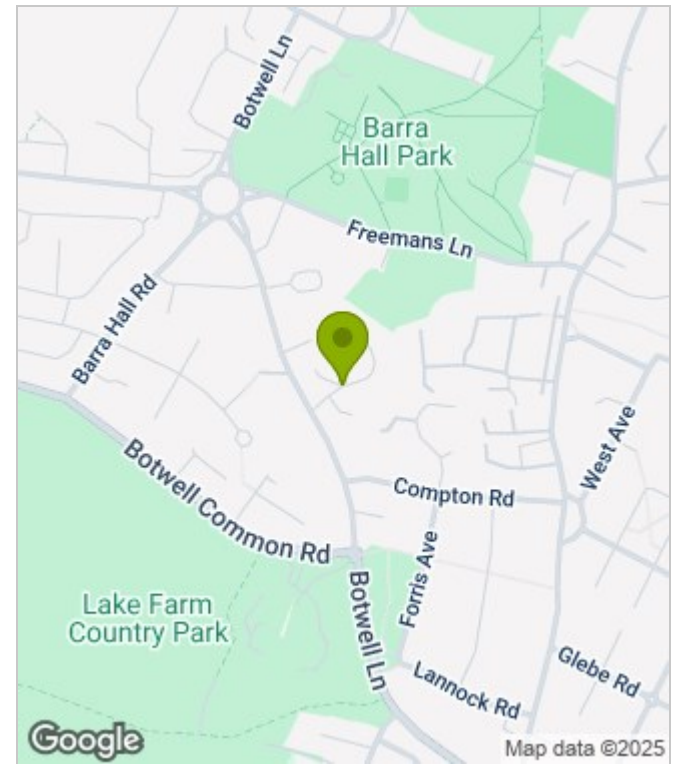
Willenhall Drive situated off Botwell Lane in the heart of Hayes, being just moments from the Uxbridge Road with its variety of local shops, restaurants, takeaways and coffee shops. For the commuters Hayes and Harlington station with the Elizabeth line is just a 7 minute drive away making the journey into central London a breeze. A number of local bus routes to local amenities including Heathrow airport, Brunel university, Uxbridge collage and Uxbridge town centre. The area is served by many highly regarded schools including Botwell House Primary and Barnhill community high school.



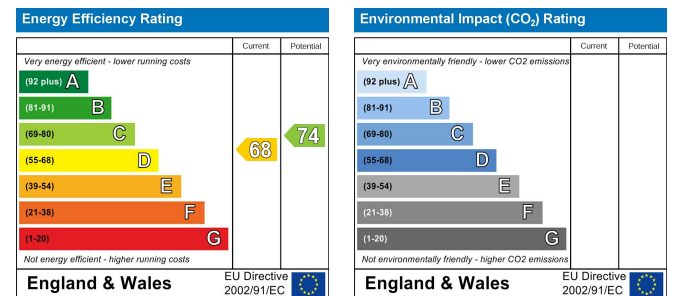
Floor Plans



Area Map



Energy Performance Graph



These particulars, whilst believed to be accurate are set out as a general outline only for guidance and do not constitute any part of an offer or contract. Intending purchasers should not rely on them as statements of representation of fact, but must satisfy themselves by inspection or otherwise as to their accuracy. No person in this firm's employment has the authority to make or give any representation or warranty in respect of the property.