

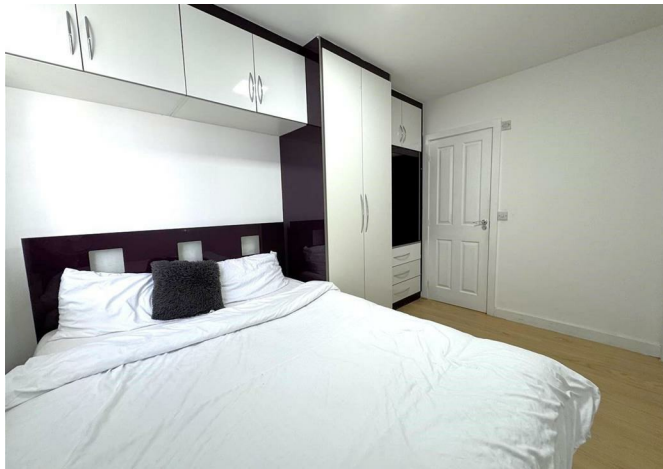
ALLDAY  
& MILLER



Fairclough Close, Northolt, UB5 6FL  
£2,800

4 2 1 c





Fairclough Close, Northolt, UB5 6FL

**£2,800**

- Semi Detached Family Home
- Parking For 2 Cars
- Four Bedrooms
- Quiet Cul-De-Sac Location
- Easy To Maintain Garden
- Converted Garage
- Two Bathrooms
- Modern Open Plan Reception Room
- Flexible On Furnishings
- Fitted Storage



## Description

Step into comfort and contemporary style in this spacious 4-bedroom, 2-bathroom semi-detached home, ideally located on Fairclough Close, part of the popular Garden Union Village development in Hayes. With modern finishes, smart layout, and low-maintenance outdoor space, this property is perfect for families.

## Situation

Fairclough Close is set within Garden Union Village, a modern and family-friendly development known for its peaceful surroundings and strong sense of community. This home is ideally located for commuters and families alike with Hayes & Harlington Station just a short distance away, offering fast and direct Elizabeth Line services. There are excellent road links via the M4, A312, A40, and M25. With Heathrow Airport also just a short drive away. The property is close to a wide range of local shops, supermarkets, and restaurants. Several highly-rated schools are within easy reach, including Minet Junior and Infant Schools, Botwell House Primary, and Barnhill Community High, making it a great location for families with children.



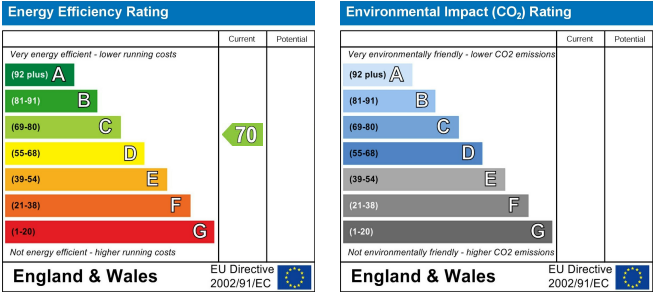
Floor Plans



Area Map



Energy Performance Graph



These particulars, whilst believed to be accurate are set out as a general outline only for guidance and do not constitute any part of an offer or contract. Intending purchasers should not rely on them as statements of representation of fact, but must satisfy themselves by inspection or otherwise as to their accuracy. No person in this firms employment has the authority to make or give any representation or warranty in respect of the property.