



## Prospect Place, E1W

£775,000

 3  1  2  C

- Share of Freehold
- Three Bedrooms
- Garden
- Garage
- Gated Development
- Chain Free



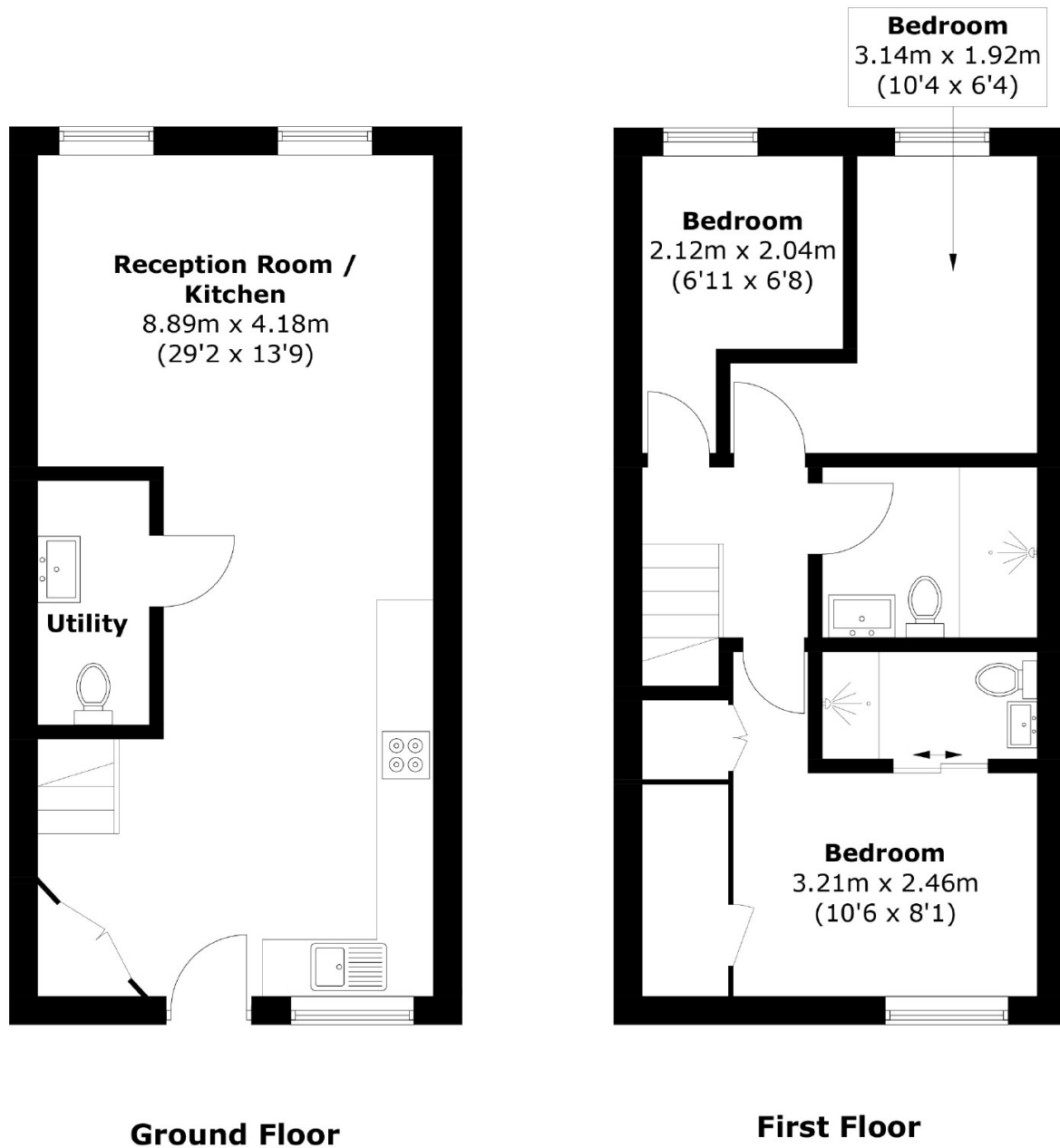


A beautiful three-bedroom home in the very heart of Wapping, this property offers the perfect balance of space, comfort, and location. Thoughtfully laid out and well-maintained, it features three bedrooms, a modern family bathroom, an en-suite, and the added convenience of a separate cloakroom and utility room. The private garden is a peaceful retreat, ideal for entertaining guests or simply relaxing outdoors. A secure garage provides valuable storage, a true bonus in this area. Offered with a share of freehold, this home presents a rare opportunity to enjoy the charm and community feel of Wapping, just moments from the river, local amenities, and excellent transport links.

Ideally situated in Prospect Place on Wapping Wall, just 0.2 miles from Wapping Station and close to Wapping Lane, which offers a variety of convenience stores, including a local butcher and a Sainsbury's. Set in a peaceful residential spot just moments from the river and Wapping's charming cafes, pubs, and transport links, this home is perfect for families or professionals seeking long-term value and lifestyle. Perfectly positioned for easy commutes to both the City and Canary Wharf.







Total area: Approx. 74.3 sq. meters (799.8 sq. feet)

35A Wapping High Street,  
London, E1W 1NR  
020 7665 5589  
ea2group.com