



## Milk Yard, E1W

£550,000

 2  1  1  D

- Two Bedrooms
- Duplex Apartment
- Balcony
- Allocated Parking Space
- Resident Gym
- Gated Development



Well presented 2 bedroom duplex apartment with balcony on the 2nd floor of this sought after gated development in Wapping. This spacious apartment comprises of a large Reception with a West facing balcony, an open plan fully fitted Kitchen, 2 Double Bedrooms and a large modern Bathroom.

Riverside Mansions further benefits from a Porter, a communal courtyard and a Resident Gym. Ideally located in Wapping within close proximity of Wapping and Shadwell Stations as well as local bus routes providing an easy access to Canary Wharf, the City, London Bridge or Shoreditch. Walking distance to St Katharine's Docks and with a wide selection of pubs, bars, restaurants and cafes nearby. Only a few minutes' walk from the Basin, the Thames Path and Wapping Farmers' Market.



## Riverside Mansions, Milk Yard, E1W

Approximate Gross Internal Area = 767 sq ft / 71.3 sq m

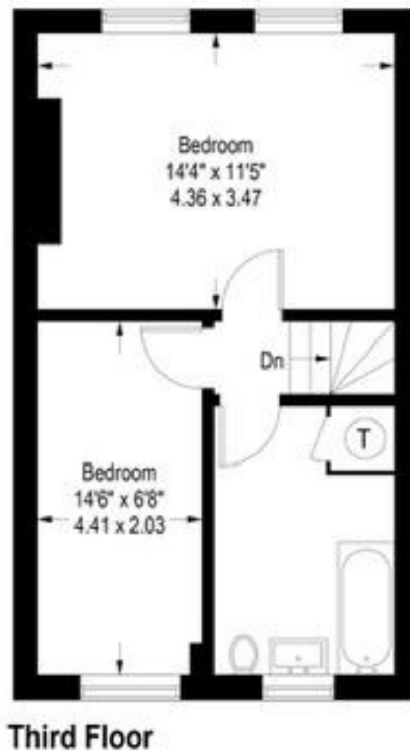


Illustration for identification purposes only,  
measurements are approximate, not to scale. (ID834564)

35A Wapping High Street,  
London, E1W 1NR  
020 7665 5589  
ea2group.com