



**Kemerton Road, CR0**

**£400,000**

A two bedroom end of terrace period house presented in good condition, with open plan kitchen and private garden. Energy rating: D





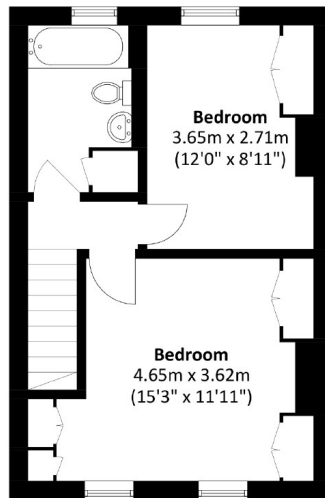
The accommodation offer entrance hall, front reception room, open plan kitchen/dining room which opens to the rear. Upstairs there are two double bedrooms and modern bathroom. Outside is a private rear garden with storage room and side access.

Located on a quite residential just 0.9 miles from East Croydon station along with its local shops and restaurants.

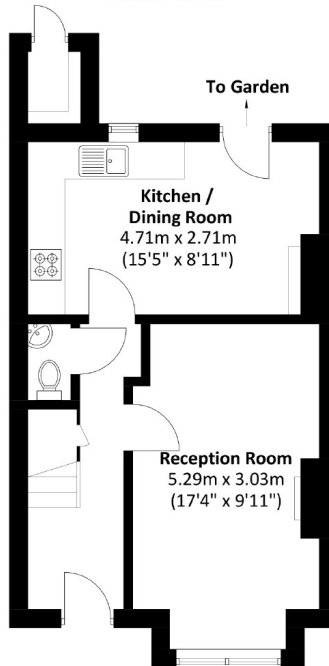
Period house, Two bedrooms, End of terrace, Private garden, Close to transport, Energy rating: D







**First Floor**



**Ground Floor**

Total area: Approx. 71.9 sq. meters (773.9 sq. feet)  
External Storage : Approx. 1.1 sq. meters (11.8 sq. feet)

James Alexander  
1341 London Road,  
Norbury, SW16 4BE  
020 8629 8029  
norburylettings@jamesalexander.com

Energy Rating: D We aim to make our particulars both accurate and reliable. However they are not guaranteed; nor do they form part of an offer or contract. If you require clarification on any points then please contact us, especially if you're travelling some distance to view. Please note that appliances and heating systems have not been tested and therefore no warranties can be given as to their good working order.