



## Wapping High Street, E1W

£1,250,000

 2  1  2  C

- Two Bedroom
- Two Bathroom
- 24 Hour Concierge
- Allocated Parking Space
- Residents Gym
- Tower Bridge Views

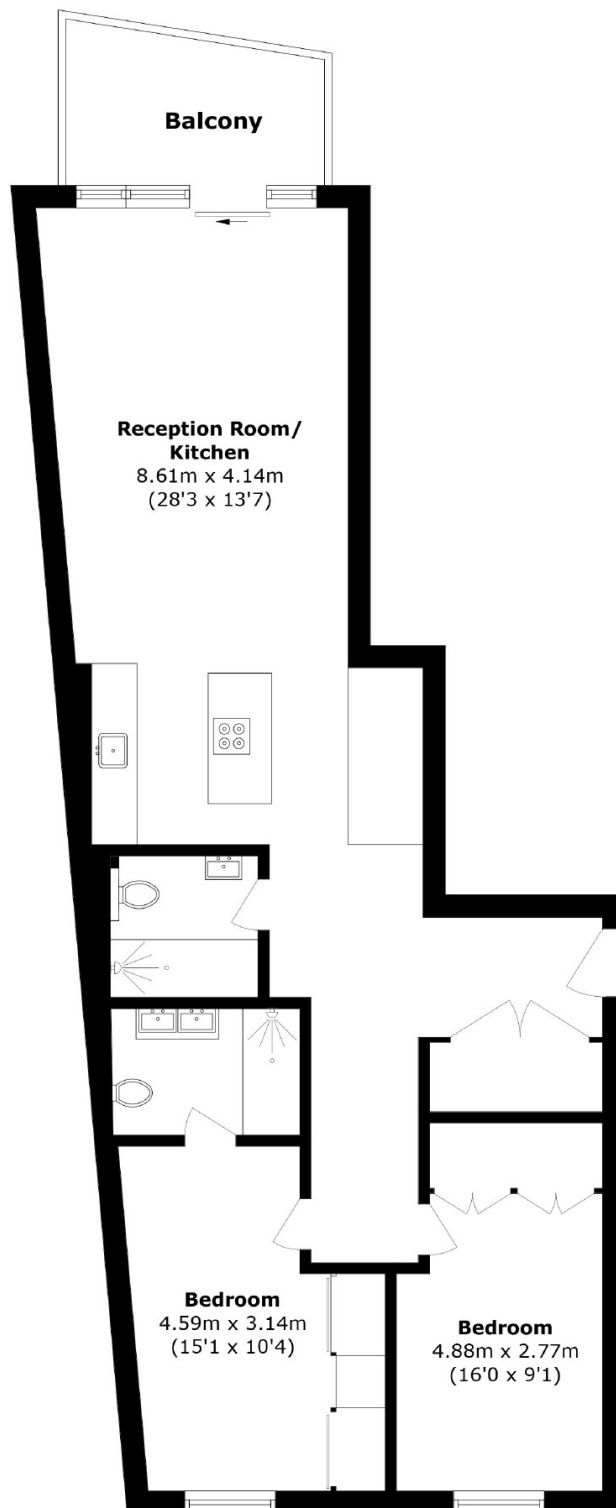


Located in the prestigious Capital Wharf development on Wapping High Street, this immaculate two-bedroom, two-bathroom apartment combines modern luxury with rich maritime heritage. Positioned on the second floor, it boasts a private balcony with direct, uninterrupted views of Tower Bridge and the River Thames. The interior has been refurbished to a high standard, featuring a spacious reception room, contemporary kitchen, and elegant finishes throughout. Residents benefit from a 24-hour concierge, lift access, fully equipped gym, and secure allocated parking. Capital Wharf sits on the historic site of Black Eagle Wharf, once a bustling hub for the docklands trade. Today, it offers tranquil riverside living with excellent transport links and proximity to iconic London landmarks including St Katharine Docks, The City, and Canary Wharf. Surrounded by a vibrant mix of culture, dining, and scenic walks, this apartment represents a rare opportunity to enjoy waterside living in one of London's most characterful locations.

Ideally located just 0.4 miles from Wapping Overground Station, and within easy reach of Tower Hill (Circle & District lines) and Tower Gateway (DLR), the property offers excellent connectivity to The City, Canary Wharf, and Shoreditch. Just moments away, St Katharine Docks offers a vibrant selection of waterfront restaurants, cafés, and pubs including Emilia's Pasta, Bravas







Total area (approx.): 86.6 sq. m (932.1 sq. ft)

Balcony area (approx.): 6.6 sq. m (71.0 sq. ft)

35A Wapping High Street,  
London, E1W 1NR  
020 7665 5589  
ea2group.com