



Dudley Road, NW6

TO LET - £7,900 Per Month

AVAILABLE TO LET is this beautifully presented four bedroom terraced house, arranged over three floors, situated on a pretty tree lined street in the heart of Queens Park.

Offering 1806 sq ft of stylish accommodation, the property comprises a bright bay fronted reception room with hard wooden flooring, a spacious kitchen with an island and bi-folding doors leading to the 35 ft private garden. The Top Floors offer four double bedrooms with plenty of storage space and three bathroom suites.

Dudley Road is moments away from the bars, gastropubs, and independent shops of Chamberlayne Road and Salisbury Road. Excellent transport links are also available via Queen's Park (Bakerloo - Zone 2) and Kensal Rise (Overground).

- Stylish 4 bedroom period property
- Offering 1806 sq ft
- Feature fireplaces, ceiling cornice & high ceilings
- 35 ft private well maintained garden
- Transport: Queens Park (Bakerloo-Zone 2)
- Council: Brent (F). Deposit: £9,115

020 8450 9377

rentals@cameronsstiff.co.uk

cameronsstiff.co.uk



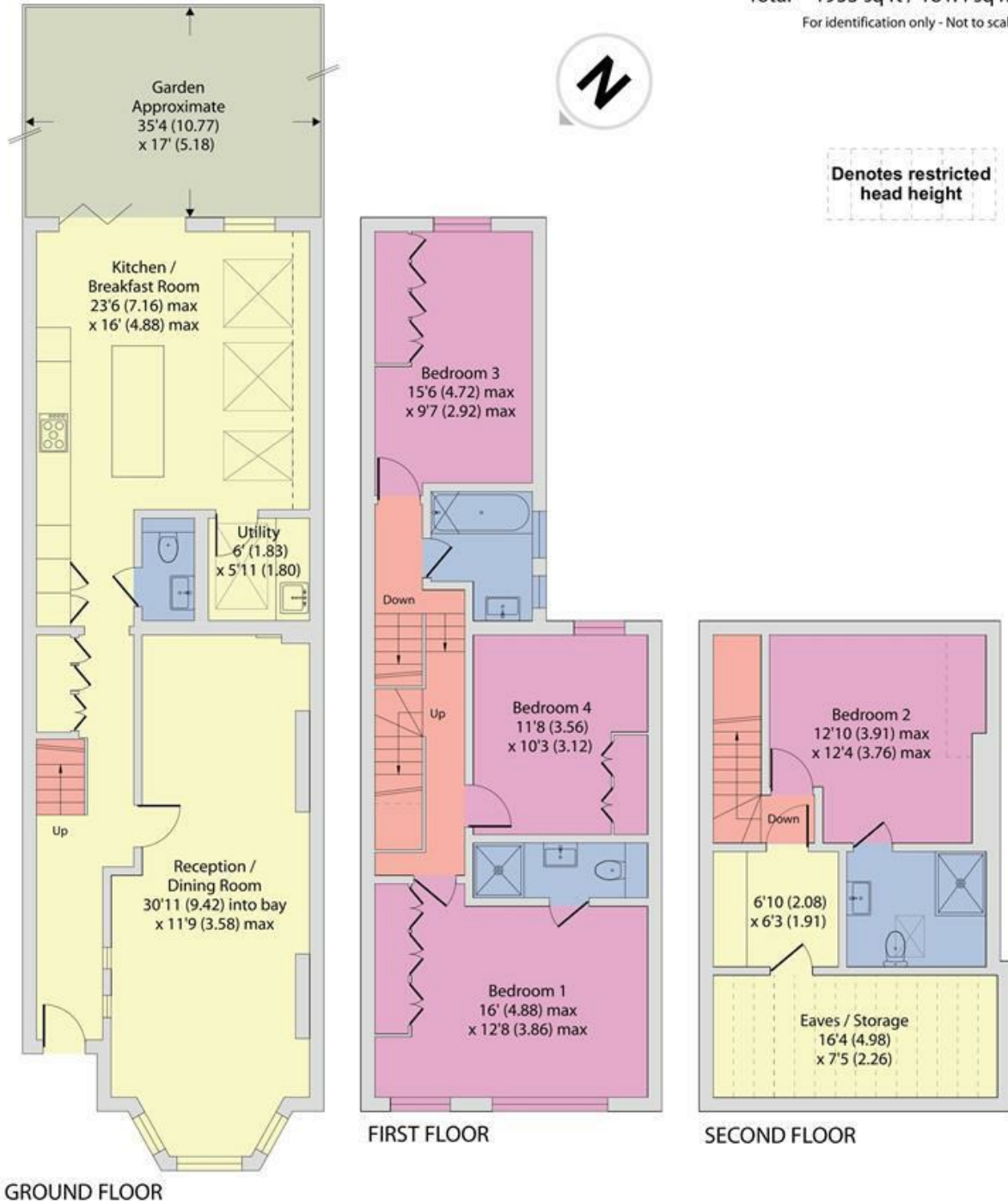
Dudley Road, London, NW6

Approximate Area = 1806 sq ft / 167.7 sq m

Limited Use Area(s) = 147 sq ft / 13.6 sq m

Total = 1953 sq ft / 181.4 sq m

For identification only - Not to scale



Floor plan produced in accordance with RICS Property Measurement 2nd Edition, Incorporating International Property Measurement Standards (IPMS2 Residential). © nchecon 2025. Produced for Camerons Stiff & Co. REF: 831169

EPC: D

Ref: 17905515

