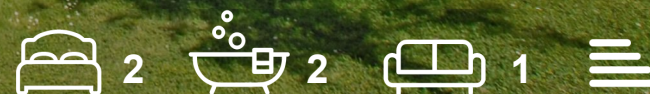




Jupiter Heights, Uxbridge, UB10 0TA
£375,000





Jupiter Heights, Uxbridge, UB10 0TA

£375,000

- Luxury Apartment
- 827 sq ft/ 76.8 sq m
- Walking distance To Uxbridge Town Centre
- Built 6 Years Ago
- Integrated Kitchen/Breakfast room
- St Andrews Development
- Large En Suite
- Two Bathrooms
- Allocated Parking Bay & Visitor Bays
- Lease 118 years

Description

This spacious and bright accommodation enjoys, entrance hallway with large storage cupboard, living room with Juliet balcony over looking the grounds, integrated kitchen/breakfast room, two double bedrooms the master enjoying a en suite shower room, finally you have a family bathroom.

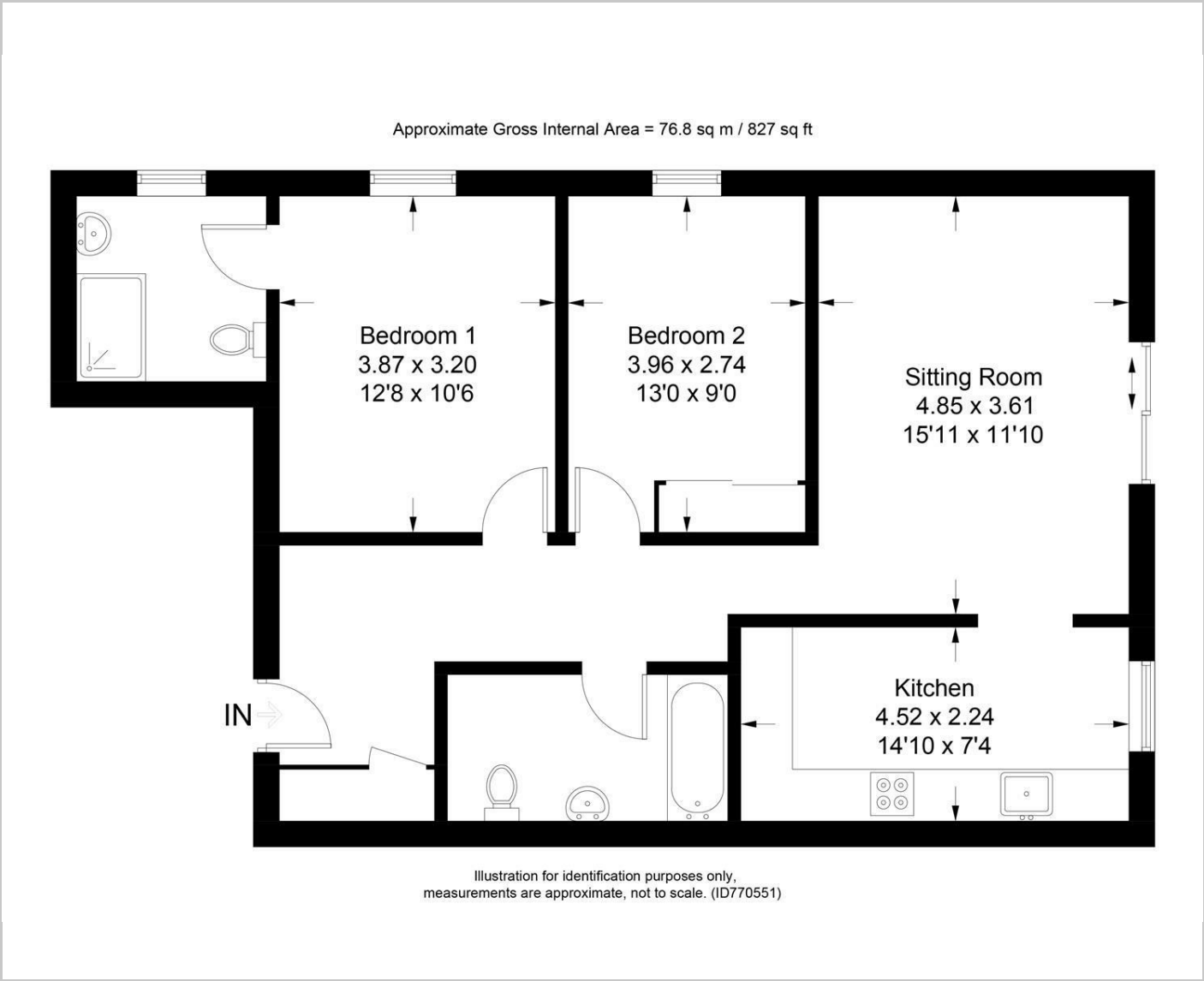
The property benefits from a well maintained, landscaped communal garden with one allocated parking space and visitors parking. There is access out to a private terrace from the living room which is well screened by a variety of shrubs and trees

Situation

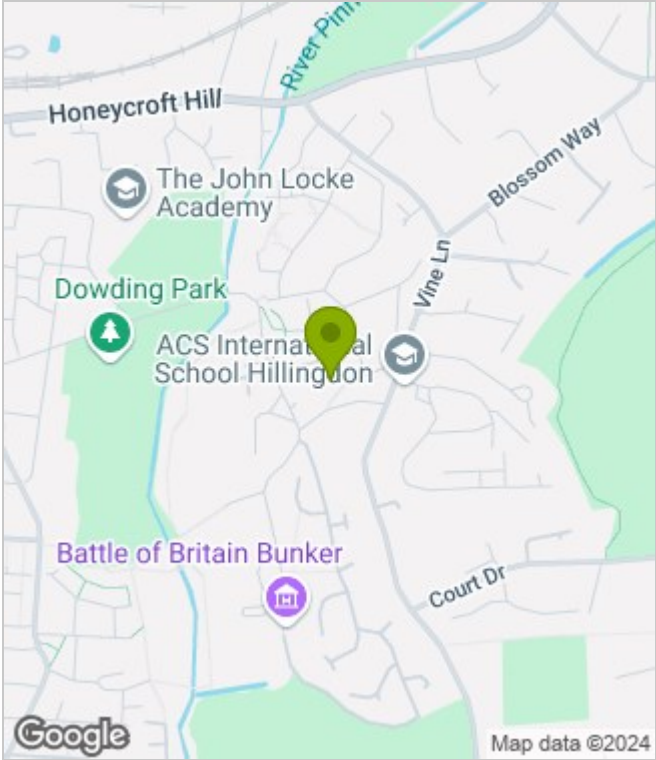
This 6 year old development is superbly situated just off of Vine Lane a most sought after, tree lined, residential road in North Hillingdon. There are well regarded schools in close proximity and a number of recreational facilities such as Hillingdon Golf and Cricket Club, Court Park and the fitness and leisure centre in Uxbridge. Uxbridge Town Centre with its array of shopping facilities, restaurants and bars and the Piccadilly/Metropolitan Line Station is a short distance away along with the A40/M40/M4 and M25 giving access to London and the Home Counties along with Heathrow Airport.



Floor Plans



Area Map



Energy Performance Graph



These particulars, whilst believed to be accurate are set out as a general outline only for guidance and do not constitute any part of an offer or contract. Intending purchasers should not rely on them as statements of representation of fact, but must satisfy themselves by inspection or otherwise as to their accuracy. No person in this firms employment has the authority to make or give any representation or warranty in respect of the property.