

TATES

Residential Sales & Lettings

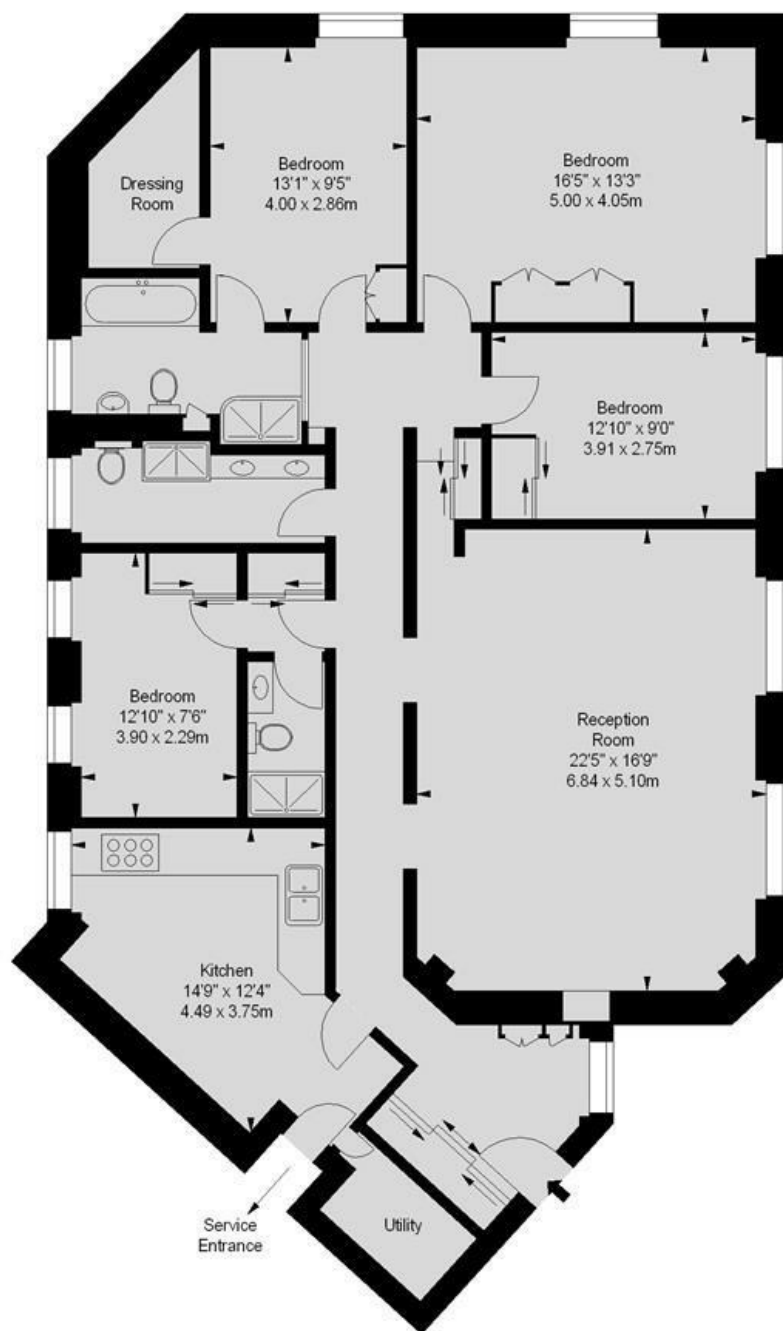


North End House, Fitzjames Avenue, London W14 0RZ £1,100 Per week

- 4 double bedrooms with fitted wardrobes
- Large double reception room
- Gated development with 24 hour porter
- Landscaped communal garden,
- 3 bathrooms (2 ensuite) & laundry room
- Heating and hot water inclusive of rent
- Sixth floor (with lift)
- Energy Efficiency Rating Current Band: D

North End House, W14

Approximate gross internal area
1,694 sq ft / 157.37 sq m



Sixth Floor

Illustration For Identification Purposes Only. Not To Scale
*Floorplan Drawn According To RICS Guidelines

Whilst these particulars are believed to be correct, no guarantee can be given for the measurements, appliances or services. It is our recommendation that all are tested. These are not intended to form part of any contract. Tates accept no responsibility for their accuracy.

135 Hammersmith Rd London W14 0QL

T. 020 7602 6020 F. 020 7602 9522

mail@tatesestates.co.uk

tatesestates.co.uk

Tates (Agents) Ltd. Registered in England and Wales No. 2356337

Registered Office: 4th Floor Imperial House, 15 Kingsway London WC2B 6U

Energy Efficiency Rating		
	Current	Potential
Very energy efficient - lower running costs		
(92 plus) A		
(81-91) B		
(69-80) C		
(55-68) D	62	63
(39-54) E		
(21-38) F		
(1-20) G		
Not energy efficient - higher running costs		
England & Wales		
EU Directive 2002/91/EC		

