



RAINSBOROUGH SQUARE

FULHAM, SW6

150 Years

JOHN D WOOD & CO

London, Country & International Property

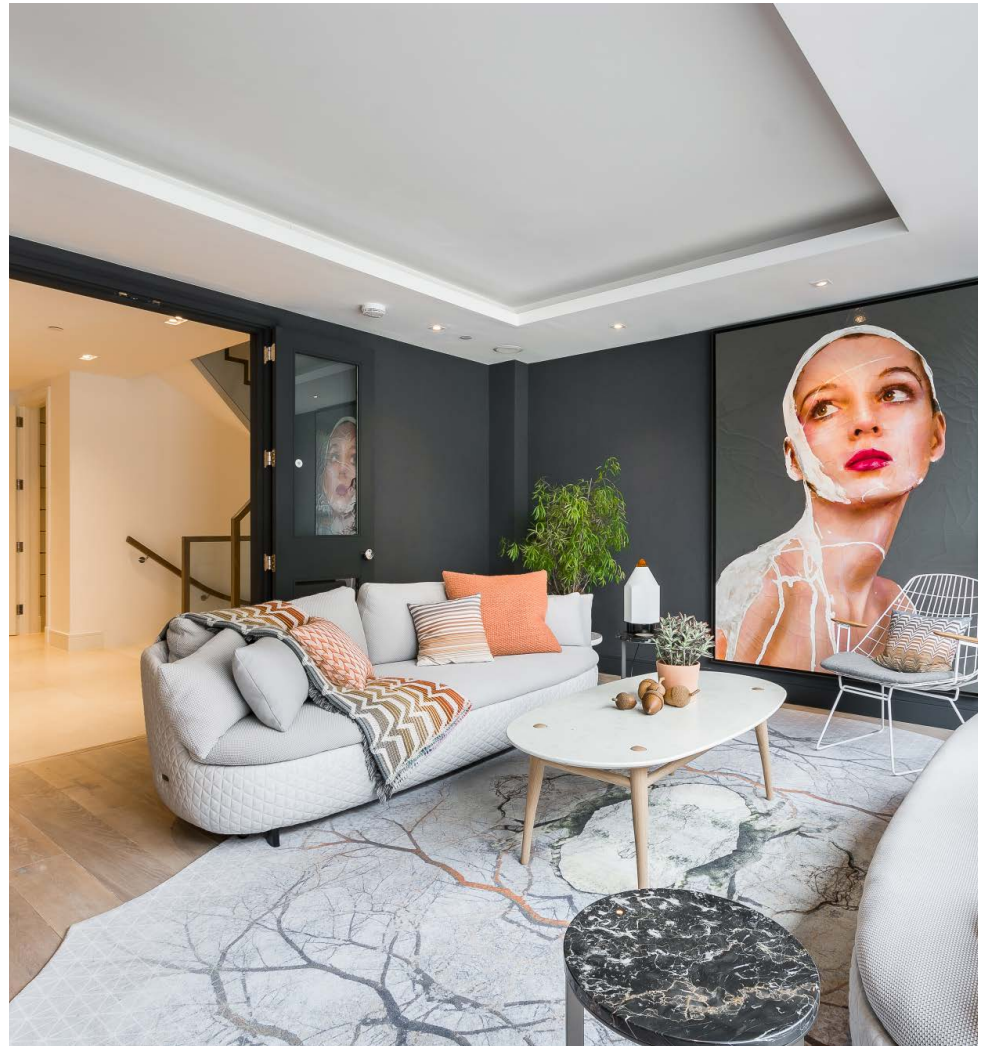
RAINSBOROUGH SQUARE

FULHAM, SW6

A beautifully presented, four-bedroom family home set within this desirable community.

The ground & lower ground floors offer ample living & entertaining space with both floors providing direct access onto secluded rear patio gardens. The upper floors house generous accommodation space by way of four well proportioned bedrooms & three bathrooms (two en-suite). The property further benefits from a private garage as well as allocated underground parking which is accessed directly from the lower ground floor of the property.

Rainsborough square is a secluded development of secure and contemporary townhouses arranged around a spacious landscaped private garden square. The development is located moments away from the amenities and transport links of Fulham Broadway and open spaces of Eel Brook Common.





£3,750,000

Subject to Contract

Local Authority: London Borough of Hammersmith & Fulham

Council Tax Band: H

Tenure: Leasehold: 989 years remaining

Ground Rent: £100 pa

Service Charge: £5,184 pa

Reference: FLM180045

Approximate Gross Internal Area:
2915 sq ft / 270.8 sq m

Energy Efficiency Rating		Current	Potential
Very energy efficient - lower running costs			
(92+)	A	87	92
(81-91)	B		
(69-80)	C		
(55-68)	D		
(39-54)	E		
(21-38)	F		
(1-20)	G		
Not energy efficient - higher running costs			
England, Scotland & Wales		EU Directive 2002/91/EC	

Rainsborough Square, SW6
Approximate Gross Internal Area 2915 sq ft (270.8 sq m)
(Including Garage of 220 sq ft/20.4 sq m)



Measurements taken from development brochure

Floor Plan produced for John D Wood by Mayer Floorplans ©. Tel 020 3387 4094
Illustration for identification purposes only, not to scale.
All measurements are maximum, and include wardrobes and window bars where applicable.
Where a room has a sloping ceiling the dotted line marks 1.500m height, and all measurements shown are at floor level

JD004_6961513_1119416_JDW026

020 7731 1487
506 Fulham Road, SW6 5NJ
fulhambroadway@johndwood.co.uk
johndwood.co.uk



John D Wood & Co. give notice to anyone reading these particulars that: i) this material is protected by the laws of copyright. The owner of the copyright is John D Wood & Co. This property sheet forms part of our database, and is protected by the database rights and copyrights laws. No unauthorised copying or distribution without permission; ii) the particulars do not constitute part of an offer or contract; iii) the particulars including text, photographs and plans are for the guidance only of prospective purchasers and must not be relied upon as statements of fact; iv) the descriptions provided therein represent the opinion of the author and whilst given in good faith should not be construed as statements of fact; v) nothing in these particulars shall be deemed a statement that the property is in good condition or otherwise nor that any services or facilities are in good working order; vi) all measurements are approximate. April 2017.