

# Frank Harris & Co.



## Hopton Street, SE1

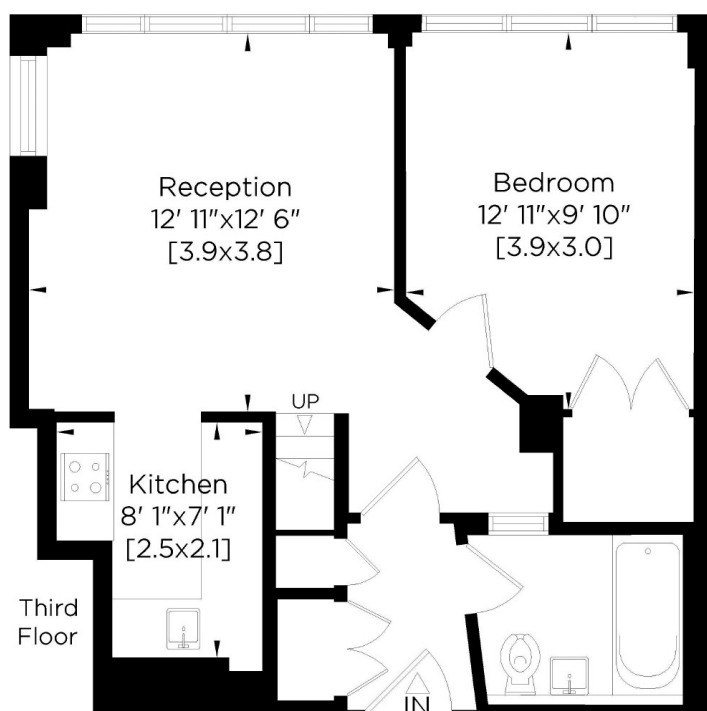
£2,900 pcm

One bedroom apartment located on the 3rd floor features high ceilings. Wooden flooring, mezzanine level ideal for a work from home space, modern Kitchen and bathroom.

Blackfriars, Southwark and London Bridge stations are close by and the flat has very easy access to the City. The apartment is close to the many shops, bars, restaurants and theatres in the Bankside area.

- 24 Hour Concierge • On-Site Gym • One Bedroom •
- Warehouse Conversion •

# Frank Harris & Co.



Bankside Wharf SE1  
Gross Internal Area:  
58 Sq. m. - 627 Sq.ft.



Whilst every attempt has been made to ensure the accuracy of this floor plan, measurements of doors, windows, rooms, angles and Sq footage are approximate within 5% accuracy. For identification purposes only. Not to be used as part of the decision to buy. You must check all details before purchase and only purchase when you have confirmed them. Price on application for a 90 day licence to use this plan. No appliances tested. Not to scale. © 40/2020. Floorplan, EPC, Virtual Tour and Photography by: www.steels.london with the UK's Number 1 Property Photographer Floorplan... - Email: patricia@steels.london - Tel: 07847 29401



Frank Harris & Co. South Bank and Waterloo  
123 Stamford Street, London,  
SE1 9NN  
020 7590 7100  
[southbanklettings@frankharris.co.uk](mailto:southbanklettings@frankharris.co.uk)

Energy Rating: . We aim to make our particulars both accurate and reliable. However they are not guaranteed; nor do they form part of an offer or contract. If you require clarification on any points then please contact us, especially if you're traveling some distance to view. Please note that appliances and heating systems have not been tested and therefore no warranties can be given as to their good working order.