



Gaumont Place, SW2

£2,550 PCM

A modern two bedroom apartment with full width roof terrace spanning the entire length of the flat. Within one of the most sought after developments in Streatham Hill this property would make the

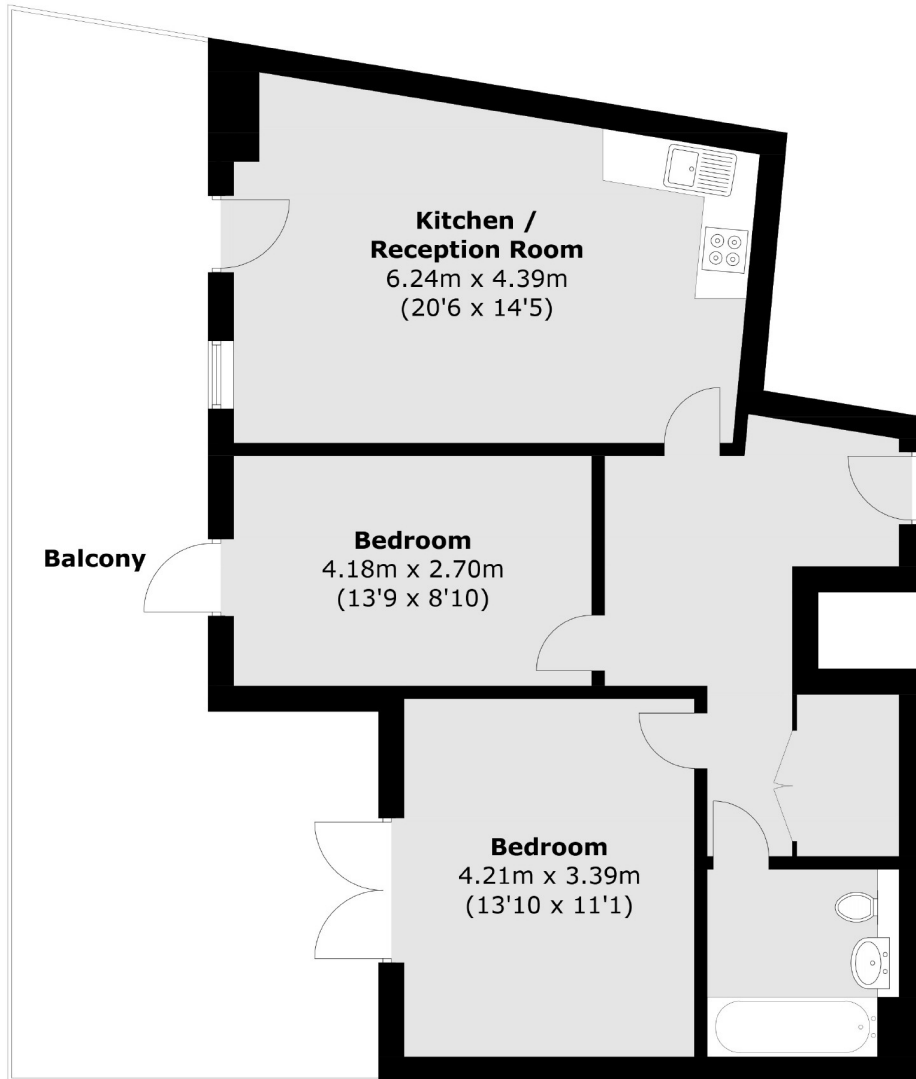
- Two Bedroom Apartment
- Full width Roof Terrace
- Allocated Parking
- Concierge
- Communal Gardens
- Communal Gym

For further information on the costs associated with renting a property, please pop into our office or visit our website.



Gaumont Place is moments from Streatham Hill station with direct trains to London Victoria. Streatham High road, and its array of local bus routes, shops and other amenities are close by.





Total area (approx.): 70.1 sq. m (754.5 sq. ft)
Balcony area: 37.0 sq. m (398.2 sq. ft)

Jacksons Streatham
1-3 De Montfort Parade
Streatham High Road
Streatham
London
SW16 1BU

Energy Rating: We aim to make our particulars both accurate and reliable. However they are not guaranteed; nor do they form part of an offer or contract. If you require clarification on any points then please contact us, especially if you're traveling some distance to view. Please note that appliances and heating systems have not been tested and therefore no warranties can be given as to their good working order.