



Kingswood Road, SW2

£615,000

**Guide Price- £615,000 -£650,000 ** A beautifully presented and chain free split level three double bedroom maisonette, which offers incredibly bright and versatile accommodation which measures 971.8 Sq. Ft/ 90.3 Sq.

- Share of Freehold
- Large Private Garden
- Large Reception Room
- Three Double Bedrooms
- Luxury Kitchen & Bathroom
- Additional En-Suite W.C.



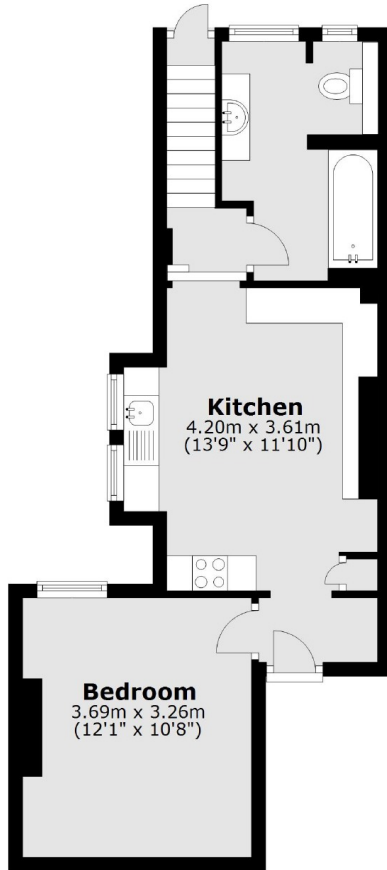
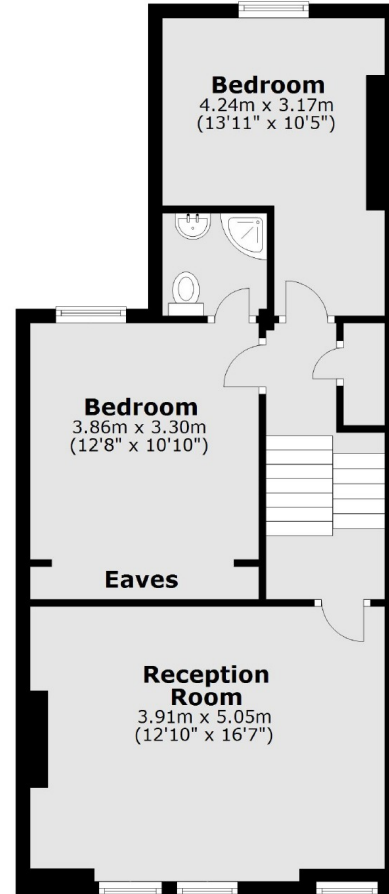
Occupying the whole of the first and second floors this purpose built Edwardian maisonette is available chain free meaning that any incoming buyer can move in very quickly. There are three great size bedrooms all very well proportioned one of which comes with an en-suite. Towards the back there is a large and extensively refurbished kitchen that comes with a good range of fitted units and built in appliances with stairs which lead on to the large private rear garden.



Kingswood Road is close to Kings Avenue and is therefore convenient for Clapham Common, Clapham North and Brixton tube stations. It also provides easy access to Abbeville Village and all the bars and restaurants around Clapham and Brixton.





First Floor**Second Floor**

Total area: approx. 90.3 sq. metres (971.8 sq. feet)

Jacksons Balham
8-11 Balham Station Road
London
SW12 9SG
020 8675 6555
balham.sales@jacksonsestateagents.com

Energy Rating: We aim to make our particulars both accurate and reliable. However they are not guaranteed; nor do they form part of an offer or contract. If you require clarification on any points then please contact us, especially if you're traveling some distance to view. Please note that appliances and heating systems have not been tested and therefore no warranties can be given as to their good working order.