



## Besley Street, SW16

£700,000

A very charming four bedroom home which is in immaculate condition. This property further benefits from being incredibly spacious and has a lovely bright loft conversion.

- Four Bedrooms
- Loft Conversion
- Great Condition
- Newly Refurbished
- Good Connections
- Freehold





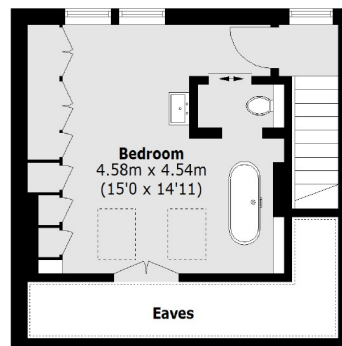
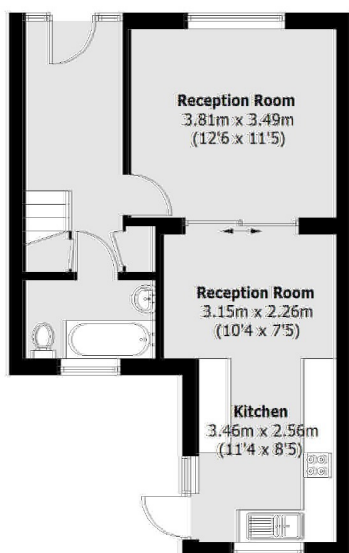
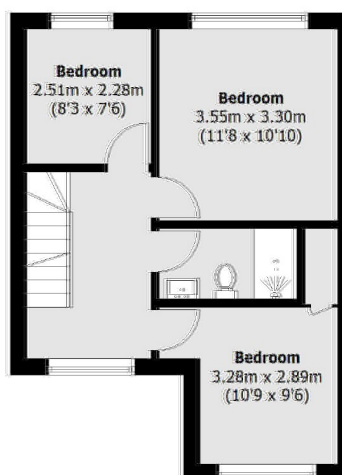
Besley Street is conveniently placed on the borders of Streatham Common and Furzedown with the array of local amenities. Commuters have regular transport links via both Streatham and Streatham Common mainline stations










**Second Floor**

**Ground Floor**

**First Floor**

Total area (approx.): 109.3 sq. m (1,176.4 sq. ft)  
(Excluding Eaves)

Jacksons Streatham  
1-3 De Montfort Parade  
Streatham High Road  
Streatham  
London  
SW16 1BU

Energy Rating: C We aim to make our particulars both accurate and reliable. However they are not guaranteed; nor do they form part of an offer or contract. If you require clarification on any points then please contact us, especially if you're traveling some distance to view. Please note that appliances and heating systems have not been tested and therefore no warranties can be given as to their good working order.